

**SNCG / Gamma-Synuclein Antibody**  
**Rabbit Polyclonal Antibody**  
**Catalog # ALS12582****Specification**

---

**SNCG / Gamma-Synuclein Antibody - Product Information**

Application	IHC
Primary Accession	<a href="#">O76070</a>
Reactivity	Human
Host	Rabbit
Clonality	Polyclonal
Calculated MW	13kDa KDa

**SNCG / Gamma-Synuclein Antibody - Additional Information****Gene ID** 6623**Other Names**

Gamma-synuclein, Breast cancer-specific gene 1 protein, Persyn, Synoretin, SR, SNCG, BCSG1, PERSYN, PRSN

**Target/Specificity**

This antibody is specific for gamma-synuclein and does not cross-react with alpha- and beta-synuclein.

**Reconstitution & Storage**

Long term: -20°C; Short term: +4°C; Avoid freeze-thaw cycles.

**Precautions**

SNCG / Gamma-Synuclein Antibody is for research use only and not for use in diagnostic or therapeutic procedures.

**SNCG / Gamma-Synuclein Antibody - Protein Information****Name** SNCG**Synonyms** BCSG1, PERSYN, PRSN**Function**

Plays a role in neurofilament network integrity. May be involved in modulating axonal architecture during development and in the adult. In vitro, increases the susceptibility of neurofilament-H to calcium-dependent proteases (By similarity). May also function in modulating the keratin network in skin. Activates the MAPK and Elk-1 signal transduction pathway (By similarity).

**Cellular Location**

Cytoplasm, perinuclear region. Cytoplasm, cytoskeleton, microtubule organizing center, centrosome. Cytoplasm, cytoskeleton, spindle. Note=Associated with centrosomes in several interphase cells. In mitotic cells, localized to the poles of the spindle

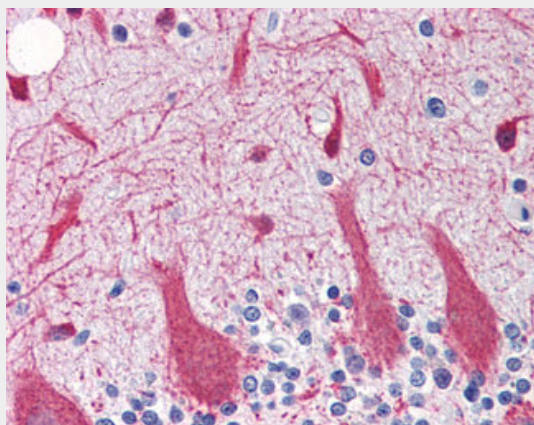
**Tissue Location**

Highly expressed in brain, particularly in the substantia nigra. Also expressed in the corpus callosum, heart, skeletal muscle, ovary, testis, colon and spleen. Weak expression in pancreas, kidney and lung

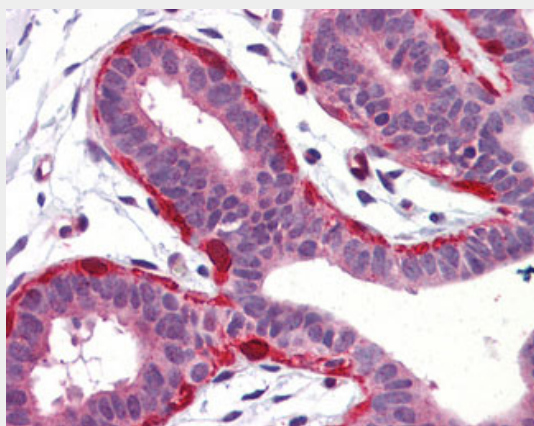
**SNCG / Gamma-Synuclein Antibody - Protocols**

Provided below are standard protocols that you may find useful for product applications.

- [Western Blot](#)
- [Blocking Peptides](#)
- [Dot Blot](#)
- [Immunohistochemistry](#)
- [Immunofluorescence](#)
- [Immunoprecipitation](#)
- [Flow Cytometry](#)
- [Cell Culture](#)

**SNCG / Gamma-Synuclein Antibody - Images**

Anti-SNCG antibody IHC of human brain, cerebellum.



Anti-SNCG antibody IHC of human breast.

**SNCG / Gamma-Synuclein Antibody - Background**

Plays a role in neurofilament network integrity. May be involved in modulating axonal architecture

during development and in the adult. In vitro, increases the susceptibility of neurofilament-H to calcium-dependent proteases (By similarity). May also function in modulating the keratin network in skin. Activates the MAPK and Elk-1 signal transduction pathway (By similarity).

#### **SNCG / Gamma-Synuclein Antibody - References**

Ji H.,et al.Cancer Res. 57:759-764(1997).  
Ninkina N.N.,et al.Hum. Mol. Genet. 7:1417-1424(1998).  
Lavedan C.,et al.Hum. Genet. 103:106-112(1998).  
Han C.,et al.Submitted (AUG-2001) to the EMBL/GenBank/DDBJ databases.  
Pronin A.N.,et al.J. Biol. Chem. 275:26515-26522(2000).