

**CFL1 / Cofilin Antibody (aa1-166, clone AT1C1)**  
**Mouse Monoclonal Antibody**  
**Catalog # ALS12584****Specification**

---

**CFL1 / Cofilin Antibody (aa1-166, clone AT1C1) - Product Information**

Application	IHC, WB
Primary Accession	<a href="#">P23528</a>
Reactivity	Human
Host	Mouse
Clonality	Monoclonal
Calculated MW	19kDa KDa

**CFL1 / Cofilin Antibody (aa1-166, clone AT1C1) - Additional Information****Gene ID** 1072**Other Names**

Cofilin-1, 18 kDa phosphoprotein, p18, Cofilin, non-muscle isoform, CFL1, CFL

**Reconstitution & Storage**

Short term 4°C, long term aliquot and store at -20°C, avoid freeze thaw cycles.

**Precautions**

CFL1 / Cofilin Antibody (aa1-166, clone AT1C1) is for research use only and not for use in diagnostic or therapeutic procedures.

**CFL1 / Cofilin Antibody (aa1-166, clone AT1C1) - Protein Information****Name** CFL1**Synonyms** CFL**Function**

Binds to F-actin and exhibits pH-sensitive F-actin depolymerizing activity (PubMed:<a href="http://www.uniprot.org/citations/11812157" target="\_blank">11812157</a>). In conjunction with the subcortical maternal complex (SCMC), plays an essential role for zygotes to progress beyond the first embryonic cell divisions via regulation of actin dynamics (PubMed:<a href="http://www.uniprot.org/citations/15580268" target="\_blank">15580268</a>). Required for the centralization of the mitotic spindle and symmetric division of zygotes (By similarity). Plays a role in the regulation of cell morphology and cytoskeletal organization in epithelial cells (PubMed:<a href="http://www.uniprot.org/citations/21834987" target="\_blank">21834987</a>). Required for the up-regulation of atypical chemokine receptor ACKR2 from endosomal compartment to cell membrane, increasing its efficiency in chemokine uptake and degradation (PubMed:<a href="http://www.uniprot.org/citations/23633677" target="\_blank">23633677</a>). Required for neural tube morphogenesis and neural crest cell migration (By similarity).

**Cellular Location**

Nucleus matrix. Cytoplasm, cytoskeleton. Cell projection, ruffle membrane; Peripheral membrane protein; Cytoplasmic side. Cell projection, lamellipodium membrane; Peripheral membrane protein; Cytoplasmic side. Cell projection, lamellipodium {ECO:0000250|UniProtKB:P18760}. Cell projection, growth cone {ECO:0000250|UniProtKB:P18760}. Cell projection, axon {ECO:0000250|UniProtKB:P18760}. Note=Colocalizes with the actin cytoskeleton in membrane ruffles and lamellipodia. Detected at the cleavage furrow and contractile ring during cytokinesis. Almost completely in nucleus in cells exposed to heat shock or 10% dimethyl sulfoxide

**Tissue Location**

Widely distributed in various tissues.

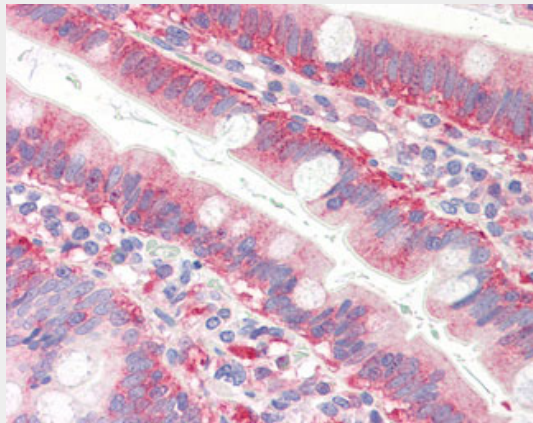
**Volume**

50 µl

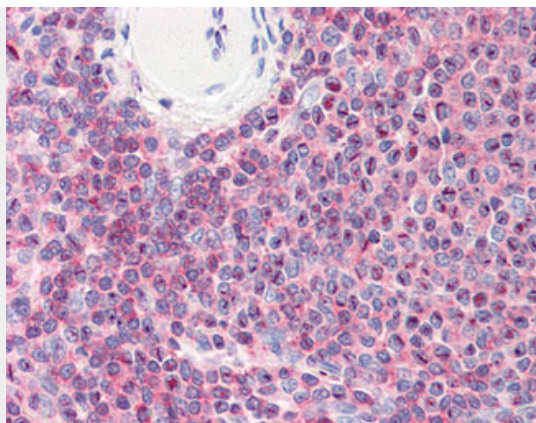
**CFL1 / Cofilin Antibody (aa1-166, clone AT1C1) - Protocols**

Provided below are standard protocols that you may find useful for product applications.

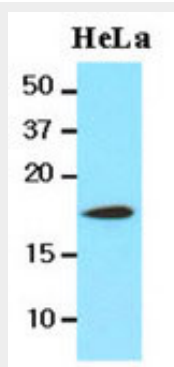
- [Western Blot](#)
- [Blocking Peptides](#)
- [Dot Blot](#)
- [Immunohistochemistry](#)
- [Immunofluorescence](#)
- [Immunoprecipitation](#)
- [Flow Cytometry](#)
- [Cell Culture](#)

**CFL1 / Cofilin Antibody (aa1-166, clone AT1C1) - Images**

Anti-CFL1 / Cofilin antibody IHC of human small intestine.



Anti-CFL1 / Cofilin antibody IHC of human spleen.



The lysates of HeLa(20 ug) were resolved by SDS-PAGE, transferred to NC membrane and probed with...

#### **CFL1 / Cofilin Antibody (aa1-166, clone AT1C1) - Background**

Binds to F-actin and exhibits pH-sensitive F-actin depolymerizing activity. Regulates actin cytoskeleton dynamics. Important for normal progress through mitosis and normal cytokinesis. Plays a role in the regulation of cell morphology and cytoskeletal organization. Required for the up-regulation of atypical chemokine receptor ACKR2 from endosomal compartment to cell membrane, increasing its efficiency in chemokine uptake and degradation.

#### **CFL1 / Cofilin Antibody (aa1-166, clone AT1C1) - References**

Ogawa K.,et al.Nucleic Acids Res. 18:7169-7169(1990).  
van der Steege G.,et al.Eur. J. Hum. Genet. 3:87-95(1995).  
Gillett G.T.,et al.Ann. Hum. Genet. 60:201-211(1996).  
Kalnine N.,et al.Submitted (MAY-2003) to the EMBL/GenBank/DDBJ databases.  
Ota T.,et al.Nat. Genet. 36:40-45(2004).