

**CENPF / CENP-F Antibody (C-Terminus)**  
**Goat Polyclonal Antibody**  
**Catalog # ALS12596****Specification**

---

**CENPF / CENP-F Antibody (C-Terminus) - Product Information**

Application	IHC
Primary Accession	<a href="#">P49454</a>
Reactivity	Human
Host	Goat
Clonality	Polyclonal
Calculated MW	368kDa KDa

**CENPF / CENP-F Antibody (C-Terminus) - Additional Information****Gene ID** 1063**Other Names**

Centromere protein F, CENP-F, AH antigen, Kinetochore protein CENPF, Mitosin, CENPF

**Target/Specificity**

Human CENPF. The immunizing peptide shows one mismatch with the corresponding sequence of the NCBI-curated isoform NP\_057427.3.

**Reconstitution & Storage**

Store at -20°C. Minimize freezing and thawing.

**Precautions**

CENPF / CENP-F Antibody (C-Terminus) is for research use only and not for use in diagnostic or therapeutic procedures.

**CENPF / CENP-F Antibody (C-Terminus) - Protein Information****Name** CENPF**Function**

Required for kinetochore function and chromosome segregation in mitosis. Required for kinetochore localization of dynein, LIS1, NDE1 and NDEL1. Regulates recycling of the plasma membrane by acting as a link between recycling vesicles and the microtubule network through its association with STX4 and SNAP25. Acts as a potential inhibitor of pocket protein-mediated cellular processes during development by regulating the activity of RB proteins during cell division and proliferation. May play a regulatory or permissive role in the normal embryonic cardiomyocyte cell cycle and in promoting continued mitosis in transformed, abnormally dividing neonatal cardiomyocytes. Interaction with RB directs embryonic stem cells toward a cardiac lineage. Involved in the regulation of DNA synthesis and hence cell cycle progression, via its C-terminus. Has a potential role regulating skeletal myogenesis and in cell differentiation in embryogenesis. Involved in dendritic cell regulation of T-cell immunity against chlamydia.

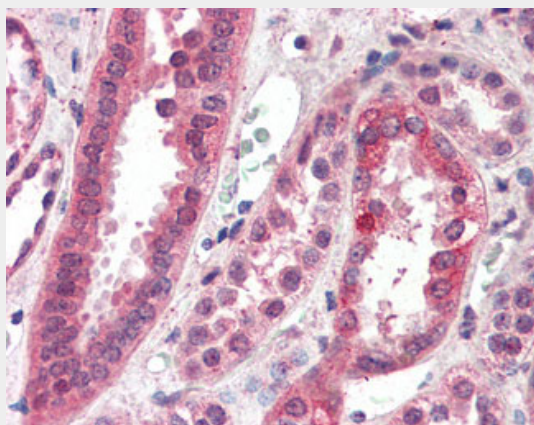
**Cellular Location**

Cytoplasm, perinuclear region. Nucleus matrix. Chromosome, centromere, kinetochore. Cytoplasm, cytoskeleton, spindle Note=Relocalizes to the kinetochore/centromere (coronal surface of the outer plate) and the spindle during mitosis. Observed in nucleus during interphase but not in the nucleolus. At metaphase becomes localized to areas including kinetochore and mitotic apparatus as well as cytoplasm By telophase, is concentrated within the intracellular bridge at either side of the mid-body

**CENPF / CENP-F Antibody (C-Terminus) - Protocols**

Provided below are standard protocols that you may find useful for product applications.

- [Western Blot](#)
- [Blocking Peptides](#)
- [Dot Blot](#)
- [Immunohistochemistry](#)
- [Immunofluorescence](#)
- [Immunoprecipitation](#)
- [Flow Cytometry](#)
- [Cell Culture](#)

**CENPF / CENP-F Antibody (C-Terminus) - Images**

Anti-CENPF antibody IHC of human kidney.

**CENPF / CENP-F Antibody (C-Terminus) - Background**

Required for kinetochore function and chromosome segregation in mitosis. Required for kinetochore localization of dynein, LIS1, NDE1 and NDEL1. Regulates recycling of the plasma membrane by acting as a link between recycling vesicles and the microtubule network through its association with STX4 and SNAP25. Acts as a potential inhibitor of pocket protein-mediated cellular processes during development by regulating the activity of RB proteins during cell division and proliferation. May play a regulatory or permissive role in the normal embryonic cardiomyocyte cell cycle and in promoting continued mitosis in transformed, abnormally dividing neonatal cardiomyocytes. Interaction with RB directs embryonic stem cells toward a cardiac lineage. Involved in the regulation of DNA synthesis and hence cell cycle progression, via its C-terminus. Has a potential role regulating skeletal myogenesis and in cell differentiation in embryogenesis. Involved in dendritic cell regulation of T-cell immunity against chlamydia.

**CENPF / CENP-F Antibody (C-Terminus) - References**

Liao H.,et al.J. Cell Biol. 130:507-518(1995).  
Zhu X.,et al.Mol. Cell. Biol. 15:5017-5029(1995).  
Gregory S.G.,et al.Nature 441:315-321(2006).  
Li Q.,et al.Biochem. Biophys. Res. Commun. 212:220-228(1995).  
Zhu X.,et al.J. Biol. Chem. 270:19545-19550(1995).