

**Ferritin Heavy Chain / FTH1 Antibody (C-Terminus)**  
**Goat Polyclonal Antibody**  
**Catalog # ALS12621****Specification**

---

**Ferritin Heavy Chain / FTH1 Antibody (C-Terminus) - Product Information**

Application	IHC
Primary Accession	<a href="#">P02794</a>
Reactivity	Human, Monkey
Host	Goat
Clonality	Polyclonal
Calculated MW	21kDa KDa

**Ferritin Heavy Chain / FTH1 Antibody (C-Terminus) - Additional Information****Gene ID** 2495**Other Names**

Ferritin heavy chain, Ferritin H subunit, 1.16.3.1, Cell proliferation-inducing gene 15 protein, Ferritin heavy chain, N-terminally processed, FTH1, FTH, FTHL6

**Target/Specificity**

Human FTH1.

**Reconstitution & Storage**

Store at -20°C. Minimize freezing and thawing.

**Precautions**

Ferritin Heavy Chain / FTH1 Antibody (C-Terminus) is for research use only and not for use in diagnostic or therapeutic procedures.

**Ferritin Heavy Chain / FTH1 Antibody (C-Terminus) - Protein Information****Name** FTH1**Synonyms** FTH, FTHL6**Function**

Stores iron in a soluble, non-toxic, readily available form. Important for iron homeostasis. Has ferroxidase activity (PubMed:<a href="http://www.uniprot.org/citations/9003196" target="\_blank">9003196</a>). Iron is taken up in the ferrous form and deposited as ferric hydroxides after oxidation (PubMed:<a href="http://www.uniprot.org/citations/9003196" target="\_blank">9003196</a>). Also plays a role in delivery of iron to cells (By similarity). Mediates iron uptake in capsule cells of the developing kidney (By similarity).

**Cellular Location**

Cytoplasm {ECO:0000250|UniProtKB:P19130}.

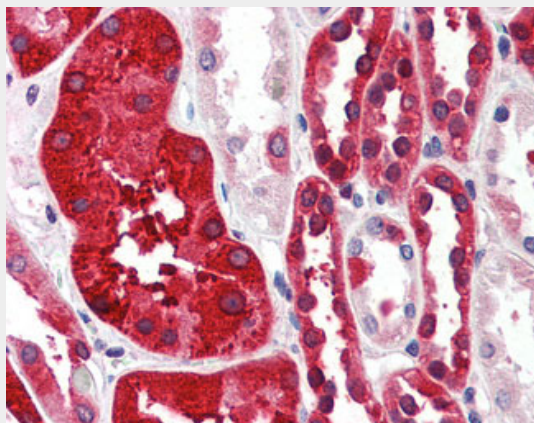
**Tissue Location**

Expressed in the liver.

**Ferritin Heavy Chain / FTH1 Antibody (C-Terminus) - Protocols**

Provided below are standard protocols that you may find useful for product applications.

- [Western Blot](#)
- [Blocking Peptides](#)
- [Dot Blot](#)
- [Immunohistochemistry](#)
- [Immunofluorescence](#)
- [Immunoprecipitation](#)
- [Flow Cytometry](#)
- [Cell Culture](#)

**Ferritin Heavy Chain / FTH1 Antibody (C-Terminus) - Images**

Anti-FTH1 antibody IHC of human kidney.

**Ferritin Heavy Chain / FTH1 Antibody (C-Terminus) - Background**

Stores iron in a soluble, non-toxic, readily available form. Important for iron homeostasis. Has ferroxidase activity. Iron is taken up in the ferrous form and deposited as ferric hydroxides after oxidation. Also plays a role in delivery of iron to cells. Mediates iron uptake in capsule cells of the developing kidney (By similarity).

**Ferritin Heavy Chain / FTH1 Antibody (C-Terminus) - References**

- Costanzo F., et al. EMBO J. 3:23-27(1984).  
Boyd D., et al. J. Biol. Chem. 260:11755-11761(1985).  
Chou C.-C., et al. Mol. Cell. Biol. 6:566-573(1986).  
Costanzo F., et al. Nucleic Acids Res. 14:721-736(1986).  
Hentze M.W., et al. Proc. Natl. Acad. Sci. U.S.A. 83:7226-7230(1986).