

CRLF2 / TSLPR Antibody (Internal)
Rabbit Polyclonal Antibody
Catalog # ALS12690**Specification**

CRLF2 / TSLPR Antibody (Internal) - Product Information

Application	IF, IHC, WB
Primary Accession	O9HC73
Reactivity	Human
Host	Rabbit
Clonality	Polyclonal
Calculated MW	42kDa KDa

CRLF2 / TSLPR Antibody (Internal) - Additional Information**Gene ID** 64109**Other Names**

Cytokine receptor-like factor 2, Cytokine receptor-like 2, IL-XR, Thymic stromal lymphopoietin protein receptor, TSLP receptor, CRLF2, CRL2, ILXR, TSLPR

Target/Specificity

a 19 amino acid peptide from near the center of human TSLP-R

Reconstitution & Storage

Short term 4°C, long term aliquot and store at -20°C, avoid freeze thaw cycles. Store undiluted.

Precautions

CRLF2 / TSLPR Antibody (Internal) is for research use only and not for use in diagnostic or therapeutic procedures.

CRLF2 / TSLPR Antibody (Internal) - Protein Information**Name** CRLF2**Synonyms** CRL2, ILXR, TSLPR**Function**

Receptor for thymic stromal lymphopoietin (TSLP). Forms a functional complex with TSLP and IL7R which is capable of stimulating cell proliferation through activation of STAT3 and STAT5. Also activates JAK2 (By similarity). Implicated in the development of the hematopoietic system.

Cellular Location

[Isoform 1]: Cell membrane; Single-pass type I membrane protein

Tissue Location

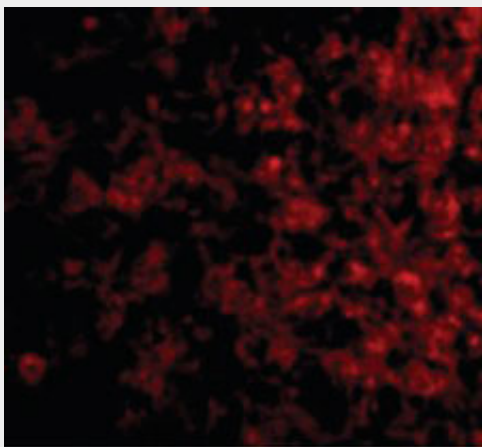
Expressed in heart, skeletal muscle, kidney and adult and fetal liver. Primarily expressed in dendrites and monocytes Weakly expressed in T-cells

CRLF2 / TSLPR Antibody (Internal) - Protocols

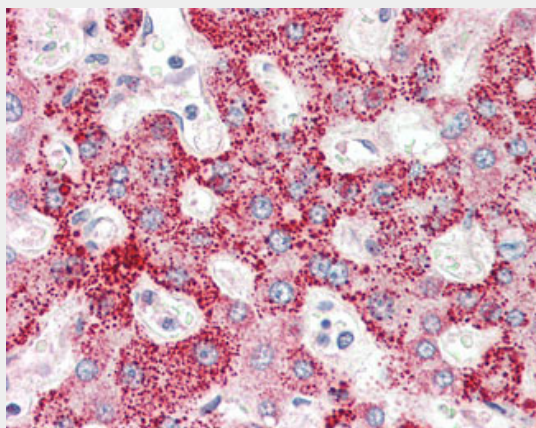
Provided below are standard protocols that you may find useful for product applications.

- [Western Blot](#)
- [Blocking Peptides](#)
- [Dot Blot](#)
- [Immunohistochemistry](#)
- [Immunofluorescence](#)
- [Immunoprecipitation](#)
- [Flow Cytometry](#)
- [Cell Culture](#)

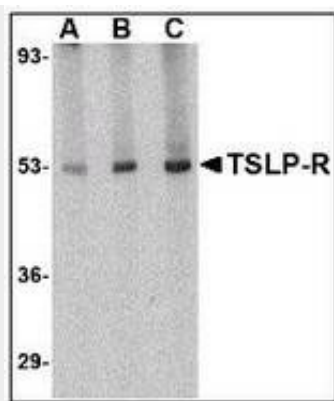
CRLF2 / TSLPR Antibody (Internal) - Images



Immunofluorescence of TSLP Receptor in Human Liver cells with TSLP Receptor antibody at 20 ug/ml.



Anti-CRLF2 antibody IHC of human liver.



Western blot of TSLP Receptor in human liver tissue lysate with ALS12690 at (A) 0.5, (B) 1 and...

CRLF2 / TSLPR Antibody (Internal) - Background

Receptor for thymic stromal lymphopoietin (TSLP). Forms a functional complex with TSLP and IL7R which is capable of stimulating cell proliferation through activation of STAT3 and STAT5. Also activates JAK2 (By similarity). Implicated in the development of the hematopoietic system.

CRLF2 / TSLPR Antibody (Internal) - References

Zhang W.,et al.Biochem. Biophys. Res. Commun. 281:878-883(2001).
Tonozyuka Y.,et al.Cytogenet. Cell Genet. 93:23-25(2001).
Reche P.A.,et al.J. Immunol. 167:336-343(2001).
Li T.,et al.Submitted (OCT-2004) to the EMBL/GenBank/DDBJ databases.
Ota T.,et al.Nat. Genet. 36:40-45(2004).