

TOCA1 / FBNP1L Antibody (C-Terminus)
Rabbit Polyclonal Antibody
Catalog # ALS12693**Specification**

TOCA1 / FBNP1L Antibody (C-Terminus) - Product Information

Application	WB, IF, IHC
Primary Accession	Q5T0N5
Reactivity	Human, Mouse, Rat
Host	Rabbit
Clonality	Polyclonal
Calculated MW	70kDa KDa

TOCA1 / FBNP1L Antibody (C-Terminus) - Additional Information**Gene ID** 54874**Other Names**

Formin-binding protein 1-like, Transducer of Cdc42-dependent actin assembly protein 1, Toca-1, FBNP1L, C1orf39, TOCA1

Reconstitution & Storage

Short term 4°C, long term aliquot and store at -20°C, avoid freeze thaw cycles. Store undiluted.

Precautions

TOCA1 / FBNP1L Antibody (C-Terminus) is for research use only and not for use in diagnostic or therapeutic procedures.

TOCA1 / FBNP1L Antibody (C-Terminus) - Protein Information**Name** FBNP1L**Synonyms** C1orf39, TOCA1**Function**

Required to coordinate membrane tubulation with reorganization of the actin cytoskeleton during endocytosis. May bind to lipids such as phosphatidylinositol 4,5-bisphosphate and phosphatidylserine and promote membrane invagination and the formation of tubules. Also promotes CDC42-induced actin polymerization by activating the WASL/N-WASP-WASPIP/WIP complex, the predominant form of WASL/N-WASP in cells. Actin polymerization may promote the fission of membrane tubules to form endocytic vesicles. Essential for autophagy of intracellular bacterial pathogens.

Cellular Location

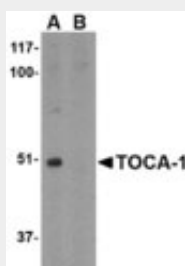
Cytoplasm. Cytoplasm, cytoskeleton. Cytoplasm, cell cortex. Cytoplasmic vesicle. Cell membrane; Peripheral membrane protein; Cytoplasmic side

TOCA1 / FBNP1L Antibody (C-Terminus) - Protocols

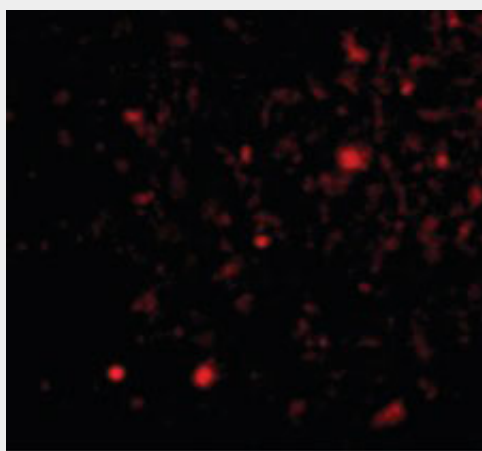
Provided below are standard protocols that you may find useful for product applications.

- [Western Blot](#)
- [Blocking Peptides](#)
- [Dot Blot](#)
- [Immunohistochemistry](#)
- [Immunofluorescence](#)
- [Immunoprecipitation](#)
- [Flow Cytometry](#)
- [Cell Culture](#)

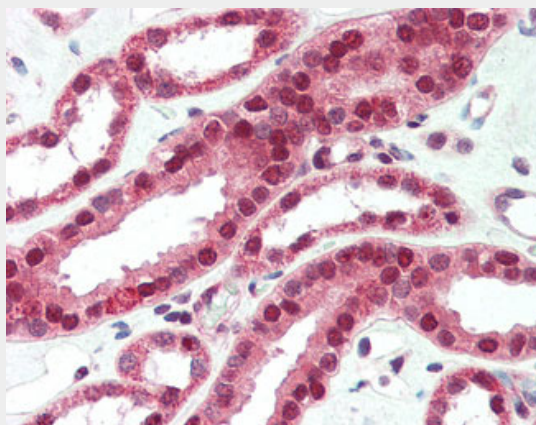
TOCA1 / FBNP1L Antibody (C-Terminus) - Images



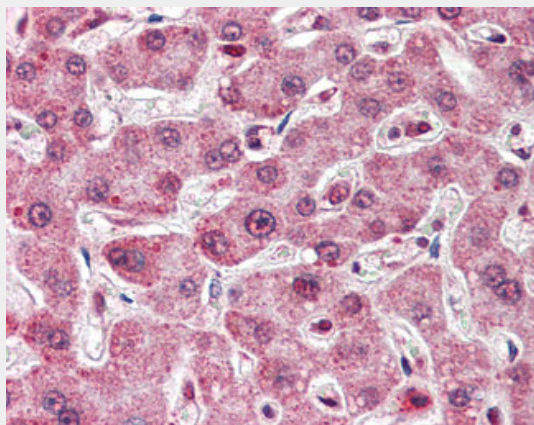
Western blot of TOCA-1 in mouse brain tissue lysate with in (A) the absence and (B) the presence...



Immunofluorescence of TOCA-1 in Human Brain cells with TOCA-1 antibody at 20 ug/ml.



Anti-FNBP1L / Toca-1 antibody IHC of human kidney.



Anti-FNBP1L / Toca-1 antibody IHC of human liver.

TOCA1 / FNBP1L Antibody (C-Terminus) - Background

Required to coordinate membrane tubulation with reorganization of the actin cytoskeleton during endocytosis. May bind to lipids such as phosphatidylinositol 4,5-bisphosphate and phosphatidylserine and promote membrane invagination and the formation of tubules. Also promotes CDC42-induced actin polymerization by activating the WASL/N-WASP-WASPIP/WIP complex, the predominant form of WASL/N-WASP in cells. Actin polymerization may promote the fission of membrane tubules to form endocytic vesicles. Essential for autophagy of intracellular bacterial pathogens.

TOCA1 / FNBP1L Antibody (C-Terminus) - References

Ho H.-Y.H.,et al.Cell 118:203-216(2004).
Gregory S.G.,et al.Nature 441:315-321(2006).
Ota T.,et al.Nat. Genet. 36:40-45(2004).
Itoh T.,et al.Dev. Cell 9:791-804(2005).
Aspenstroem P.,et al.Exp. Cell Res. 312:2180-2194(2006).