

SLITRK6 Antibody (Internal)
Rabbit Polyclonal Antibody
Catalog # ALS12699**Specification**

SLITRK6 Antibody (Internal) - Product Information

Application	IF
Primary Accession	Q9H5Y7
Reactivity	Human, Mouse, Rat
Host	Rabbit
Clonality	Polyclonal
Calculated MW	95kDa KDa

SLITRK6 Antibody (Internal) - Additional Information**Gene ID** 84189**Other Names**

SLIT and NTRK-like protein 6, SLITRK6

Reconstitution & Storage

Short term 4°C, long term aliquot and store at -20°C, avoid freeze thaw cycles. Store undiluted.

Precautions

SLITRK6 Antibody (Internal) is for research use only and not for use in diagnostic or therapeutic procedures.

SLITRK6 Antibody (Internal) - Protein Information**Name** SLITRK6**Function**

Regulator of neurite outgrowth required for normal hearing and vision.

Cellular Location

Cell membrane; Single-pass type I membrane protein

Tissue Location

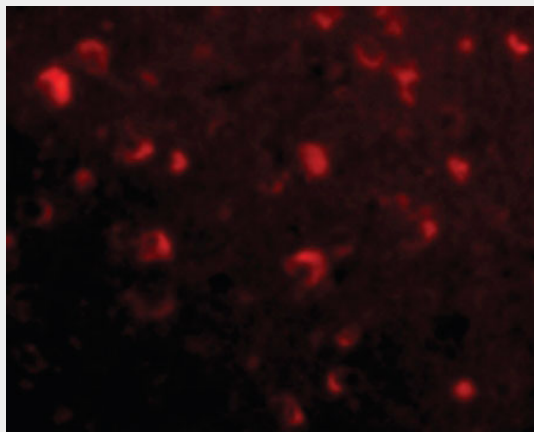
In adult brain, highly expressed in putamen with no expression in cerebral cortex. Expressed in adult and fetal lung and fetal liver. Also expressed at high levels in some brain tumors including medulloblastomas and primitive neuroectodermal tumors

SLITRK6 Antibody (Internal) - Protocols

Provided below are standard protocols that you may find useful for product applications.

- [Western Blot](#)
- [Blocking Peptides](#)
- [Dot Blot](#)
- [Immunohistochemistry](#)
- [Immunofluorescence](#)
- [Immunoprecipitation](#)
- [Flow Cytometry](#)
- [Cell Culture](#)

SLITRK6 Antibody (Internal) - Images



Immunofluorescence of Slitrk6 in Human Brain cells with Slitrk6 antibody at 20 ug/ml.

SLITRK6 Antibody (Internal) - Background

Regulator of neurite outgrowth required for normal hearing and vision.

SLITRK6 Antibody (Internal) - References

Ota T.,et al.Nat. Genet. 36:40-45(2004).
Bechtel S.,et al.BMC Genomics 8:399-399(2007).
Dunham A.,et al.Nature 428:522-528(2004).
Mural R.J.,et al.Submitted (JUL-2005) to the EMBL/GenBank/DDBJ databases.
Aruga J.,et al.Gene 315:87-94(2003).