

PEBP1 / RKIP Antibody (C-Terminus)
Goat Polyclonal Antibody
Catalog # ALS12707**Specification**

PEBP1 / RKIP Antibody (C-Terminus) - Product Information

Application	WB, IHC
Primary Accession	P30086
Reactivity	Human, Mouse, Hamster, Monkey, Pig, Chicken, Horse, Bovine
Host	Goat
Clonality	Polyclonal
Calculated MW	21kDa KDa

PEBP1 / RKIP Antibody (C-Terminus) - Additional Information**Gene ID** 5037**Other Names**

Phosphatidylethanolamine-binding protein 1, PEBP-1, HCNPpp, Neuropolypeptide h3, Prostatic-binding protein, Raf kinase inhibitor protein, RKIP, Hippocampal cholinergic neurostimulating peptide, HCNP, PEBP1, PBP, PEBP

Target/Specificity

Human PEBP1.

Reconstitution & Storage

Store at -20°C. Minimize freezing and thawing.

Precautions

PEBP1 / RKIP Antibody (C-Terminus) is for research use only and not for use in diagnostic or therapeutic procedures.

PEBP1 / RKIP Antibody (C-Terminus) - Protein Information**Name** PEBP1**Synonyms** PBP, PEBP**Function**

Binds ATP, opioids and phosphatidylethanolamine. Has lower affinity for phosphatidylinositol and phosphatidylcholine. Serine protease inhibitor which inhibits thrombin, neuropsin and chymotrypsin but not trypsin, tissue type plasminogen activator and elastase (By similarity). Inhibits the kinase activity of RAF1 by inhibiting its activation and by dissociating the RAF1/MEK complex and acting as a competitive inhibitor of MEK phosphorylation.

Cellular Location

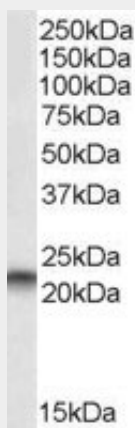
Cytoplasm.

PEBP1 / RKIP Antibody (C-Terminus) - Protocols

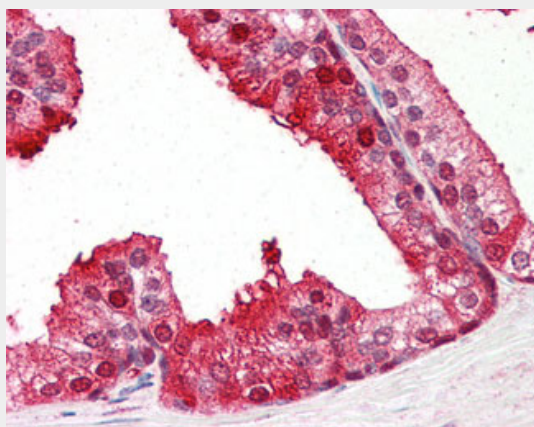
Provided below are standard protocols that you may find useful for product applications.

- [Western Blot](#)
- [Blocking Peptides](#)
- [Dot Blot](#)
- [Immunohistochemistry](#)
- [Immunofluorescence](#)
- [Immunoprecipitation](#)
- [Flow Cytometry](#)
- [Cell Culture](#)

PEBP1 / RKIP Antibody (C-Terminus) - Images



Antibody staining (0.01 ug/ml) of A549 lysate (RIPA buffer, 35 ug total protein per lane).



Anti-PEBP1 antibody IHC of human prostate.

PEBP1 / RKIP Antibody (C-Terminus) - Background

Binds ATP, opioids and phosphatidylethanolamine. Has lower affinity for phosphatidylinositol and phosphatidylcholine. Serine protease inhibitor which inhibits thrombin, neuropsin and chymotrypsin but not trypsin, tissue type plasminogen activator and elastase (By similarity). Inhibits the kinase activity of RAF1 by inhibiting its activation and by dissociating the RAF1/MEK complex and acting as a competitive inhibitor of MEK phosphorylation.

PEBP1 / RKIP Antibody (C-Terminus) - References

- Hori N.,et al.Gene 140:293-294(1994).
Tohdoh N.,et al.Brain Res. Mol. Brain Res. 30:381-384(1995).
Hall L.,et al.Submitted (FEB-1995) to the EMBL/GenBank/DDBJ databases.
Ota T.,et al.Nat. Genet. 36:40-45(2004).
Mural R.J.,et al.Submitted (JUL-2005) to the EMBL/GenBank/DDBJ databases.