

SCG10 / STMN2 Antibody
Goat Polyclonal Antibody
Catalog # ALS12745**Specification**

SCG10 / STMN2 Antibody - Product Information

Application	WB, IHC-P, E
Primary Accession	Q93045
Reactivity	Human, Mouse, Rat, Rabbit, Hamster, Monkey, Chicken, Horse, Bovine, Dog
Host	Goat
Clonality	Polyclonal
Calculated MW	21kDa KDa
Dilution	WB~~1:1000 IHC-P~~N/A E~~N/A

SCG10 / STMN2 Antibody - Additional Information**Gene ID** 11075**Other Names**

Stathmin-2, Superior cervical ganglion-10 protein, Protein SCG10, STMN2, SCG10, SCGN10

Target/Specificity

Human STMN2.

Reconstitution & Storage

Short term 4°C, long term aliquot and store at -20°C, avoid freeze thaw cycles.

Precautions

SCG10 / STMN2 Antibody is for research use only and not for use in diagnostic or therapeutic procedures.

SCG10 / STMN2 Antibody - Protein Information**Name** STMN2**Synonyms** SCG10, SCGN10**Function**

Regulator of microtubule stability. When phosphorylated by MAPK8, stabilizes microtubules and consequently controls neurite length in cortical neurons. In the developing brain, negatively regulates the rate of exit from multipolar stage and retards radial migration from the ventricular zone (By similarity).

Cellular Location

Cytoplasm. Cytoplasm, perinuclear region. Cell projection, growth cone. Membrane; Peripheral

membrane protein; Cytoplasmic side. Cell projection, axon. Golgi apparatus. Endosome. Cell projection, lamellipodium. Note=Associated with punctate structures in the perinuclear cytoplasm, axons, and growth cones of developing neurons. SCG10 exists in both soluble and membrane-bound forms. Colocalized with CIB1 in neurites of developing hippocampal primary neurons (By similarity). Colocalized with CIB1 in the cell body, neuritis and growth cones of neurons. Colocalized with CIB1 to the leading edge of lamellipodia.

Tissue Location

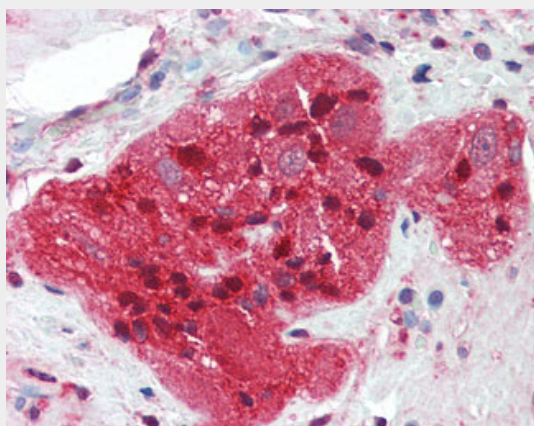
Neuron specific.

SCG10 / STMN2 Antibody - Protocols

Provided below are standard protocols that you may find useful for product applications.

- [Western Blot](#)
- [Blocking Peptides](#)
- [Dot Blot](#)
- [Immunohistochemistry](#)
- [Immunofluorescence](#)
- [Immunoprecipitation](#)
- [Flow Cytometry](#)
- [Cell Culture](#)

SCG10 / STMN2 Antibody - Images



Anti-STMN2 antibody IHC of human small intestine, myenteric plexus.

SCG10 / STMN2 Antibody - Background

Regulator of microtubule stability. When phosphorylated by MAPK8, stabilizes microtubules and consequently controls neurite length in cortical neurons. In the developing brain, negatively regulates the rate of exit from multipolar stage and retards radial migration from the ventricular zone (By similarity).

SCG10 / STMN2 Antibody - References

Okazaki T.,et al.Neurobiol. Aging 16:883-894(1995).
Fujiwara T.,et al.Submitted (APR-1995) to the EMBL/GenBank/DDBJ databases.
Kalnine N.,et al.Submitted (MAY-2003) to the EMBL/GenBank/DDBJ databases.
Ebert L.,et al.Submitted (JUN-2004) to the EMBL/GenBank/DDBJ databases.
Ota T.,et al.Nat. Genet. 36:40-45(2004).

