

**TUBB / Beta Tubulin Antibody**  
**Mouse Monoclonal Antibody**  
**Catalog # ALS12825****Specification**

---

**TUBB / Beta Tubulin Antibody - Product Information**

Application	WB, IHC-P, IF
Primary Accession	<a href="#">P07437</a>
Reactivity	Human, Mouse, Rat, Rabbit, Chicken, Bovine
Host	Mouse
Clonality	Monoclonal
Calculated MW	50kDa KDa
Dilution	WB~~1:1000 IHC-P~~N/A IF~~1:50~200

**TUBB / Beta Tubulin Antibody - Additional Information**

**Gene ID** 203068

**Other Names**

Tubulin beta chain, Tubulin beta-5 chain, TUBB, TUBB5

**Target/Specificity**

Recognizes human Tubulin, beta. Species cross-reactivity: Bovine, rabbit, mouse, chicken, rat, frog, moth and wheat.

**Reconstitution & Storage**

Long term: -20°C; Short term: +4°C. Avoid repeat freeze-thaw cycles.

**Precautions**

TUBB / Beta Tubulin Antibody is for research use only and not for use in diagnostic or therapeutic procedures.

**TUBB / Beta Tubulin Antibody - Protein Information**

**Name** TUBB

**Synonyms** TUBB5

**Function**

Tubulin is the major constituent of microtubules, a cylinder consisting of laterally associated linear protofilaments composed of alpha- and beta-tubulin heterodimers. Microtubules grow by the addition of GTP-tubulin dimers to the microtubule end, where a stabilizing cap forms. Below the cap, tubulin dimers are in GDP-bound state, owing to GTPase activity of alpha-tubulin.

**Cellular Location**

Cytoplasm, cytoskeleton

#### **Tissue Location**

Ubiquitously expressed with highest levels in spleen, thymus and immature brain.

#### **Volume**

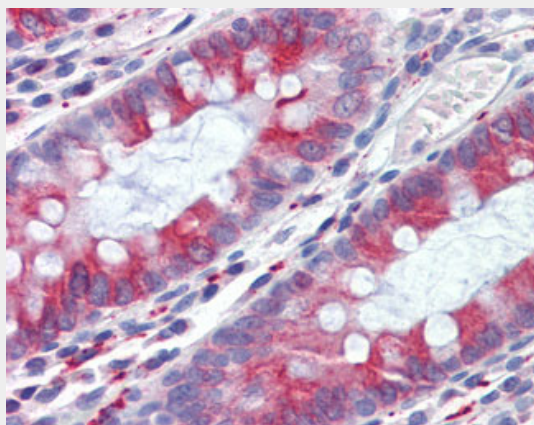
50  $\mu$ l

#### **TUBB / Beta Tubulin Antibody - Protocols**

Provided below are standard protocols that you may find useful for product applications.

- [Western Blot](#)
- [Blocking Peptides](#)
- [Dot Blot](#)
- [Immunohistochemistry](#)
- [Immunofluorescence](#)
- [Immunoprecipitation](#)
- [Flow Cytometry](#)
- [Cell Culture](#)

#### **TUBB / Beta Tubulin Antibody - Images**



Anti-TUBB / Tubulin, Beta antibody IHC of human colon.

#### **TUBB / Beta Tubulin Antibody - Background**

Tubulin is the major constituent of microtubules. It binds two moles of GTP, one at an exchangeable site on the beta chain and one at a non-exchangeable site on the alpha chain.

#### **TUBB / Beta Tubulin Antibody - References**

- Lee M.G.-S., et al. Cell 33:477-487(1983).  
Hall J.L., et al. Mol. Cell. Biol. 3:854-862(1983).  
Crabtree D.V., et al. Bioorg. Med. Chem. 9:1967-1976(2001).  
Yu W., et al. Submitted (JUN-1998) to the EMBL/GenBank/DDBJ databases.  
Shiina S., et al. Submitted (SEP-1999) to the EMBL/GenBank/DDBJ databases.