

**MYL2 Antibody (clone AT3B2)**  
**Mouse Monoclonal Antibody**  
**Catalog # ALS12845****Specification**

---

**MYL2 Antibody (clone AT3B2) - Product Information**

Application	IHC, WB
Primary Accession	<a href="#">P10916</a>
Reactivity	Human, Mouse, Rat
Host	Mouse
Clonality	Monoclonal
Calculated MW	19kDa KDa

**MYL2 Antibody (clone AT3B2) - Additional Information****Gene ID** 4633**Other Names**

Myosin regulatory light chain 2, ventricular/cardiac muscle isoform, MLC-2, MLC-2v, MYL2

**Target/Specificity**

human MYL2 (1-166aa)

**Reconstitution & Storage**

Aliquot and store at -20°C. Minimize freezing and thawing.

**Precautions**

MYL2 Antibody (clone AT3B2) is for research use only and not for use in diagnostic or therapeutic procedures.

**MYL2 Antibody (clone AT3B2) - Protein Information****Name** MYL2 ([HGNC:7583](#))**Function**

Contractile protein that plays a role in heart development and function (PubMed:<a href="http://www.uniprot.org/citations/23365102" target="\_blank">23365102</a>, PubMed:<a href="http://www.uniprot.org/citations/32453731" target="\_blank">32453731</a>). Following phosphorylation, plays a role in cross-bridge cycling kinetics and cardiac muscle contraction by increasing myosin lever arm stiffness and promoting myosin head diffusion; as a consequence of the increase in maximum contraction force and calcium sensitivity of contraction force. These events altogether slow down myosin kinetics and prolong duty cycle resulting in accumulated myosins being cooperatively recruited to actin binding sites to sustain thin filament activation as a means to fine-tune myofilament calcium sensitivity to force (By similarity). During cardiogenesis plays an early role in cardiac contractility by promoting cardiac myofibril assembly (By similarity).

**Cellular Location**

Cytoplasm, myofibril, sarcomere, A band {ECO:0000250|UniProtKB:P08733}

**Tissue Location**

Highly expressed in type I muscle fibers.

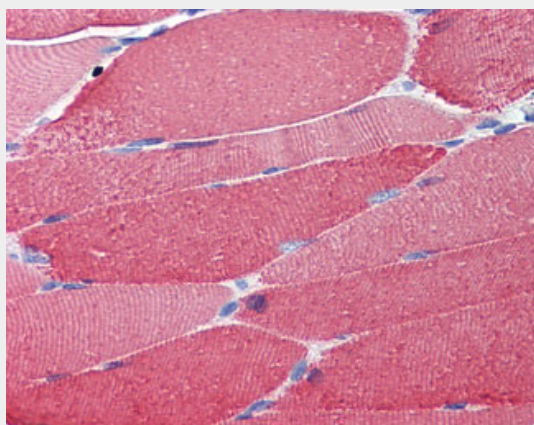
**Volume**

50  $\mu$ l

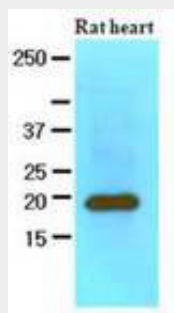
**MYL2 Antibody (clone AT3B2) - Protocols**

Provided below are standard protocols that you may find useful for product applications.

- [Western Blot](#)
- [Blocking Peptides](#)
- [Dot Blot](#)
- [Immunohistochemistry](#)
- [Immunofluorescence](#)
- [Immunoprecipitation](#)
- [Flow Cytometry](#)
- [Cell Culture](#)

**MYL2 Antibody (clone AT3B2) - Images**

Anti-MYL2 antibody IHC of human skeletal muscle.



Western analysis of rat heart extracts

**MYL2 Antibody (clone AT3B2) - References**

- Libera L.D., et al. Nucleic Acids Res. 17:2360-2360(1989).  
Wu Q.L., et al. Submitted (MAR-1996) to the EMBL/GenBank/DDBJ databases.  
Margossian S.S., et al. Submitted (AUG-1997) to the EMBL/GenBank/DDBJ databases.  
Wadgaonkar R., et al. Cell. Mol. Biol. Res. 39:13-26(1993).

Kovalyov L.I., et al. Electrophoresis 16:1160-1169(1995).