

RGS1 Antibody (C-Terminus)
Goat Polyclonal Antibody
Catalog # ALS12853**Specification**

RGS1 Antibody (C-Terminus) - Product Information

Application	WB, IHC-P
Primary Accession	Q08116
Reactivity	Human, Monkey, Horse, Bovine
Host	Goat
Clonality	Polyclonal
Calculated MW	24kDa KDa
Dilution	WB~~1:1000 IHC-P~~N/A

RGS1 Antibody (C-Terminus) - Additional Information**Gene ID** 5996**Other Names**

Regulator of G-protein signaling 1, RGS1, B-cell activation protein BL34, Early response protein 1R20, RGS1, 1R20, BL34, IER1

Target/Specificity

Human RGS1.

Reconstitution & Storage

Store at -20°C. Minimize freezing and thawing.

Precautions

RGS1 Antibody (C-Terminus) is for research use only and not for use in diagnostic or therapeutic procedures.

RGS1 Antibody (C-Terminus) - Protein Information**Name** RGS1**Synonyms** 1R20, BL34, IER1**Function**

Regulates G protein-coupled receptor signaling cascades, including signaling downstream of the N-formylpeptide chemoattractant receptors and leukotriene receptors (PubMed:10480894). Inhibits B cell chemotaxis toward CXCL12 (By similarity). Inhibits signal transduction by increasing the GTPase activity of G protein alpha subunits thereby driving them into their inactive GDP-bound form (PubMed:10480894, PubMed:18434541).

Cellular Location

Cell membrane; Peripheral membrane protein; Cytoplasmic side. Cytoplasm, cytosol

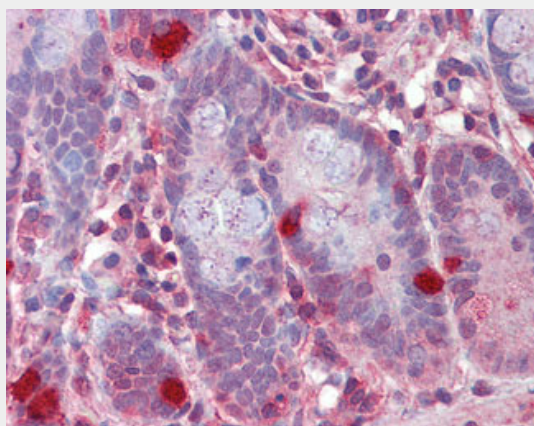
Tissue Location

Detected in peripheral blood monocytes (PubMed:10480894). Expression is relatively low in B-cells and chronic lymphocytic leukemia B-cells; however, in other types of malignant B- cell such as non-Hodgkin lymphoma and hairy cell leukemia, expression is constitutively high (PubMed:8473738).

RGS1 Antibody (C-Terminus) - Protocols

Provided below are standard protocols that you may find useful for product applications.

- [Western Blot](#)
- [Blocking Peptides](#)
- [Dot Blot](#)
- [Immunohistochemistry](#)
- [Immunofluorescence](#)
- [Immunoprecipitation](#)
- [Flow Cytometry](#)
- [Cell Culture](#)

RGS1 Antibody (C-Terminus) - Images

Anti-RGS1 antibody IHC of human small intestine.

RGS1 Antibody (C-Terminus) - Background

Inhibits signal transduction by increasing the GTPase activity of G protein alpha subunits thereby driving them into their inactive GDP-bound form. This protein may be involved in the regulation of B-cell activation and proliferation.

RGS1 Antibody (C-Terminus) - References

Ota T.,et al.Nat. Genet. 36:40-45(2004).
Gregory S.G.,et al.Nature 441:315-321(2006).
Hong J.X.,et al.J. Immunol. 150:3895-3904(1993).
Newton J.S.,et al.Biochim. Biophys. Acta 1216:314-316(1993).
Puhl H.L. III,et al.Submitted (MAR-2002) to the EMBL/GenBank/DBJ databases.