

**FEZ1 Antibody (Internal)**  
**Goat Polyclonal Antibody**  
**Catalog # ALS12861****Specification**

---

**FEZ1 Antibody (Internal) - Product Information**

Application	IHC
Primary Accession	<a href="#">Q99689</a>
Reactivity	Human, Rat, Rabbit, Hamster, Monkey, Horse, Bovine, Dog
Host	Goat
Clonality	Polyclonal
Calculated MW	45kDa KDa

**FEZ1 Antibody (Internal) - Additional Information****Gene ID** 9638**Other Names**

Fasciculation and elongation protein zeta-1, Zygin I, Zygin-1, FEZ1

**Target/Specificity**

Human FEZ1. This antibody is expected to recognize isoform 1 (NP\_005094.1) only.

**Reconstitution & Storage**

Store at -20°C. Minimize freezing and thawing.

**Precautions**

FEZ1 Antibody (Internal) is for research use only and not for use in diagnostic or therapeutic procedures.

**FEZ1 Antibody (Internal) - Protein Information****Name** FEZ1**Function**

May be involved in axonal outgrowth as component of the network of molecules that regulate cellular morphology and axon guidance machinery. Able to restore partial locomotion and axonal fasciculation to C.elegans unc-76 mutants in germline transformation experiments. May participate in the transport of mitochondria and other cargos along microtubules.

**Cellular Location**Cytoplasm, cytoskeleton, microtubule organizing center, centrosome. Cell membrane.  
Note=Colocalizes with both, alpha- and gamma-tubulin Translocated from the plasma membrane to the cytoplasm by activation of the PKC zeta (By similarity).**Tissue Location**

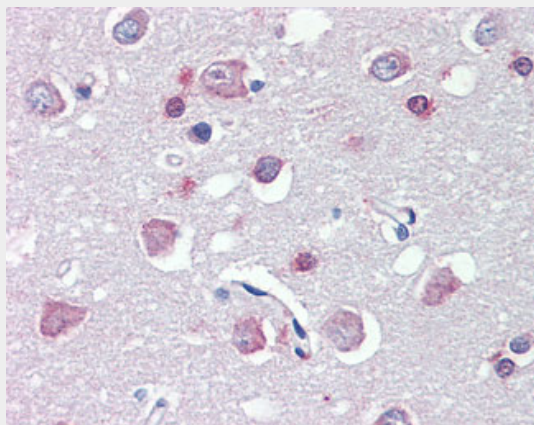
Mainly expressed in brain.

## FEZ1 Antibody (Internal) - Protocols

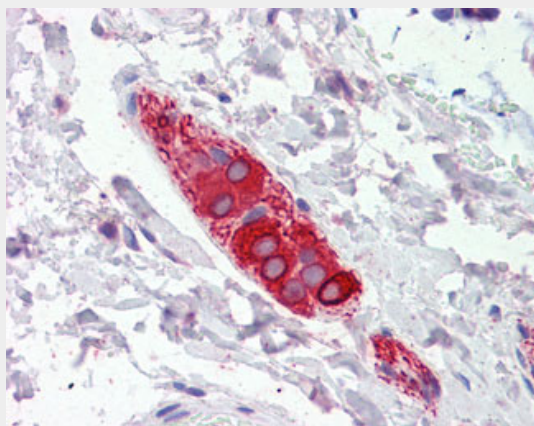
Provided below are standard protocols that you may find useful for product applications.

- [Western Blot](#)
- [Blocking Peptides](#)
- [Dot Blot](#)
- [Immunohistochemistry](#)
- [Immunofluorescence](#)
- [Immunoprecipitation](#)
- [Flow Cytometry](#)
- [Cell Culture](#)

## FEZ1 Antibody (Internal) - Images



Anti-FEZ1 antibody IHC of human brain, cortex.



Anti-FEZ1 antibody IHC of human colon, submucosal plexus.

## FEZ1 Antibody (Internal) - Background

May be involved in axonal outgrowth as component of the network of molecules that regulate cellular morphology and axon guidance machinery. Able to restore partial locomotion and axonal fasciculation to *C.elegans* unc-76 mutants in germline transformation experiments. May participate in the transport of mitochondria and other cargos along microtubules.

## FEZ1 Antibody (Internal) - References

Bloom L.,et al.Proc. Natl. Acad. Sci. U.S.A. 94:3414-3419(1997).  
Sugita S.,et al.Submitted (AUG-1996) to the EMBL/GenBank/DDBJ databases.  
Ebert L.,et al.Submitted (JUN-2004) to the EMBL/GenBank/DDBJ databases.  
Halleck A.,et al.Submitted (JUN-2004) to the EMBL/GenBank/DDBJ databases.  
Okumura F.,et al.J. Biol. Chem. 279:53533-53543(2004).