

CRYAB / Alpha B Crystallin Antibody
Rabbit Polyclonal Antibody
Catalog # ALS12907**Specification**

CRYAB / Alpha B Crystallin Antibody - Product Information

Application	IHC
Primary Accession	P02511
Reactivity	Human, Mouse, Rat, Pig, Bovine
Host	Rabbit
Clonality	Polyclonal
Calculated MW	20kDa KDa

CRYAB / Alpha B Crystallin Antibody - Additional Information**Gene ID** 1410**Other Names**

Alpha-crystallin B chain, Alpha(B)-crystallin, Heat shock protein beta-5, HspB5, Renal carcinoma antigen NY-REN-27, Rosenthal fiber component, CRYAB, CRYA2

Reconstitution & Storage

Long term: -20°C; Short term: +4°C; Avoid freeze-thaw cycles.

Precautions

CRYAB / Alpha B Crystallin Antibody is for research use only and not for use in diagnostic or therapeutic procedures.

CRYAB / Alpha B Crystallin Antibody - Protein Information**Name** CRYAB ([HGNC:2389](#))**Synonyms** CRYA2, HSPB5**Function**

May contribute to the transparency and refractive index of the lens. Has chaperone-like activity, preventing aggregation of various proteins under a wide range of stress conditions. In lens epithelial cells, stabilizes the ATP6V1A protein, preventing its degradation by the proteasome (By similarity).

Cellular Location

Cytoplasm. Nucleus Secreted. Lysosome {ECO:0000250|UniProtKB:P23927}. Note=Translocates to the nucleus during heat shock and resides in sub-nuclear structures known as SC35 speckles or nuclear splicing speckles (PubMed:19464326). Localizes at the Z- bands and the intercalated disk in cardiomyocytes (PubMed:28493373) Can be secreted; the secretion is dependent on protein unfolding and facilitated by the cargo receptor TMED10; it results in protein translocation from the cytoplasm into the ERGIC (endoplasmic reticulum- Golgi intermediate compartment) followed by vesicle entry and secretion (PubMed:32272059).

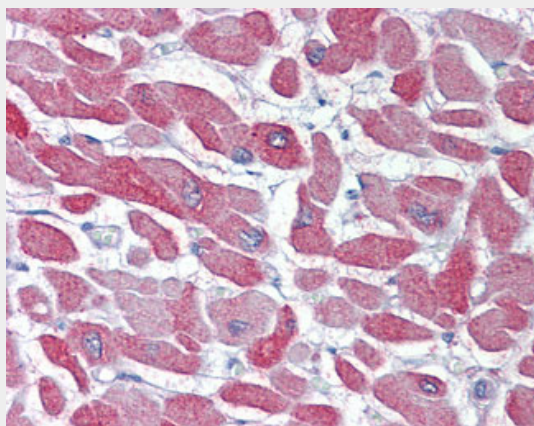
Tissue Location

Lens as well as other tissues (PubMed:838078, PubMed:2387586). Expressed in myocardial tissue (PubMed:28493373)

CRYAB / Alpha B Crystallin Antibody - Protocols

Provided below are standard protocols that you may find useful for product applications.

- [Western Blot](#)
- [Blocking Peptides](#)
- [Dot Blot](#)
- [Immunohistochemistry](#)
- [Immunofluorescence](#)
- [Immunoprecipitation](#)
- [Flow Cytometry](#)
- [Cell Culture](#)

CRYAB / Alpha B Crystallin Antibody - Images

Anti-CRYAB / Alpha B Crystallin antibody IHC of human heart.

CRYAB / Alpha B Crystallin Antibody - Background

May contribute to the transparency and refractive index of the lens. Has chaperone-like activity, preventing aggregation of various proteins under a wide range of stress conditions.

CRYAB / Alpha B Crystallin Antibody - References

- Kramps J.A., et al. FEBS Lett. 74:82-84(1977).
Dubin R.A., et al. Genomics 7:594-601(1990).
Iwaki A., et al. Neurosci. Lett. 140:89-92(1992).
Yu W., et al. Submitted (JUN-1997) to the EMBL/GenBank/DDBJ databases.
Ota T., et al. Nat. Genet. 36:40-45(2004).