

CANX / Calnexin Antibody
Rabbit Polyclonal Antibody
Catalog # ALS12913**Specification**

CANX / Calnexin Antibody - Product Information

Application	WB, IHC-P
Primary Accession	P27824
Reactivity	Human, Mouse, Rat, Rabbit, Hamster, Monkey, Pig, Sheep, Xenopus, Bovine, Guinea Pig, Dog
Host	Rabbit
Clonality	Polyclonal
Calculated MW	68kDa KDa
Dilution	WB~~1:1000 IHC-P~~N/A

CANX / Calnexin Antibody - Additional Information**Gene ID** 821**Other Names**

Calnexin, IP90, Major histocompatibility complex class I antigen-binding protein p88, p90, CANX

Reconstitution & Storage

Store at -20°C.

Precautions

CANX / Calnexin Antibody is for research use only and not for use in diagnostic or therapeutic procedures.

CANX / Calnexin Antibody - Protein Information**Name** CANX**Function**

Calcium-binding protein that interacts with newly synthesized monoglucosylated glycoproteins in the endoplasmic reticulum. It may act in assisting protein assembly and/or in the retention within the ER of unassembled protein subunits. It seems to play a major role in the quality control apparatus of the ER by the retention of incorrectly folded proteins. Associated with partial T-cell antigen receptor complexes that escape the ER of immature thymocytes, it may function as a signaling complex regulating thymocyte maturation. Additionally it may play a role in receptor-mediated endocytosis at the synapse.

Cellular Location

Endoplasmic reticulum membrane; Single-pass type I membrane protein. Mitochondrion membrane {ECO:0000250|UniProtKB:P24643}; Single-pass type I membrane protein. Melanosome membrane; Single-pass type I membrane protein. Note=Identified by mass spectrometry in

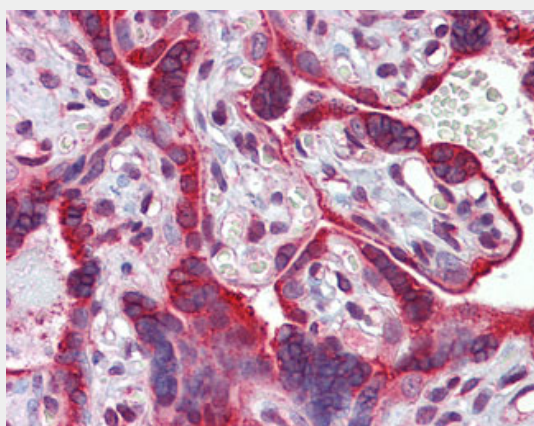
melanosome fractions from stage I to stage IV (PubMed:12643545, PubMed:17081065). The palmitoylated form preferentially localizes to the perinuclear rough ER (PubMed:22314232) Localizes to endoplasmic reticulum mitochondria-associated membrane (MAMs) that connect the endoplasmic reticulum and the mitochondria (By similarity). {ECO:0000250|UniProtKB:P24643, ECO:0000269|PubMed:12643545, ECO:0000269|PubMed:17081065, ECO:0000269|PubMed:22314232}

CANX / Calnexin Antibody - Protocols

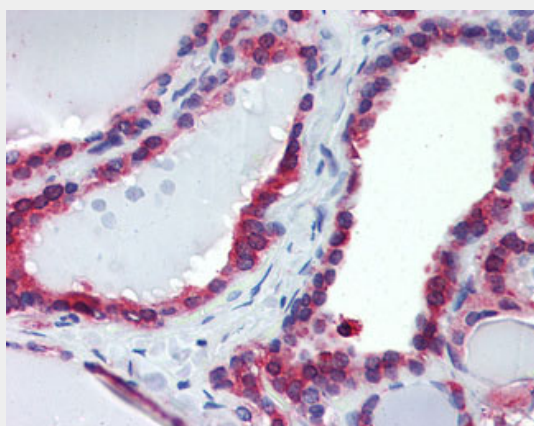
Provided below are standard protocols that you may find useful for product applications.

- [Western Blot](#)
- [Blocking Peptides](#)
- [Dot Blot](#)
- [Immunohistochemistry](#)
- [Immunofluorescence](#)
- [Immunoprecipitation](#)
- [Flow Cytometry](#)
- [Cell Culture](#)

CANX / Calnexin Antibody - Images



Anti-Calnexin antibody IHC of human placenta.



Anti-Calnexin antibody IHC of human thyroid.

CANX / Calnexin Antibody - Background

Calcium-binding protein that interacts with newly synthesized glycoproteins in the endoplasmic reticulum. It may act in assisting protein assembly and/or in the retention within the ER of unassembled protein subunits. It seems to play a major role in the quality control apparatus of the ER by the retention of incorrectly folded proteins. Associated with partial T-cell antigen receptor complexes that escape the ER of immature thymocytes, it may function as a signaling complex regulating thymocyte maturation. Additionally it may play a role in receptor- mediated endocytosis at the synapse.

CANX / Calnexin Antibody - References

David V.,et al.J. Biol. Chem. 268:9585-9592(1993).
Tjoelker L.W.,et al.Biochemistry 33:3229-3236(1994).
Honore B.,et al.Electrophoresis 15:482-490(1994).
Hansen J.J.,et al.Submitted (FEB-2000) to the EMBL/GenBank/DDBJ databases.
Ota T.,et al.Nat. Genet. 36:40-45(2004).