

**KRT18 / CK18 / Cytokeratin 18 Antibody (clone DA-7)**  
**Mouse Monoclonal Antibody**  
**Catalog # ALS12929****Specification**

---

**KRT18 / CK18 / Cytokeratin 18 Antibody (clone DA-7) - Product Information**

Application	IHC
Primary Accession	<a href="#">P05783</a>
Reactivity	Human
Host	Mouse
Clonality	Monoclonal
Calculated MW	48kDa KDa

**KRT18 / CK18 / Cytokeratin 18 Antibody (clone DA-7) - Additional Information****Gene ID** 3875**Other Names**

Keratin, type I cytoskeletal 18, Cell proliferation-inducing gene 46 protein, Cytokeratin-18, CK-18, Keratin-18, K18, KRT18, CYK18

**Target/Specificity**

Reacts with Cytokeratin 18 (45 kD). Cytokeratins are a member of intermediate filaments subfamily represented in epithelial tissues.

**Reconstitution & Storage**

Short term 4°C, long term aliquot and store at -20°C, avoid freeze thaw cycles.

**Precautions**

KRT18 / CK18 / Cytokeratin 18 Antibody (clone DA-7) is for research use only and not for use in diagnostic or therapeutic procedures.

**KRT18 / CK18 / Cytokeratin 18 Antibody (clone DA-7) - Protein Information****Name** KRT18**Synonyms** CYK18**Function**

Involved in the uptake of thrombin-antithrombin complexes by hepatic cells (By similarity). When phosphorylated, plays a role in filament reorganization. Involved in the delivery of mutated CFTR to the plasma membrane. Together with KRT8, is involved in interleukin-6 (IL-6)-mediated barrier protection.

**Cellular Location**

Nucleus matrix {ECO:0000250|UniProtKB:Q5BJY9}. Cytoplasm, perinuclear region. Nucleus, nucleolus. Cytoplasm {ECO:0000250|UniProtKB:Q5BJY9}

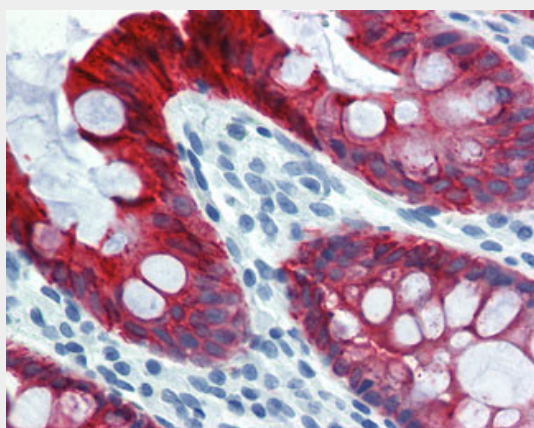
**Tissue Location**

Expressed in colon, placenta, liver and very weakly in exocervix. Increased expression observed in lymph nodes of breast carcinoma.

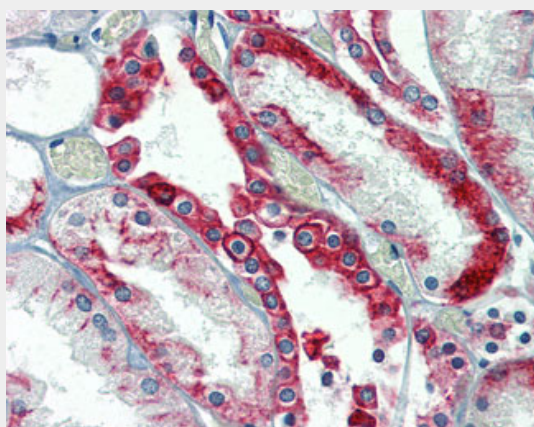
**KRT18 / CK18 / Cytokeratin 18 Antibody (clone DA-7) - Protocols**

Provided below are standard protocols that you may find useful for product applications.

- [Western Blot](#)
- [Blocking Peptides](#)
- [Dot Blot](#)
- [Immunohistochemistry](#)
- [Immunofluorescence](#)
- [Immunoprecipitation](#)
- [Flow Cytometry](#)
- [Cell Culture](#)

**KRT18 / CK18 / Cytokeratin 18 Antibody (clone DA-7) - Images**

Anti-KRT18 / Cytokeratin 18 antibody IHC of human colon.



Anti-KRT18 / Cytokeratin 18 antibody IHC of human kidney.

**KRT18 / CK18 / Cytokeratin 18 Antibody (clone DA-7) - Background**

Involved in the uptake of thrombin-antithrombin complexes by hepatic cells (By similarity). When phosphorylated, plays a role in filament reorganization. Involved in the delivery of mutated CFTR to

the plasma membrane. Together with KRT8, is involved in interleukin-6 (IL-6)-mediated barrier protection.

#### **KRT18 / CK18 / Cytokeratin 18 Antibody (clone DA-7) - References**

Oshima R.G.,et al.Differentiation 33:61-68(1986).  
Kim J.W.,et al.Submitted (SEP-2004) to the EMBL/GenBank/DDBJ databases.  
Kalnine N.,et al.Submitted (OCT-2004) to the EMBL/GenBank/DDBJ databases.  
Suzuki Y.,et al.Submitted (APR-2005) to the EMBL/GenBank/DDBJ databases.  
Kulesh D.A.,et al.Mol. Cell. Biol. 8:1540-1550(1988).