

Mouse Human IgA Secondary Antibody (clone AD3)
Mouse Monoclonal Antibody
Catalog # ALS12932**Specification**

Mouse Human IgA Secondary Antibody (clone AD3) - Product Information

Application	IHC
Reactivity	Human
Host	Mouse
Clonality	Monoclonal

Mouse Human IgA Secondary Antibody (clone AD3) - Additional Information**Target/Specificity**

Reacts with alpha-chain of human IgA1 and IgA2

Reconstitution & Storage

Short term 4°C, long term aliquot and store at -20°C, avoid freeze thaw cycles.

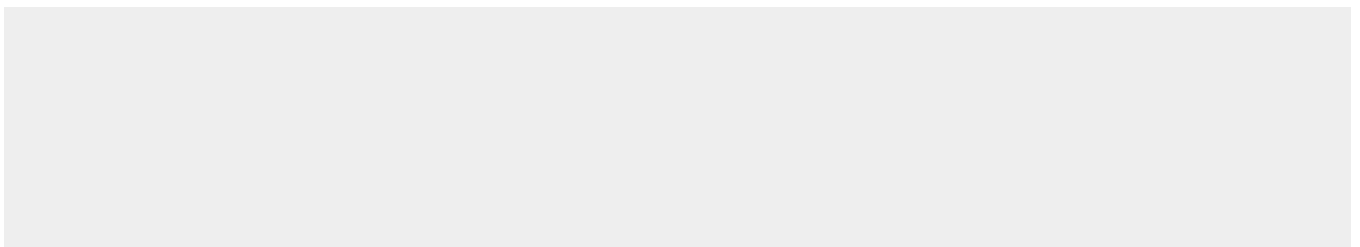
Precautions

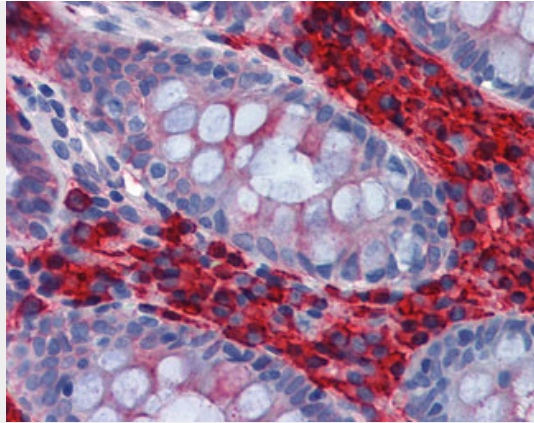
Mouse Human IgA Secondary Antibody (clone AD3) is for research use only and not for use in diagnostic or therapeutic procedures.

Mouse Human IgA Secondary Antibody (clone AD3) - Protein Information**Mouse Human IgA Secondary Antibody (clone AD3) - Protocols**

Provided below are standard protocols that you may find useful for product applications.

- [Western Blot](#)
- [Blocking Peptides](#)
- [Dot Blot](#)
- [Immunohistochemistry](#)
- [Immunofluorescence](#)
- [Immunoprecipitation](#)
- [Flow Cytometry](#)
- [Cell Culture](#)

Mouse Human IgA Secondary Antibody (clone AD3) - Images



Anti-IgA antibody IHC of human colon.