

**LAT2 / NTAL Antibody (aa91-243)**  
**Rabbit Polyclonal Antibody**  
**Catalog # ALS12937****Specification**

---

**LAT2 / NTAL Antibody (aa91-243) - Product Information**

Application	IHC
Primary Accession	<a href="#">O9GZY6</a>
Reactivity	Human
Host	Rabbit
Clonality	Polyclonal
Calculated MW	27kDa KDa

**LAT2 / NTAL Antibody (aa91-243) - Additional Information****Gene ID** 7462**Other Names**

Linker for activation of T-cells family member 2, Linker for activation of B-cells, Membrane-associated adapter molecule, Non-T-cell activation linker, Williams-Beuren syndrome chromosomal region 15 protein, Williams-Beuren syndrome chromosomal region 5 protein, LAT2, LAB, NTAL, WBS15, WBSCR15, WBSCR5

**Target/Specificity**

Recognizes the defined epitope (aa 91-243) of human Non-T cell Activation Linker (NTAL), also known as LAB (linker of activated B cells), a 30 kD transmembrane adaptor protein present in membrane microdomains (rafts) of B cells, NK cells and myeloid ...

**Reconstitution & Storage**

Short term 4°C, long term aliquot and store at -20°C, avoid freeze thaw cycles.

**Precautions**

LAT2 / NTAL Antibody (aa91-243) is for research use only and not for use in diagnostic or therapeutic procedures.

**LAT2 / NTAL Antibody (aa91-243) - Protein Information****Name** LAT2**Synonyms** LAB, NTAL, WBS15, WBSCR15, WBSCR5**Function**

Involved in FCER1 (high affinity immunoglobulin epsilon receptor)-mediated signaling in mast cells. May also be involved in BCR (B-cell antigen receptor)-mediated signaling in B-cells and FCGR1 (high affinity immunoglobulin gamma Fc receptor I)-mediated signaling in myeloid cells. Couples activation of these receptors and their associated kinases with distal intracellular events through the recruitment of GRB2.

**Cellular Location**

Cell membrane; Single-pass type III membrane protein Note=Present in lipid rafts

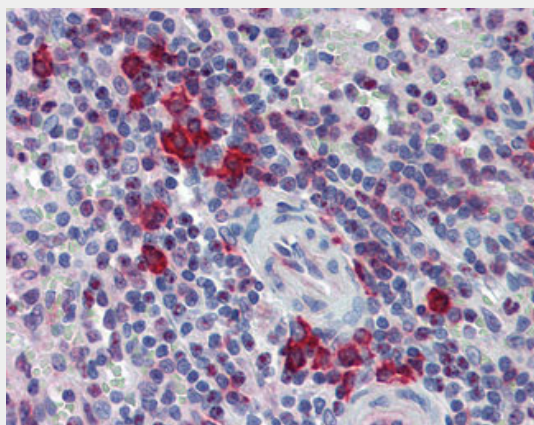
**Tissue Location**

Highly expressed in spleen, peripheral blood lymphocytes, and germinal centers of lymph nodes. Also expressed in placenta, lung, pancreas and small intestine. Present in B-cells, NK cells and monocytes. Absent from T-cells (at protein level)

**LAT2 / NTAL Antibody (aa91-243) - Protocols**

Provided below are standard protocols that you may find useful for product applications.

- [Western Blot](#)
- [Blocking Peptides](#)
- [Dot Blot](#)
- [Immunohistochemistry](#)
- [Immunofluorescence](#)
- [Immunoprecipitation](#)
- [Flow Cytometry](#)
- [Cell Culture](#)

**LAT2 / NTAL Antibody (aa91-243) - Images**

Anti-LAT2 antibody IHC of human spleen.

**LAT2 / NTAL Antibody (aa91-243) - Background**

Involved in FCER1 (high affinity immunoglobulin epsilon receptor)-mediated signaling in mast cells. May also be involved in BCR (B-cell antigen receptor)-mediated signaling in B-cells and FCGR1 (high affinity immunoglobulin gamma Fc receptor I)-mediated signaling in myeloid cells. Couples activation of these receptors and their associated kinases with distal intracellular events through the recruitment of GRB2.

**LAT2 / NTAL Antibody (aa91-243) - References**

Doyle J.L.,et al.Cytogenet. Cell Genet. 90:285-290(2000).  
Martindale D.W.,et al.Mamm. Genome 11:890-898(2000).  
Brdicka T.,et al.J. Exp. Med. 196:1617-1626(2002).  
Janssen E.,et al.Nat. Immunol. 4:117-123(2003).  
Tassabehji M.,et al.Submitted (MAR-2000) to the EMBL/GenBank/DDBJ databases.