

BDNF Antibody
Goat Polyclonal Antibody
Catalog # ALS12984**Specification**

BDNF Antibody - Product Information

Application	IHC-P
Primary Accession	P23560
Reactivity	Human, Mouse, Rat, Hamster, Monkey, Pig, Horse, Bovine, Guinea Pig, Dog
Host	Goat
Clonality	Polyclonal
Calculated MW	28kDa KDa
Dilution	IHC-P~~N/A

BDNF Antibody - Additional Information**Gene ID** 627**Other Names**

Brain-derived neurotrophic factor, BDNF, Abrineurin, BDNF

Target/Specificity

Human BDNF. This antibody is expected to recognise all reported isoforms (NP_001700.2; NP_001700.2; NP_733928.1; NP_733929.1; NP_733930.1; NP_733931.1)

Reconstitution & Storage

Store at -20°C. Minimize freezing and thawing.

Precautions

BDNF Antibody is for research use only and not for use in diagnostic or therapeutic procedures.

BDNF Antibody - Protein Information**Name** BDNF {ECO:0000303|PubMed:28397838, ECO:0000312|HGNC:HGNC:1033}**Function**

Important signaling molecule that activates signaling cascades downstream of NTRK2 (PubMed:11152678). During development, promotes the survival and differentiation of selected neuronal populations of the peripheral and central nervous systems. Participates in axonal growth, pathfinding and in the modulation of dendritic growth and morphology. Major regulator of synaptic transmission and plasticity at adult synapses in many regions of the CNS. The versatility of BDNF is emphasized by its contribution to a range of adaptive neuronal responses including long-term potentiation (LTP), long-term depression (LTD), certain forms of short-term synaptic plasticity, as well as homeostatic regulation of intrinsic neuronal excitability.

Cellular Location

Secreted

Tissue Location

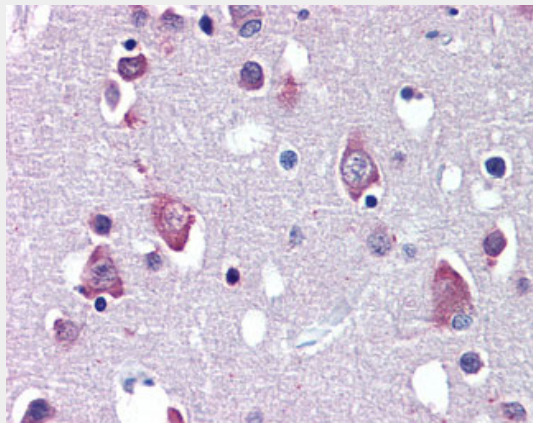
Detected in blood plasma and in saliva (at protein level) (PubMed:11152678, PubMed:19467646). Brain. Highly expressed in hippocampus, amygdala, cerebral cortex and cerebellum. Also expressed in heart, lung, skeletal muscle, testis, prostate and placenta

BDNF Antibody - Protocols

Provided below are standard protocols that you may find useful for product applications.

- [Western Blot](#)
- [Blocking Peptides](#)
- [Dot Blot](#)
- [Immunohistochemistry](#)
- [Immunofluorescence](#)
- [Immunoprecipitation](#)
- [Flow Cytometry](#)
- [Cell Culture](#)

BDNF Antibody - Images



Anti-BDNF antibody IHC of human brain, cortex.

BDNF Antibody - Background

During development, promotes the survival and differentiation of selected neuronal populations of the peripheral and central nervous systems. Participates in axonal growth, pathfinding and in the modulation of dendritic growth and morphology. Major regulator of synaptic transmission and plasticity at adult synapses in many regions of the CNS. The versatility of BDNF is emphasized by its contribution to a range of adaptive neuronal responses including long-term potentiation (LTP), long-term depression (LTD), certain forms of short-term synaptic plasticity, as well as homeostatic regulation of intrinsic neuronal excitability.

BDNF Antibody - References

- Jones K.R., et al. Proc. Natl. Acad. Sci. U.S.A. 87:8060-8064(1990).
Maisonpierre P.C., et al. Genomics 10:558-568(1991).
Shintani A., et al. Biochem. Biophys. Res. Commun. 182:325-332(1992).
Liu Q.-R., et al. Am. J. Med. Genet. B Neuropsychiatr. Genet. 134:93-103(2005).

Pruunsild P., et al. Genomics 90:397-406(2007).