

CUEDC2 Antibody (C-Terminus)
Rabbit Polyclonal Antibody
Catalog # ALS12994**Specification**

CUEDC2 Antibody (C-Terminus) - Product Information

Application	WB, ICC
Primary Accession	Q9H467
Reactivity	Human, Mouse, Rat
Host	Rabbit
Clonality	Polyclonal
Calculated MW	32kDa KDa

CUEDC2 Antibody (C-Terminus) - Additional Information**Gene ID** 79004**Other Names**

CUE domain-containing protein 2, CUEDC2, C10orf66

Reconstitution & Storage

Short term 4°C, long term aliquot and store at -20°C, avoid freeze thaw cycles. Store undiluted.

Precautions

CUEDC2 Antibody (C-Terminus) is for research use only and not for use in diagnostic or therapeutic procedures.

CUEDC2 Antibody (C-Terminus) - Protein Information**Name** CUEDC2**Synonyms** C10orf66**Function**

Down-regulates ESR1 protein levels through the ubiquitination-proteasome pathway, regardless of the presence of 17 beta-estradiol. Also involved in 17 beta-estradiol-induced ESR1 degradation. Controls PGR protein levels through a similar mechanism.

Cellular Location

Cytoplasm. Nucleus

Tissue Location

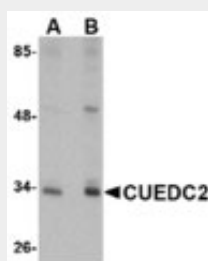
Significantly up-regulated in breast tumor tissues compared with matched adjacent normal tissues (at protein level) Levels inversely correlate with ESR1 in breast cancers and are lower in low-grade tumors compared to high-grade tumors

CUEDC2 Antibody (C-Terminus) - Protocols

Provided below are standard protocols that you may find useful for product applications.

- [Western Blot](#)
- [Blocking Peptides](#)
- [Dot Blot](#)
- [Immunohistochemistry](#)
- [Immunofluorescence](#)
- [Immunoprecipitation](#)
- [Flow Cytometry](#)
- [Cell Culture](#)

CUEDC2 Antibody (C-Terminus) - Images



Western blot of CUEDC2 in HeLa cell lysate with CUEDC2 antibody at (A) 1 and (B) 2 ug/ml.



Immunocytochemistry in HeLa cells with CUEDC2 antibody at 5 μ g/ml.

CUEDC2 Antibody (C-Terminus) - Background

Down-regulates ESR1 protein levels through the ubiquitination-proteasome pathway, regardless of the presence of 17 beta-estradiol. Also involved in 17 beta-estradiol-induced ESR1 degradation. Controls PGR protein levels through a similar mechanism.

CUEDC2 Antibody (C-Terminus) - References

Ikeda A., et al. Submitted (MAR-1999) to the EMBL/GenBank/DDBJ databases.
Matsumoto K., et al. Submitted (AUG-2005) to the EMBL/GenBank/DDBJ databases.
Deloukas P., et al. Nature 429:375-381(2004).
Mural R.J., et al. Submitted (SEP-2005) to the EMBL/GenBank/DDBJ databases.
Zhang P.-J., et al. EMBO J. 26:1831-1842(2007).