

**METTL7A Antibody (Internal)**  
**Rabbit Polyclonal Antibody**  
**Catalog # ALS13008****Specification****METTL7A Antibody (Internal) - Product Information**

Application	WB, IHC, ICC
Primary Accession	<a href="#">O9H8H3</a>
Reactivity	Human, Mouse
Host	Rabbit
Clonality	Polyclonal
Calculated MW	28kDa KDa

**METTL7A Antibody (Internal) - Additional Information****Gene ID** 25840**Other Names**

Methyltransferase-like protein 7A, 2.1.1.-, Protein AAM-B, METTL7A

**Target/Specificity**

At least two isoforms of MettL7A are known to exist. This antibody is predicted to not cross-react with MettL7B.

**Reconstitution & Storage**

Short term 4°C, long term aliquot and store at -20°C, avoid freeze thaw cycles. Store undiluted.

**Precautions**

METTL7A Antibody (Internal) is for research use only and not for use in diagnostic or therapeutic procedures.

**METTL7A Antibody (Internal) - Protein Information****Name** TMT1A {ECO:0000303|PubMed:37137720, ECO:0000312|HGNC:HGNC:24550}**Function**

Thiol S-methyltransferase that catalyzes the transfer of a methyl group from S-adenosyl-L-methionine to alkyl and phenolic thiol- containing acceptor substrates. Together with TMT1B accounts for most of S-thiol methylation activity in the endoplasmic reticulum of hepatocytes (PubMed: [37137720](http://www.uniprot.org/citations/37137720)). Able to methylate the N6 position of adenosine residues in long non-coding RNAs (lncRNAs). May facilitate lncRNAs transfer into exosomes at the tumor-stroma interface (PubMed: [34980213](http://www.uniprot.org/citations/34980213)). Promotes osteogenic and odontogenic differentiation by regulating the expression of genes involved in stem cell differentiation and survival (PubMed: [34226523](http://www.uniprot.org/citations/34226523), PubMed: [34790668](http://www.uniprot.org/citations/34790668)). Targeted from the endoplasmic reticulum to lipid droplets, where it recruits cellular proteins to form

functional organelles (PubMed:<a href="http://www.uniprot.org/citations/19773358" target="\_blank">19773358</a>).

#### Cellular Location

Lipid droplet. Endoplasmic reticulum. Membrane. Microsome Cytoplasm, cytosol. Note=Inserted in the ER membrane and migrates from the inserted site to lipid droplet

#### Tissue Location

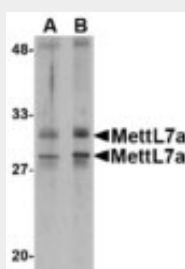
Expressed in the liver.

### METTL7A Antibody (Internal) - Protocols

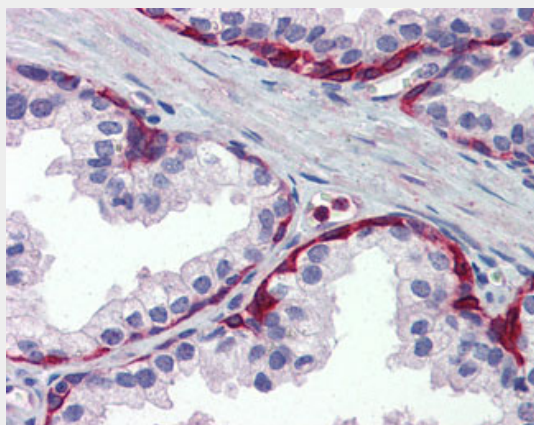
Provided below are standard protocols that you may find useful for product applications.

- [Western Blot](#)
- [Blocking Peptides](#)
- [Dot Blot](#)
- [Immunohistochemistry](#)
- [Immunofluorescence](#)
- [Immunoprecipitation](#)
- [Flow Cytometry](#)
- [Cell Culture](#)

### METTL7A Antibody (Internal) - Images



Western blot of MettlL7A in MCF cell lysate with MettlL7A antibody at 2 ug/ml.



Anti-METTL7A antibody IHC of human prostate.



Immunocytochemistry in MCF7 cells with Mettl7a antibody at 2 µg/ml.

#### **METTL7A Antibody (Internal) - Background**

Probable methyltransferase.

#### **METTL7A Antibody (Internal) - References**

Gratchev A.,et al.Submitted (JAN-2003) to the EMBL/GenBank/DDBJ databases.  
Clark H.F.,et al.Genome Res. 13:2265-2270(2003).  
Ota T.,et al.Nat. Genet. 36:40-45(2004).  
Bechtel S.,et al.BMC Genomics 8:399-399(2007).  
Zhang C.,et al.Submitted (DEC-1998) to the EMBL/GenBank/DDBJ databases.