

**SPG15 / ZFYVE26 Antibody (C-Terminus)**  
**Rabbit Polyclonal Antibody**  
**Catalog # ALS13022****Specification**

---

**SPG15 / ZFYVE26 Antibody (C-Terminus) - Product Information**

Application	IF, IHC
Primary Accession	<a href="#">Q68DK2</a>
Reactivity	Human, Mouse, Rat
Host	Rabbit
Clonality	Polyclonal
Calculated MW	285kDa KDa

**SPG15 / ZFYVE26 Antibody (C-Terminus) - Additional Information****Gene ID** 23503**Other Names**

Zinc finger FYVE domain-containing protein 26, FYVE domain-containing centrosomal protein, FYVE-CENT, Spastizin, ZFYVE26, KIAA0321

**Target/Specificity**

Multiple isoforms of SPG15 are known to exist.

**Reconstitution & Storage**

Short term 4°C, long term aliquot and store at -20°C, avoid freeze thaw cycles. Store undiluted.

**Precautions**

SPG15 / ZFYVE26 Antibody (C-Terminus) is for research use only and not for use in diagnostic or therapeutic procedures.

**SPG15 / ZFYVE26 Antibody (C-Terminus) - Protein Information****Name** ZFYVE26**Synonyms** KIAA0321**Function**

Phosphatidylinositol 3-phosphate-binding protein required for the abscission step in cytokinesis: recruited to the midbody during cytokinesis and acts as a regulator of abscission. May also be required for efficient homologous recombination DNA double-strand break repair.

**Cellular Location**

Cytoplasm, cytoskeleton, microtubule organizing center, centrosome. Midbody. Note=Localizes to the centrosome during all stages of the cell cycle. Recruited to the midbody during cytokinesis by KIF13A

**Tissue Location**

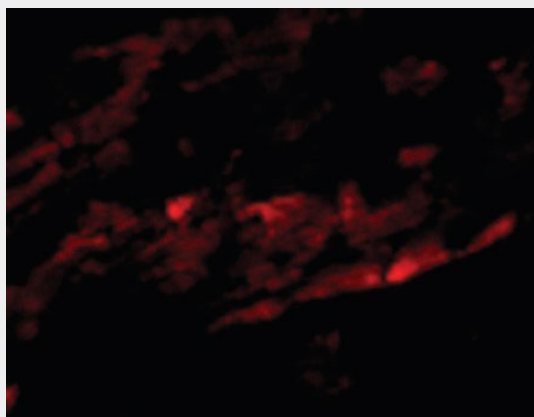
Strongest expression in the adrenal gland, bone marrow, adult brain, fetal brain, lung, placenta, prostate, skeletal muscle, testis, thymus, and retina. Intermediate levels are detected in other structures, including the spinal cord

### **SPG15 / ZFYVE26 Antibody (C-Terminus) - Protocols**

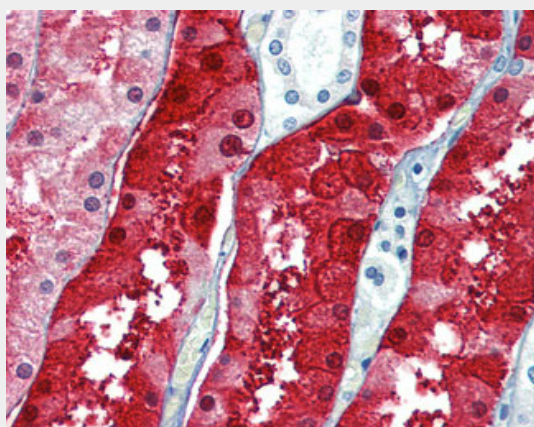
Provided below are standard protocols that you may find useful for product applications.

- [Western Blot](#)
- [Blocking Peptides](#)
- [Dot Blot](#)
- [Immunohistochemistry](#)
- [Immunofluorescence](#)
- [Immunoprecipitation](#)
- [Flow Cytometry](#)
- [Cell Culture](#)

### **SPG15 / ZFYVE26 Antibody (C-Terminus) - Images**



Immunofluorescence of SPG15 in Mouse Heart cells with SPG15 antibody at 20 ug/ml.



Anti-ZFYVE26 antibody IHC of human kidney.

### **SPG15 / ZFYVE26 Antibody (C-Terminus) - Background**

Phosphatidylinositol 3-phosphate-binding protein required for the abscission step in cytokinesis: recruited to the midbody during cytokinesis and acts as a regulator of abscission. May also be required for efficient homologous recombination DNA double-strand break repair.

**SPG15 / ZFYVE26 Antibody (C-Terminus) - References**

Nagase T.,et al.DNA Res. 4:141-150(1997).  
Ota T.,et al.Nat. Genet. 36:40-45(2004).  
Bechtel S.,et al.BMC Genomics 8:399-399(2007).  
Heilig R.,et al.Nature 421:601-607(2003).  
Mural R.J.,et al.Submitted (JUL-2005) to the EMBL/GenBank/DDBJ databases.