

PTCH1 / Patched Antibody (C-Terminus)
Goat Polyclonal Antibody
Catalog # ALS13082**Specification**

PTCH1 / Patched Antibody (C-Terminus) - Product Information

Application	IHC
Primary Accession	Q13635
Reactivity	Human, Monkey, Horse, Dog
Host	Goat
Clonality	Polyclonal
Calculated MW	161kDa KDa

PTCH1 / Patched Antibody (C-Terminus) - Additional Information**Gene ID** 5727**Other Names**

Protein patched homolog 1, PTC, PTC1, PTCH1, PTCH

Target/Specificity

Human PTCH1. This antibody is expected to recognise all reported isoforms. Variants (NP_001077073.1; NP_001077074.1; NP_001077075.1; NP_001077076.1) encode the same isoform.

Reconstitution & Storage

Store at -20°C. Minimize freezing and thawing.

Precautions

PTCH1 / Patched Antibody (C-Terminus) is for research use only and not for use in diagnostic or therapeutic procedures.

PTCH1 / Patched Antibody (C-Terminus) - Protein Information**Name** PTCH1**Synonyms** PTCH**Function**

Acts as a receptor for sonic hedgehog (SHH), indian hedgehog (IHH) and desert hedgehog (DHH). Associates with the smoothened protein (SMO) to transduce the hedgehog's proteins signal. Seems to have a tumor suppressor function, as inactivation of this protein is probably a necessary, if not sufficient step for tumorigenesis.

Cellular Location

Cell membrane {ECO:0000250|UniProtKB:Q61115}; Multi-pass membrane protein

Tissue Location

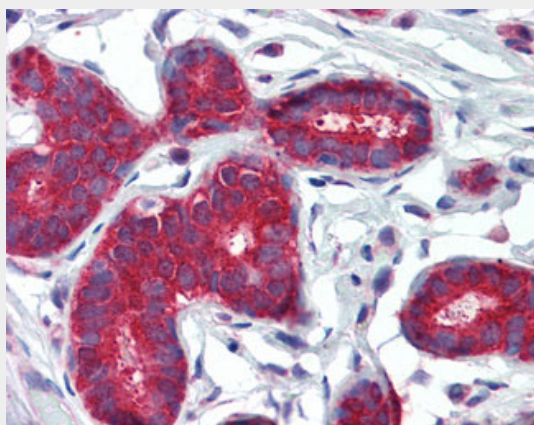
In the adult, expressed in brain, lung, liver, heart, placenta, skeletal muscle, pancreas and kidney.
Expressed in tumor cells but not in normal skin

PTCH1 / Patched Antibody (C-Terminus) - Protocols

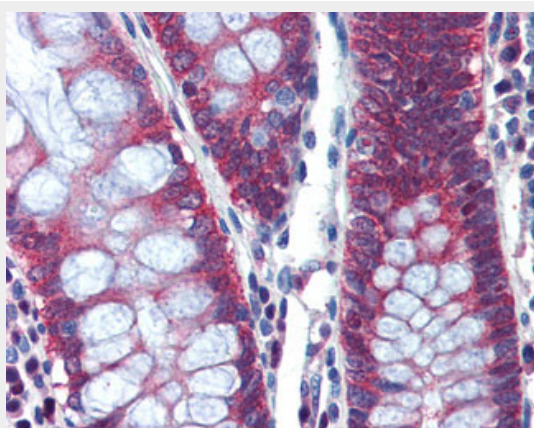
Provided below are standard protocols that you may find useful for product applications.

- [Western Blot](#)
- [Blocking Peptides](#)
- [Dot Blot](#)
- [Immunohistochemistry](#)
- [Immunofluorescence](#)
- [Immunoprecipitation](#)
- [Flow Cytometry](#)
- [Cell Culture](#)

PTCH1 / Patched Antibody (C-Terminus) - Images



Anti-PTCH1 antibody IHC of human breast.



Anti-PTCH1 antibody IHC of human colon.

PTCH1 / Patched Antibody (C-Terminus) - Background

Acts as a receptor for sonic hedgehog (SHH), indian hedgehog (IHH) and desert hedgehog (DHH). Associates with the smoothened protein (SMO) to transduce the hedgehog's proteins signal. Seems to have a tumor suppressor function, as inactivation of this protein is probably a necessary, if not

sufficient step for tumorigenesis.

PTCH1 / Patched Antibody (C-Terminus) - References

Johnson R.L.,et al.Science 272:1668-1671(1996).
Hahn H.,et al.J. Biol. Chem. 271:12125-12128(1996).
Humphray S.J.,et al.Nature 429:369-374(2004).
Nagao K.,et al.Genomics 85:462-471(2005).
Shimokawa T.,et al.Oncogene 26:4889-4896(2007).