

**ERCC1 Antibody (Internal)**  
**Goat Polyclonal Antibody**  
**Catalog # ALS13097****Specification**

---

**ERCC1 Antibody (Internal) - Product Information**

Application	IHC-P, E
Primary Accession	<a href="#">P07992</a>
Reactivity	Human, Mouse, Rat, Monkey, Bovine, Dog
Host	Goat
Clonality	Polyclonal
Calculated MW	33kDa KDa
Dilution	IHC-P~~N/A E~~N/A

**ERCC1 Antibody (Internal) - Additional Information****Gene ID** 2067**Other Names**

DNA excision repair protein ERCC-1, ERCC1

**Target/Specificity**

Human ERCC1.

**Reconstitution & Storage**

Store at -20°C. Minimize freezing and thawing.

**Precautions**

ERCC1 Antibody (Internal) is for research use only and not for use in diagnostic or therapeutic procedures.

**ERCC1 Antibody (Internal) - Protein Information****Name** ERCC1**Function**

[Isoform 1]: Non-catalytic component of a structure-specific DNA repair endonuclease responsible for the 5'-incision during DNA repair. Responsible, in conjunction with SLX4, for the first step in the repair of interstrand cross-links (ICL). Participates in the processing of anaphase bridge-generating DNA structures, which consist in incompletely processed DNA lesions arising during S or G2 phase, and can result in cytokinesis failure. Also required for homology-directed repair (HDR) of DNA double-strand breaks, in conjunction with SLX4.

**Cellular Location**

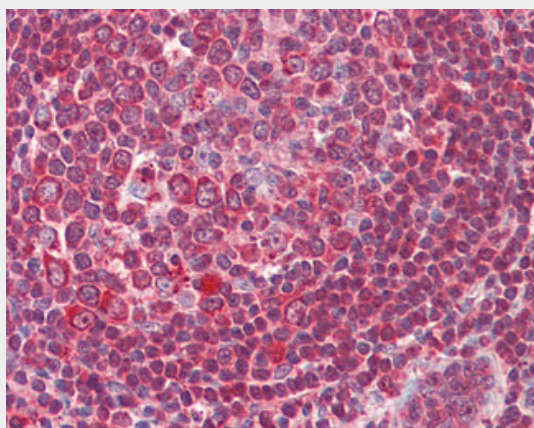
[Isoform 1]: Nucleus [Isoform 3]: Nucleus

## **ERCC1 Antibody (Internal) - Protocols**

Provided below are standard protocols that you may find useful for product applications.

- [Western Blot](#)
- [Blocking Peptides](#)
- [Dot Blot](#)
- [Immunohistochemistry](#)
- [Immunofluorescence](#)
- [Immunoprecipitation](#)
- [Flow Cytometry](#)
- [Cell Culture](#)

## **ERCC1 Antibody (Internal) - Images**



Anti-ERCC1 antibody IHC of human tonsil.

## **ERCC1 Antibody (Internal) - Background**

Isoform 1: Non-catalytic component of a structure- specific DNA repair endonuclease responsible for the 5'-incision during DNA repair. Responsible, in conjunction with SLX4, for the first step in the repair of interstrand cross-links (ICL). Participates in the processing of anaphase bridge-generating DNA structures, which consist in incompletely processed DNA lesions arising during S or G2 phase, and can result in cytokinesis failure. Also required for homology-directed repair (HDR) of DNA double-strand breaks, in conjunction with SLX4.

## **ERCC1 Antibody (Internal) - References**

van Duin M.,et al.Cell 44:913-923(1986).  
Hoeijmakers J.H.J.,et al.Cold Spring Harb. Symp. Quant. Biol. 51:91-101(1986).  
Yu J.J.,et al.Mutat. Res. 382:13-20(1997).  
Hisatomi H.,et al.Submitted (AUG-2001) to the EMBL/GenBank/DDBJ databases.  
Ota T.,et al.Nat. Genet. 36:40-45(2004).