

SHROOM2 Antibody
Rabbit Polyclonal Antibody
Catalog # ALS13128**Specification**

SHROOM2 Antibody - Product Information

Application	WB, IHC-P
Primary Accession	Q13796
Reactivity	Human
Host	Rabbit
Clonality	Polyclonal
Calculated MW	176kDa KDa
Dilution	WB~~1:1000 IHC-P~~N/A

SHROOM2 Antibody - Additional Information**Gene ID** 357**Other Names**

Protein Shroom2, Apical-like protein, Protein APXL, SHROOM2, APXL

Target/Specificity

Human APXL.

Reconstitution & Storage

Aliquot and store at -20°C. Minimize freezing and thawing.

Precautions

SHROOM2 Antibody is for research use only and not for use in diagnostic or therapeutic procedures.

SHROOM2 Antibody - Protein Information**Name** SHROOM2**Synonyms** APXL**Function**

May be involved in endothelial cell morphology changes during cell spreading. In the retinal pigment epithelium, may regulate the biogenesis of melanosomes and promote their association with the apical cell surface by inducing gamma-tubulin redistribution (By similarity).

Cellular Location

Apical cell membrane. Cell junction, tight junction. Cytoplasm, cytoskeleton. Note=Associates with cortical F-actin.

Tissue Location

Abundant in retina and melanoma; also in brain, placenta, lung, kidney and pancreas

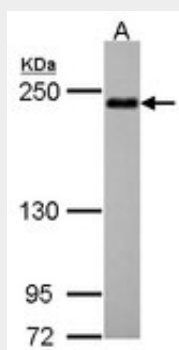
Volume

50 µl

SHROOM2 Antibody - Protocols

Provided below are standard protocols that you may find useful for product applications.

- [Western Blot](#)
- [Blocking Peptides](#)
- [Dot Blot](#)
- [Immunohistochemistry](#)
- [Immunofluorescence](#)
- [Immunoprecipitation](#)
- [Flow Cytometry](#)
- [Cell Culture](#)

SHROOM2 Antibody - Images

Sample (30 ug of whole cell lysate). A: Hep G2. 5% SDS PAGE. SHROOM2 antibody diluted at 1:500.

SHROOM2 Antibody - Background

May be involved in endothelial cell morphology changes during cell spreading. In the retinal pigment epithelium, may regulate the biogenesis of melanosomes and promote their association with the apical cell surface by inducing gamma-tubulin redistribution (By similarity).

SHROOM2 Antibody - References

Schiaffino V.M., et al. Hum. Mol. Genet. 4:373-382(1995).
Ross M.T., et al. Nature 434:325-337(2005).
Hagens O., et al. BMC Cell Biol. 7:18-18(2006).
Rigbolt K.T., et al. Sci. Signal. 4:RS3-RS3(2011).
Sjoeblom T., et al. Science 314:268-274(2006).