

FFAR1 / GPR40 Antibody
Rabbit Polyclonal Antibody
Catalog # ALS13134**Specification**

FFAR1 / GPR40 Antibody - Product Information

Application	WB, IHC
Primary Accession	O14842
Reactivity	Human
Host	Rabbit
Clonality	Polyclonal
Calculated MW	31kDa KDa

FFAR1 / GPR40 Antibody - Additional Information**Gene ID** 2864**Other Names**

Free fatty acid receptor 1, G-protein coupled receptor 40, FFAR1, GPR40

Target/Specificity

Human GPR40.

Reconstitution & Storage

Long term: -20°C; Short term: +4°C; Avoid freeze-thaw cycles.

Precautions

FFAR1 / GPR40 Antibody is for research use only and not for use in diagnostic or therapeutic procedures.

FFAR1 / GPR40 Antibody - Protein Information**Name** FFAR1**Synonyms** GPR40**Function**

G-protein coupled receptor for medium and long chain saturated and unsaturated fatty acids that plays an important role in glucose homeostasis. Fatty acid binding increases glucose-stimulated insulin secretion, and may also enhance the secretion of glucagon-like peptide 1 (GLP-1). May also play a role in bone homeostasis; receptor signaling activates pathways that inhibit osteoclast differentiation (By similarity). Ligand binding leads to a conformation change that triggers signaling via G-proteins that activate phospholipase C, leading to an increase of the intracellular calcium concentration. Seems to act through a G(q) and G(i)-mediated pathway. Mediates the anti-inflammatory effects of omega-3 polyunsaturated fatty acids (PUFAs) via inhibition of NLRP3 inflammasome activation.

Cellular Location

Cell membrane; Multi-pass membrane protein

Tissue Location

Detected in brain and pancreas. Detected in pancreatic beta cells.

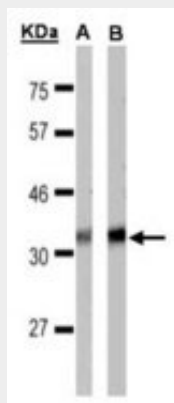
Volume

50 μ l

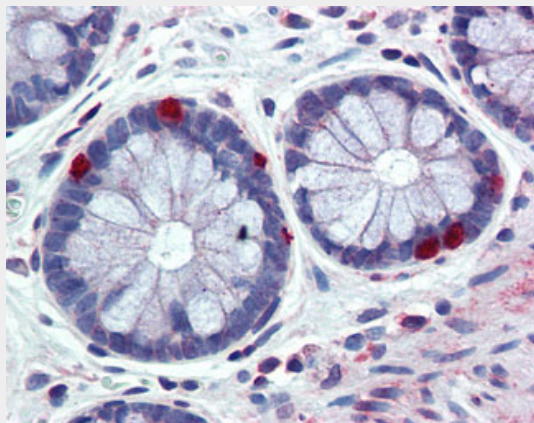
FFAR1 / GPR40 Antibody - Protocols

Provided below are standard protocols that you may find useful for product applications.

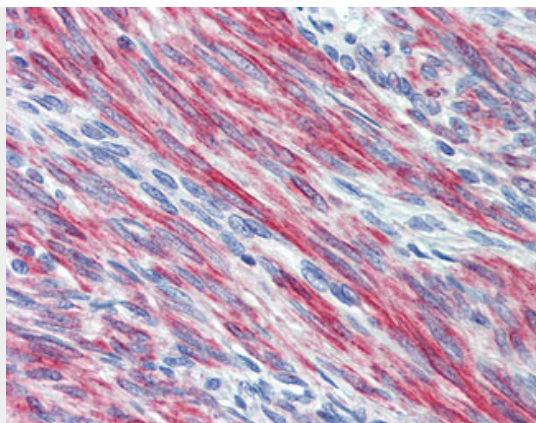
- [Western Blot](#)
- [Blocking Peptides](#)
- [Dot Blot](#)
- [Immunohistochemistry](#)
- [Immunofluorescence](#)
- [Immunoprecipitation](#)
- [Flow Cytometry](#)
- [Cell Culture](#)

FFAR1 / GPR40 Antibody - Images

Sample(30 g of whole cell lysate).



Anti-GPR40 antibody IHC of human colon.



Anti-GPR40 antibody IHC of human uterus.

FFAR1 / GPR40 Antibody - Background

G-protein coupled receptor for medium and long chain saturated and unsaturated fatty acids that plays an important role in glucose homeostasis. Fatty acid binding increases glucose- stimulated insulin secretion, and may also enhance the secretion of glucagon-like peptide 1 (GLP-1). May also play a role in bone homeostasis; receptor signaling activates pathways that inhibit osteoclast differentiation (By similarity). Ligand binding leads to a conformation change that triggers signaling via G-proteins that activate phospholipase C, leading to an increase of the intracellular calcium concentration. Seems to act through a G(q) and G(i)-mediated pathway.

FFAR1 / GPR40 Antibody - References

Sawzdargo M.,et al.Biochem. Biophys. Res. Commun. 239:543-547(1997).
Briscoe C.P.,et al.J. Biol. Chem. 278:11303-11311(2003).
Tomita T.,et al.Biochem. Biophys. Res. Commun. 338:1788-1790(2005).
Sum C.S.,et al.J. Biol. Chem. 282:29248-29255(2007).
Sum C.S.,et al.J. Biol. Chem. 284:3529-3536(2009).