

**EPHA7 / EPH Receptor A6 Antibody (clone 6C8G7)**  
**Mouse Monoclonal Antibody**  
**Catalog # ALS13153****Specification**

---

**EPHA7 / EPH Receptor A6 Antibody (clone 6C8G7) - Product Information**

Application	IHC
Primary Accession	<a href="#">Q15375</a>
Reactivity	Human
Host	Mouse
Clonality	Monoclonal
Calculated MW	112kDa KDa

**EPHA7 / EPH Receptor A6 Antibody (clone 6C8G7) - Additional Information****Gene ID** 2045**Other Names**

Ephrin type-A receptor 7, 2.7.10.1, EPH homology kinase 3, EHK-3, EPH-like kinase 11, EK11, hEK11, EPHA7, EHK3, HEK11

**Target/Specificity**

Human EPHA7

**Reconstitution & Storage**

Long term: -20°C; Short term: +4°C. Avoid repeat freeze-thaw cycles.

**Precautions**

EPHA7 / EPH Receptor A6 Antibody (clone 6C8G7) is for research use only and not for use in diagnostic or therapeutic procedures.

**EPHA7 / EPH Receptor A6 Antibody (clone 6C8G7) - Protein Information****Name** EPHA7**Synonyms** EHK3, HEK11**Function**

Receptor tyrosine kinase which binds promiscuously GPI- anchored ephrin-A family ligands residing on adjacent cells, leading to contact-dependent bidirectional signaling into neighboring cells. The signaling pathway downstream of the receptor is referred to as forward signaling while the signaling pathway downstream of the ephrin ligand is referred to as reverse signaling. Among GPI-anchored ephrin-A ligands, EFNA5 is a cognate/functional ligand for EPHA7 and their interaction regulates brain development modulating cell-cell adhesion and repulsion. Has a repellent activity on axons and is for instance involved in the guidance of corticothalamic axons and in the proper topographic mapping of retinal axons to the colliculus. May also regulate brain development through a caspase(CASP3)-dependent proapoptotic activity. Forward signaling may result in activation of components of the ERK signaling pathway including MAP2K1, MAP2K2,

MAPK1 and MAPK3 which are phosphorylated upon activation of EPHA7.

**Cellular Location**

Cell membrane; Single-pass type I membrane protein

**Tissue Location**

Widely expressed.

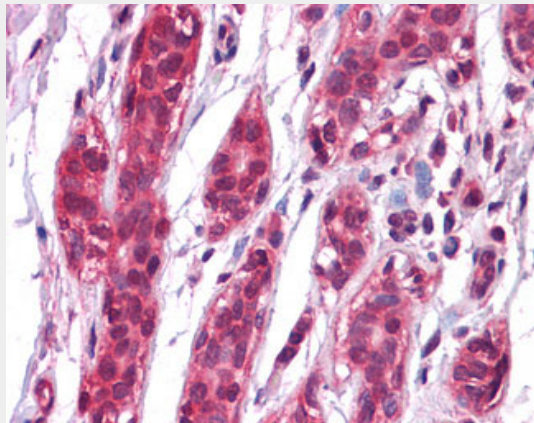
**Volume**

50  $\mu$ l

**EPHA7 / EPH Receptor A6 Antibody (clone 6C8G7) - Protocols**

Provided below are standard protocols that you may find useful for product applications.

- [Western Blot](#)
- [Blocking Peptides](#)
- [Dot Blot](#)
- [Immunohistochemistry](#)
- [Immunofluorescence](#)
- [Immunoprecipitation](#)
- [Flow Cytometry](#)
- [Cell Culture](#)

**EPHA7 / EPH Receptor A6 Antibody (clone 6C8G7) - Images**

Anti-EPHA7 antibody IHC of human breast.

**EPHA7 / EPH Receptor A6 Antibody (clone 6C8G7) - Background**

Receptor tyrosine kinase which binds promiscuously GPI- anchored ephrin-A family ligands residing on adjacent cells, leading to contact-dependent bidirectional signaling into neighboring cells. The signaling pathway downstream of the receptor is referred to as forward signaling while the signaling pathway downstream of the ephrin ligand is referred to as reverse signaling. Among GPI-anchored ephrin-A ligands, EFNA5 is a cognate/functional ligand for EPHA7 and their interaction regulates brain development modulating cell-cell adhesion and repulsion. Has a repellent activity on axons and is for instance involved in the guidance of corticothalamic axons and in the proper topographic mapping of retinal axons to the colliculus. May also regulate brain development through a caspase(CASP3)-dependent proapoptotic activity. Forward signaling may result in activation of components of the ERK signaling pathway including MAP2K1, MAP2K2, MAPK1 AND MAPK3 which are phosphorylated upon activation of EPHA7.

**EPHA7 / EPH Receptor A6 Antibody (clone 6C8G7) - References**

Fox G.M.,et al.Oncogene 10:897-905(1995).  
Ota T.,et al.Nat. Genet. 36:40-45(2004).  
Totoki Y.,et al.Submitted (MAR-2005) to the EMBL/GenBank/DDBJ databases.  
Mungall A.J.,et al.Nature 425:805-811(2003).  
Mural R.J.,et al.Submitted (SEP-2005) to the EMBL/GenBank/DDBJ databases.