

LCN1 Antibody (clone 10B10)
Mouse Monoclonal Antibody
Catalog # ALS13163**Specification**

LCN1 Antibody (clone 10B10) - Product Information

Application	IF
Primary Accession	P31025
Reactivity	Human
Host	Mouse
Clonality	Monoclonal
Calculated MW	19kDa KDa

LCN1 Antibody (clone 10B10) - Additional Information**Gene ID** 3933**Other Names**

Lipocalin-1, Tear lipocalin, Tlc, Tear prealbumin, TP, Von Ebner gland protein, VEG protein, LCN1, VEGP

Target/Specificity

Human LCN1

Reconstitution & Storage

Long term: -20°C; Short term: +4°C. Avoid repeat freeze-thaw cycles.

Precautions

LCN1 Antibody (clone 10B10) is for research use only and not for use in diagnostic or therapeutic procedures.

LCN1 Antibody (clone 10B10) - Protein Information**Name** LCN1**Synonyms** VEGP**Function**

Could play a role in taste reception. Could be necessary for the concentration and delivery of sapid molecules in the gustatory system. Can bind various ligands, with chemical structures ranging from lipids and retinoids to the macrocyclic antibiotic rifampicin and even to microbial siderophores. Exhibits an extremely wide ligand pocket.

Cellular Location

Secreted.

Tissue Location

Mainly expressed in lachrymal and salivary glands. Also expressed in the prostate

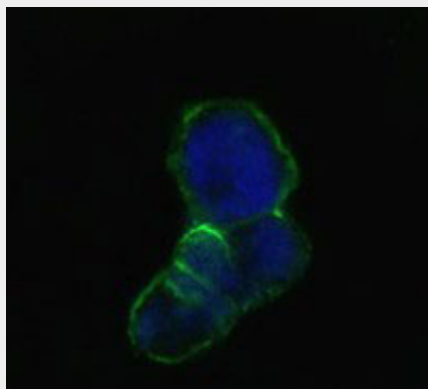
Volume
50 µl

LCN1 Antibody (clone 10B10) - Protocols

Provided below are standard protocols that you may find useful for product applications.

- [Western Blot](#)
- [Blocking Peptides](#)
- [Dot Blot](#)
- [Immunohistochemistry](#)
- [Immunofluorescence](#)
- [Immunoprecipitation](#)
- [Flow Cytometry](#)
- [Cell Culture](#)

LCN1 Antibody (clone 10B10) - Images



Confocal immunofluorescence of methanol-fixed HEK293 cells transfected with LCN1-hlgGfc using...

LCN1 Antibody (clone 10B10) - Background

Could play a role in taste reception. Could be necessary for the concentration and delivery of sapid molecules in the gustatory system. Can bind various ligands, with chemical structures ranging from lipids and retinoids to the macrocyclic antibiotic rifampicin and even to microbial siderophores. Exhibits an extremely wide ligand pocket.

LCN1 Antibody (clone 10B10) - References

Blaeker M., et al. Biochim. Biophys. Acta 1172:131-137(1993).
Redl B., et al. J. Biol. Chem. 267:20282-20287(1992).
Lassagne H., et al. Exp. Eye Res. 56:605-609(1993).
Holzfeind P., et al. Gene 139:177-183(1994).
Humphray S.J., et al. Nature 429:369-374(2004).