

GOB5 / CLCA1 Antibody (aa872-884)
Goat Polyclonal Antibody
Catalog # ALS13166**Specification**

GOB5 / CLCA1 Antibody (aa872-884) - Product Information

Application	WB, IHC
Primary Accession	A8K7I4
Reactivity	Human
Host	Goat
Clonality	Polyclonal
Calculated MW	100kDa KDa

GOB5 / CLCA1 Antibody (aa872-884) - Additional Information**Gene ID** 1179**Other Names**

Calcium-activated chloride channel regulator 1, 3.4.-., Calcium-activated chloride channel family member 1, hCLCA1, Calcium-activated chloride channel protein 1, CaCC-1, hCaCC-1, CLCA1, CACC1

Target/Specificity

Human CLCA1.

Reconstitution & Storage

Store at -20°C. Minimize freezing and thawing.

Precautions

GOB5 / CLCA1 Antibody (aa872-884) is for research use only and not for use in diagnostic or therapeutic procedures.

GOB5 / CLCA1 Antibody (aa872-884) - Protein Information**Name** CLCA1**Synonyms** CACC1**Function**

May be involved in mediating calcium-activated chloride conductance. May play critical roles in goblet cell metaplasia, mucus hypersecretion, cystic fibrosis and AHR. May be involved in the regulation of mucus production and/or secretion by goblet cells. Involved in the regulation of tissue inflammation in the innate immune response. May play a role as a tumor suppressor. Induces MUC5AC.

Cellular Location

Secreted, extracellular space. Cell membrane; Peripheral membrane protein; Extracellular side. Note=Protein that remains attached to the plasma membrane appeared to be predominantly

localized to microvilli

Tissue Location

Highly expressed in small intestine and colon namely in intestinal basal crypt epithelia and goblet cells, and appendix. Weakly expressed in uterus, testis and kidney. Expressed in the airways epithelium of both asthmatic and healthy patients Expressed in the bronchial epithelium, especially in mucus-producing goblet cells. Expressed in normal turbinate mucosa and nasal polyp Expressed in.

Volume

50 μ l

GOB5 / CLCA1 Antibody (aa872-884) - Protocols

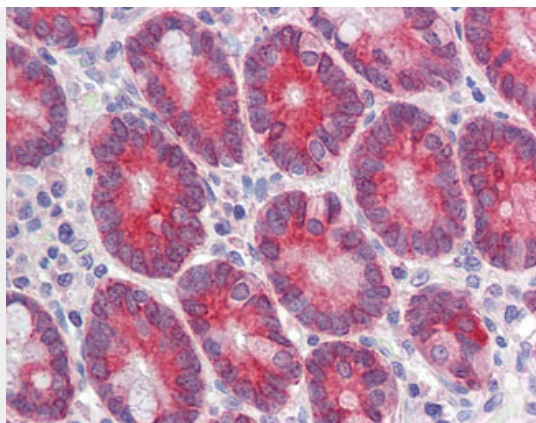
Provided below are standard protocols that you may find useful for product applications.

- [Western Blot](#)
- [Blocking Peptides](#)
- [Dot Blot](#)
- [Immunohistochemistry](#)
- [Immunofluorescence](#)
- [Immunoprecipitation](#)
- [Flow Cytometry](#)
- [Cell Culture](#)

GOB5 / CLCA1 Antibody (aa872-884) - Images



Antibody (0.3 μ g/ml) staining of Human Lung lysate (35 μ g protein in RIPA buffer).



Anti-CLCA1 antibody IHC of human small intestine.

GOB5 / CLCA1 Antibody (aa872-884) - Background

May be involved in mediating calcium-activated chloride conductance. May play critical roles in goblet cell metaplasia, mucus hypersecretion, cystic fibrosis and AHR. May be involved in the regulation of mucus production and/or secretion by goblet cells. Involved in the regulation of tissue inflammation in the innate immune response. May play a role as a tumor suppressor. Induces MUC5AC.

GOB5 / CLCA1 Antibody (aa872-884) - References

Gruber A.D.,et al.Genomics 54:200-214(1998).
Agnel M.,et al.FEBS Lett. 455:295-301(1999).
Ota T.,et al.Nat. Genet. 36:40-45(2004).
Gregory S.G.,et al.Nature 441:315-321(2006).
Mural R.J.,et al.Submitted (SEP-2005) to the EMBL/GenBank/DDBJ databases.