

MTDH / Metadherin Antibody (clone 2F11C3)
Mouse Monoclonal Antibody
Catalog # ALS13172**Specification**

MTDH / Metadherin Antibody (clone 2F11C3) - Product Information

Application	IHC
Primary Accession	Q86UE4
Reactivity	Human
Host	Mouse
Clonality	Monoclonal
Calculated MW	64kDa KDa

MTDH / Metadherin Antibody (clone 2F11C3) - Additional Information**Gene ID** 92140**Other Names**

Protein LYRIC, 3D3/LYRIC, Astrocyte elevated gene-1 protein, AEG-1, Lysine-rich CEACAM1 co-isolated protein, Metadherin, Metastasis adhesion protein, MTDH, AEG1, LYRIC

Target/Specificity

Human MTDH

Reconstitution & Storage

Long term: -20°C; Short term: +4°C. Avoid repeat freeze-thaw cycles.

Precautions

MTDH / Metadherin Antibody (clone 2F11C3) is for research use only and not for use in diagnostic or therapeutic procedures.

MTDH / Metadherin Antibody (clone 2F11C3) - Protein Information**Name** MTDH**Synonyms** AEG1, LYRIC**Function**

Down-regulates SLC1A2/EAAT2 promoter activity when expressed ectopically. Activates the nuclear factor kappa-B (NF-kappa-B) transcription factor. Promotes anchorage-independent growth of immortalized melanocytes and astrocytes which is a key component in tumor cell expansion. Promotes lung metastasis and also has an effect on bone and brain metastasis, possibly by enhancing the seeding of tumor cells to the target organ endothelium. Induces chemoresistance.

Cellular Location

Endoplasmic reticulum membrane; Single-pass membrane protein. Nucleus membrane; Single-pass membrane protein. Cell junction, tight junction Nucleus, nucleolus. Cytoplasm, perinuclear region Note=In epithelial cells, recruited to tight junctions (TJ) during the maturation of

the TJ complexes. A nucleolar staining may be due to nuclear targeting of an isoform lacking the transmembrane domain (By similarity). TNF-alpha causes translocation from the cytoplasm to the nucleus.

Tissue Location

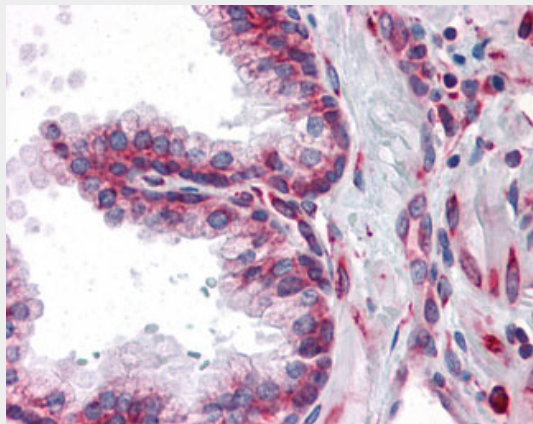
Widely expressed with highest levels in muscle- dominating organs such as skeletal muscle, heart, tongue and small intestine and in endocrine glands such as thyroid and adrenal gland
Overexpressed in various cancers including breast, brain, prostate, melanoma and glioblastoma multiforme.

MTDH / Metadherin Antibody (clone 2F11C3) - Protocols

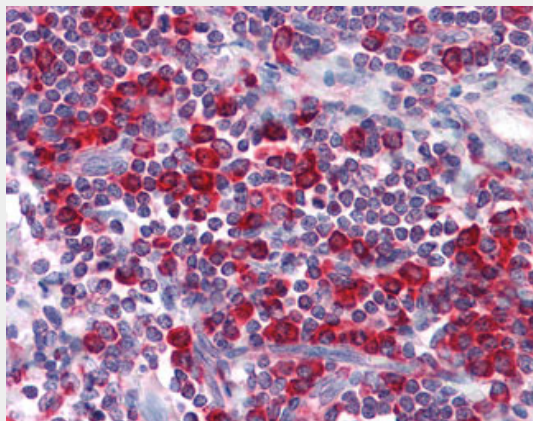
Provided below are standard protocols that you may find useful for product applications.

- [Western Blot](#)
- [Blocking Peptides](#)
- [Dot Blot](#)
- [Immunohistochemistry](#)
- [Immunofluorescence](#)
- [Immunoprecipitation](#)
- [Flow Cytometry](#)
- [Cell Culture](#)

MTDH / Metadherin Antibody (clone 2F11C3) - Images



Anti-MTDH antibody IHC of human prostate.



Anti-MTDH antibody IHC of human tonsil.

MTDH / Metadherin Antibody (clone 2F11C3) - Background

Downregulates SLC1A2/EAAT2 promoter activity when expressed ectopically. Activates the nuclear factor kappa-B (NF- kappa-B) transcription factor. Promotes anchorage-independent growth of immortalized melanocytes and astrocytes which is a key component in tumor cell expansion. Promotes lung metastasis and also has an effect on bone and brain metastasis, possibly by enhancing the seeding of tumor cells to the target organ endothelium. Induces chemoresistance.

MTDH / Metadherin Antibody (clone 2F11C3) - References

Sutherland H.G.E.,et al.Exp. Cell Res. 294:94-105(2004).
Britt D.E.,et al.Exp. Cell Res. 300:134-148(2004).
Kang D.-C.,et al.Gene 353:8-15(2005).
Liang Y.,et al.Submitted (MAR-2005) to the EMBL/GenBank/DDBJ databases.
Ota T.,et al.Nat. Genet. 36:40-45(2004).