

**NOX2 / gp91phox Antibody (Internal)**  
**Goat Polyclonal Antibody**  
**Catalog # ALS13188****Specification**

---

**NOX2 / gp91phox Antibody (Internal) - Product Information**

Application	IHC
Primary Accession	<a href="#">P04839</a>
Reactivity	Human
Host	Goat
Clonality	Polyclonal
Calculated MW	65kDa KDa

**NOX2 / gp91phox Antibody (Internal) - Additional Information****Gene ID** 1536**Other Names**

Cytochrome b-245 heavy chain, 1.-.-., CGD91-phox, Cytochrome b(558) subunit beta, Cytochrome b558 subunit beta, Heme-binding membrane glycoprotein gp91phox, NADPH oxidase 2, Neutrophil cytochrome b 91 kDa polypeptide, Superoxide-generating NADPH oxidase heavy chain subunit, gp91-1, gp91-phox, p22 phagocyte B-cytochrome, CYBB, NOX2

**Target/Specificity**

Human CYBB / gp91phox.

**Reconstitution & Storage**

Store at -20°C. Minimize freezing and thawing.

**Precautions**

NOX2 / gp91phox Antibody (Internal) is for research use only and not for use in diagnostic or therapeutic procedures.

**NOX2 / gp91phox Antibody (Internal) - Protein Information****Name** CYBB ([HGNC:2578](#))**Synonyms** NOX2**Function**

Critical component of the membrane-bound oxidase of phagocytes that generates superoxide. It is the terminal component of a respiratory chain that transfers single electrons from cytoplasmic NADPH across the plasma membrane to molecular oxygen on the exterior. Also functions as a voltage-gated proton channel that mediates the H(+) currents of resting phagocytes. It participates in the regulation of cellular pH and is blocked by zinc.

**Cellular Location**

Cell membrane; Multi-pass membrane protein. Note=As unassembled monomer may localize to

the endoplasmic reticulum

#### **Tissue Location**

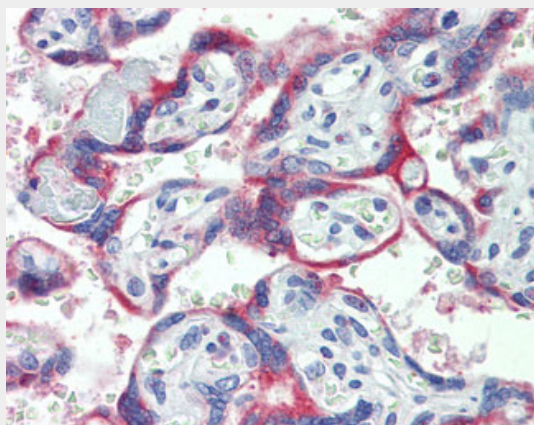
Detected in neutrophils (at protein level).

#### **NOX2 / gp91phox Antibody (Internal) - Protocols**

Provided below are standard protocols that you may find useful for product applications.

- [Western Blot](#)
- [Blocking Peptides](#)
- [Dot Blot](#)
- [Immunohistochemistry](#)
- [Immunofluorescence](#)
- [Immunoprecipitation](#)
- [Flow Cytometry](#)
- [Cell Culture](#)

#### **NOX2 / gp91phox Antibody (Internal) - Images**



Anti-NOX2 antibody IHC of human placenta.

#### **NOX2 / gp91phox Antibody (Internal) - Background**

Critical component of the membrane-bound oxidase of phagocytes that generates superoxide. It is the terminal component of a respiratory chain that transfers single electrons from cytoplasmic NADPH across the plasma membrane to molecular oxygen on the exterior. Also functions as a voltage-gated proton channel that mediates the H(+) currents of resting phagocytes. It participates in the regulation of cellular pH and is blocked by zinc.

#### **NOX2 / gp91phox Antibody (Internal) - References**

Royer-Pokora B., et al. Nature 322:32-38(1986).  
Jirapongsananuruk O., et al. Clin. Immunol. 104:73-76(2002).  
Ota T., et al. Nat. Genet. 36:40-45(2004).  
Mural R.J., et al. Submitted (SEP-2005) to the EMBL/GenBank/DBJ databases.  
Dinauer M.C., et al. Nature 327:717-720(1987).