

VCAM1 / CD106 Antibody (clone 6G9)
Mouse Monoclonal Antibody
Catalog # ALS13207**Specification**

VCAM1 / CD106 Antibody (clone 6G9) - Product Information

Application	WB, IHC-P, E
Primary Accession	P19320
Reactivity	Human
Host	Mouse
Clonality	Monoclonal
Calculated MW	81kDa KDa
Dilution	WB~~1:1000 IHC-P~~N/A E~~N/A

VCAM1 / CD106 Antibody (clone 6G9) - Additional Information**Gene ID** 7412**Other Names**

Vascular cell adhesion protein 1, V-CAM 1, VCAM-1, INCAM-100, CD106, VCAM1, L1CAM

Target/Specificity

Human VCAM1

Reconstitution & Storage

Long term: -20°C; Short term: +4°C. Avoid repeat freeze-thaw cycles.

Precautions

VCAM1 / CD106 Antibody (clone 6G9) is for research use only and not for use in diagnostic or therapeutic procedures.

VCAM1 / CD106 Antibody (clone 6G9) - Protein Information**Name** VCAM1**Function**

Cell adhesion glycoprotein predominantly expressed on the surface of endothelial cells that plays an important role in immune surveillance and inflammation (PubMed:31310649). Acts as a major regulator of leukocyte adhesion to the endothelium through interaction with different types of integrins (PubMed:10209034). During inflammatory responses, binds ligands on the surface of activated endothelial cells to initiate the activation of calcium channels and the plasma membrane-associated small GTPase RAC1 leading to leukocyte transendothelial migration (PubMed:22970700). Also serves as a quality- control checkpoint for entry into bone marrow by providing a 'don't-

eat-me' stamping in the context of major histocompatibility complex (MHC) class-I presentation (PubMed:35210567).

Cellular Location

[Vascular cell adhesion protein 1]: Cell membrane; Single-pass type I membrane protein

Tissue Location

Expressed on inflamed vascular endothelium, as well as on macrophage-like and dendritic cell types in both normal and inflamed tissue

Volume

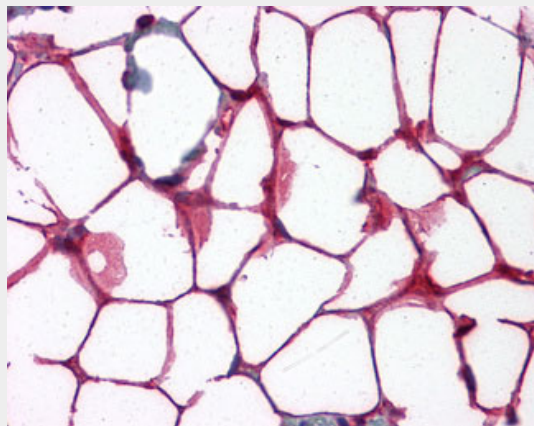
50 μ l

VCAM1 / CD106 Antibody (clone 6G9) - Protocols

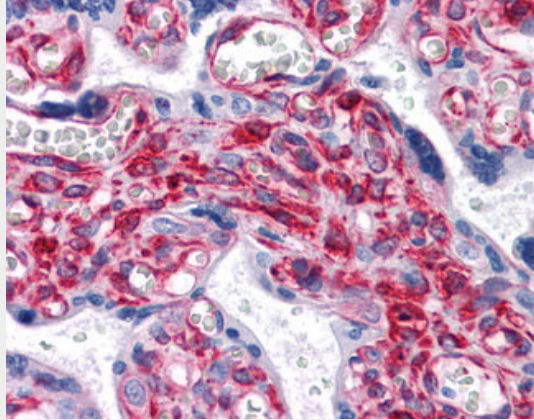
Provided below are standard protocols that you may find useful for product applications.

- [Western Blot](#)
- [Blocking Peptides](#)
- [Dot Blot](#)
- [Immunohistochemistry](#)
- [Immunofluorescence](#)
- [Immunoprecipitation](#)
- [Flow Cytometry](#)
- [Cell Culture](#)

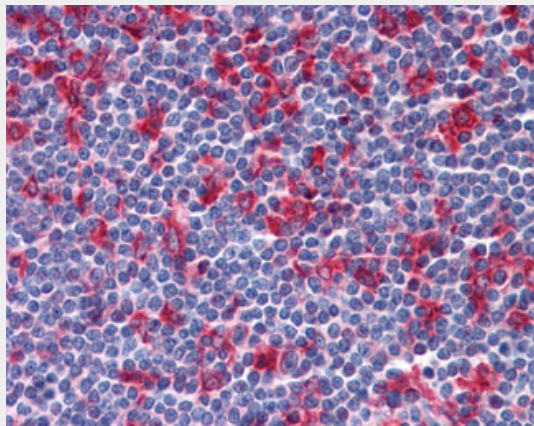
VCAM1 / CD106 Antibody (clone 6G9) - Images



Anti-VCAM1 antibody IHC of human colon, adipocytes.



Anti-VCAM1 antibody IHC of human placenta.



Anti-VCAM1 antibody IHC of human tonsil.

VCAM1 / CD106 Antibody (clone 6G9) - Background

Important in cell-cell recognition. Appears to function in leukocyte-endothelial cell adhesion. Interacts with integrin alpha-4/beta-1 (ITGA4/ITGB1) on leukocytes, and mediates both adhesion and signal transduction. The VCAM1/ITGA4/ITGB1 interaction may play a pathophysiologic role both in immune responses and in leukocyte emigration to sites of inflammation.

VCAM1 / CD106 Antibody (clone 6G9) - References

- Osborn L., et al. Cell 59:1203-1211(1989).
- Polte T., et al. Nucleic Acids Res. 18:5901-5901(1990).
- Hession C., et al. J. Biol. Chem. 266:6682-6685(1991).
- Cybulsky M.I., et al. Proc. Natl. Acad. Sci. U.S.A. 88:7859-7863(1991).
- Ota T., et al. Nat. Genet. 36:40-45(2004).