

JPH4 Antibody (Internal)
Rabbit Polyclonal Antibody
Catalog # ALS13212**Specification**

JPH4 Antibody (Internal) - Product Information

Application	IHC
Primary Accession	Q96JJ6
Reactivity	Human, Mouse, Rat
Host	Rabbit
Clonality	Polyclonal
Calculated MW	66kDa KDa

JPH4 Antibody (Internal) - Additional Information**Gene ID** 84502**Other Names**

Junctophilin-4, JP-4, Junctophilin-like 1 protein, JPH4, JPHL1, KIAA1831

Reconstitution & Storage

Short term 4°C, long term aliquot and store at -20°C, avoid freeze thaw cycles. Store undiluted.

Precautions

JPH4 Antibody (Internal) is for research use only and not for use in diagnostic or therapeutic procedures.

JPH4 Antibody (Internal) - Protein Information**Name** JPH4**Synonyms** JPHL1, KIAA1831**Function**

Junctophilins contribute to the formation of junctional membrane complexes (JMCs) which link the plasma membrane with the endoplasmic or sarcoplasmic reticulum in excitable cells. Provides a structural foundation for functional cross-talk between the cell surface and intracellular calcium release channels. JPH4 is brain- specific and appears to have an active role in certain neurons involved in motor coordination and memory (By similarity).

Cellular Location

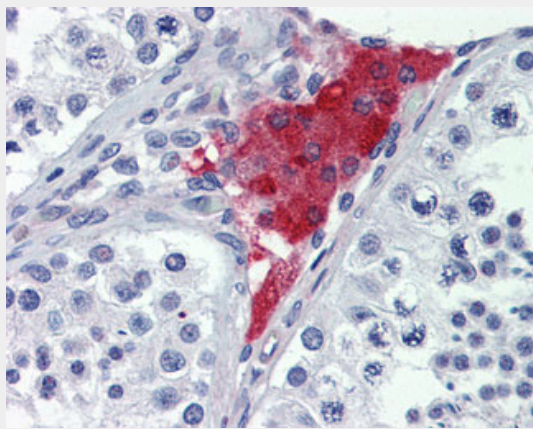
Cell membrane; Peripheral membrane protein. Endoplasmic reticulum membrane; Single-pass type IV membrane protein. Note=Localized predominantly on the plasma membrane. The transmembrane domain is anchored in endoplasmic reticulum membrane, while the N-terminal part associates with the plasma membrane (By similarity).

JPH4 Antibody (Internal) - Protocols

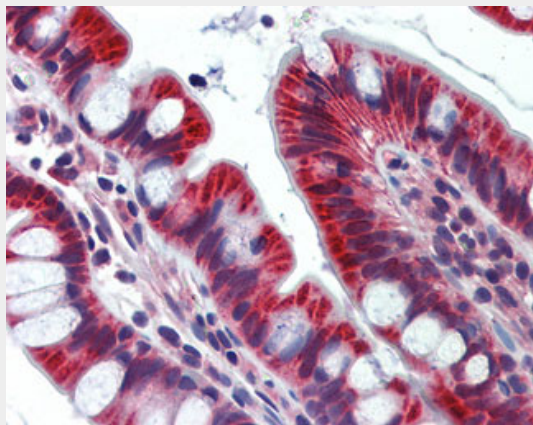
Provided below are standard protocols that you may find useful for product applications.

- [Western Blot](#)
- [Blocking Peptides](#)
- [Dot Blot](#)
- [Immunohistochemistry](#)
- [Immunofluorescence](#)
- [Immunoprecipitation](#)
- [Flow Cytometry](#)
- [Cell Culture](#)

JPH4 Antibody (Internal) - Images



Anti-JPH4 antibody IHC of human testis.



Anti-JPH4 antibody IHC of human small intestine.

JPH4 Antibody (Internal) - Background

Junctophilins contribute to the formation of junctional membrane complexes (JMCs) which link the plasma membrane with the endoplasmic or sarcoplasmic reticulum in excitable cells. Provides a structural foundation for functional cross-talk between the cell surface and intracellular calcium release channels. JPH4 is brain- specific and appears to have an active role in certain neurons involved in motor coordination and memory (By similarity).

JPH4 Antibody (Internal) - References

Nagase T.,et al.DNA Res. 8:85-95(2001).

Mural R.J.,et al.Submitted (SEP-2005) to the EMBL/GenBank/DDBJ databases.

Bechtel S.,et al.BMC Genomics 8:399-399(2007).

Ota T.,et al.Nat. Genet. 36:40-45(2004).