

**RASSF1 / RASSF1A Antibody (Internal)**  
**Goat Polyclonal Antibody**  
**Catalog # ALS13215****Specification**

---

**RASSF1 / RASSF1A Antibody (Internal) - Product Information**

Application	IHC
Primary Accession	<a href="#">O9NS23</a>
Reactivity	Human, Pig, Horse, Bovine
Host	Goat
Clonality	Polyclonal
Calculated MW	39kDa KDa

**RASSF1 / RASSF1A Antibody (Internal) - Additional Information****Gene ID** 11186**Other Names**

Ras association domain-containing protein 1, RASSF1 {ECO:0000312|EMBL:AAF35128.2}

**Target/Specificity**

Human RASSF1 / RASSF1A. This antibody is expected to recognize reported isoforms A, C and D (NP\_009113.3; NP\_733831.1; NP\_733832.1) .

**Reconstitution & Storage**

Store at -20°C. Minimize freezing and thawing.

**Precautions**

RASSF1 / RASSF1A Antibody (Internal) is for research use only and not for use in diagnostic or therapeutic procedures.

**RASSF1 / RASSF1A Antibody (Internal) - Protein Information****Name** RASSF1 {ECO:0000312|EMBL:AAF35128.2}**Function**

Potential tumor suppressor. Required for death receptor- dependent apoptosis. Mediates activation of STK3/MST2 and STK4/MST1 during Fas-induced apoptosis by preventing their dephosphorylation. When associated with MOAP1, promotes BAX conformational change and translocation to mitochondrial membranes in response to TNF and TNFSF10 stimulation. Isoform A interacts with CDC20, an activator of the anaphase-promoting complex, APC, resulting in the inhibition of APC activity and mitotic progression. Inhibits proliferation by negatively regulating cell cycle progression at the level of G1/S-phase transition by regulating accumulation of cyclin D1 protein. Isoform C has been shown not to perform these roles, no function has been identified for this isoform. Isoform A disrupts interactions among MDM2, DAXX and USP7, thus contributing to the efficient activation of TP53 by promoting MDM2 self-ubiquitination in cell-cycle checkpoint control in response to DNA damage.

**Cellular Location**

[Isoform A]: Cytoplasm, cytoskeleton. Cytoplasm, cytoskeleton, microtubule organizing center, centrosome. Cytoplasm, cytoskeleton, spindle. Cytoplasm, cytoskeleton, spindle pole. Nucleus  
Note=Localizes to cytoplasmic microtubules during interphase, to bipolar centrosomes associated with microtubules during prophase, to spindle fibers and spindle poles at metaphase and anaphase, to the midzone during early telophase, and to the midbody in late telophase in cells. Colocalizes with MDM2 in the nucleus

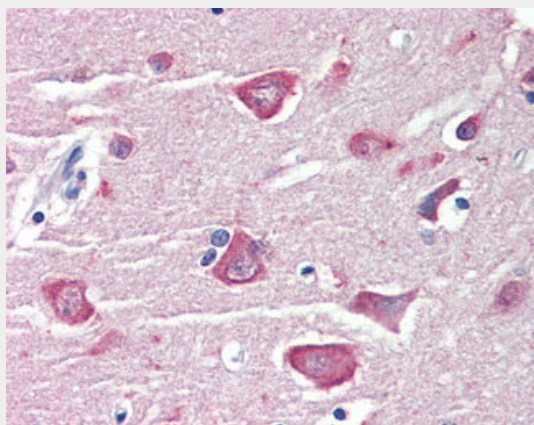
**Tissue Location**

Isoform A and isoform C are ubiquitously expressed in all tissues tested, however isoform A is absent in many corresponding cancer cell lines. Isoform B is mainly expressed in hematopoietic cells.

**RASSF1 / RASSF1A Antibody (Internal) - Protocols**

Provided below are standard protocols that you may find useful for product applications.

- [Western Blot](#)
- [Blocking Peptides](#)
- [Dot Blot](#)
- [Immunohistochemistry](#)
- [Immunofluorescence](#)
- [Immunoprecipitation](#)
- [Flow Cytometry](#)
- [Cell Culture](#)

**RASSF1 / RASSF1A Antibody (Internal) - Images**

Anti-RASSF1 antibody IHC of human brain, cortex.

**RASSF1 / RASSF1A Antibody (Internal) - Background**

Potential tumor suppressor. Required for death receptor- dependent apoptosis. Mediates activation of STK3/MST2 and STK4/MST1 during Fas-induced apoptosis by preventing their dephosphorylation. When associated with MOAP1, promotes BAX conformational change and translocation to mitochondrial membranes in response to TNF and TNFSF10 stimulation. Isoform A interacts with CDC20, an activator of the anaphase-promoting complex, APC, resulting in the inhibition of APC activity and mitotic progression. Inhibits proliferation by negatively regulating cell cycle progression at the level of G1/S-phase transition by regulating accumulation of cyclin D1 protein. Isoform C has been shown not to perform these roles, no function has been identified for this isoform. Isoform A disrupts interactions among MDM2, DAXX and USP7, thus contributing to the

efficient activation of TP53 by promoting MDM2 self-ubiquitination in cell-cycle checkpoint control in response to DNA damage.

#### **RASSF1 / RASSF1A Antibody (Internal) - References**

Dammann R.,et al.Nat. Genet. 25:315-319(2000).  
Burbee D.G.,et al.J. Natl. Cancer Inst. 93:691-699(2001).  
Kalnine N.,et al.Submitted (OCT-2004) to the EMBL/GenBank/DDBJ databases.  
Muzny D.M.,et al.Nature 440:1194-1198(2006).  
Mural R.J.,et al.Submitted (JUL-2005) to the EMBL/GenBank/DDBJ databases.