

**GH / Growth Hormone Antibody**  
**Rabbit Polyclonal Antibody**  
**Catalog # ALS13235****Specification**

---

**GH / Growth Hormone Antibody - Product Information**

Application	WB, IHC
Primary Accession	<a href="#">P01241</a>
Reactivity	Human
Host	Rabbit
Clonality	Polyclonal
Calculated MW	25kDa KDa

**GH / Growth Hormone Antibody - Additional Information****Gene ID** 2688**Other Names**

Somatotropin, Growth hormone, GH, GH-N, Growth hormone 1, Pituitary growth hormone, GH1

**Target/Specificity**

Human GH1. Predicted cross-reactivity based on amino acid sequence homology: monkey (81%). Immunogen shares only 60% identity to mouse.

**Reconstitution & Storage**

Aliquot and store at -20°C. Minimize freezing and thawing.

**Precautions**

GH / Growth Hormone Antibody is for research use only and not for use in diagnostic or therapeutic procedures.

**GH / Growth Hormone Antibody - Protein Information****Name** GH1**Function**

Plays an important role in growth control. Its major role in stimulating body growth is to stimulate the liver and other tissues to secrete IGF-1. It stimulates both the differentiation and proliferation of myoblasts. It also stimulates amino acid uptake and protein synthesis in muscle and other tissues.

**Cellular Location**

Secreted.

**Volume**

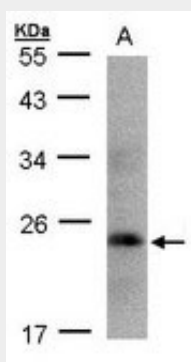
50 µl

## GH / Growth Hormone Antibody - Protocols

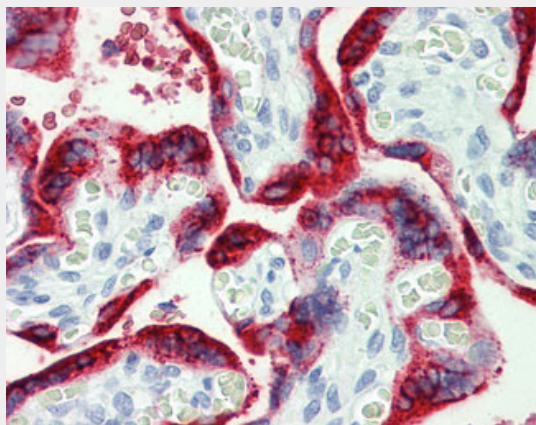
Provided below are standard protocols that you may find useful for product applications.

- [Western Blot](#)
- [Blocking Peptides](#)
- [Dot Blot](#)
- [Immunohistochemistry](#)
- [Immunofluorescence](#)
- [Immunoprecipitation](#)
- [Flow Cytometry](#)
- [Cell Culture](#)

## GH / Growth Hormone Antibody - Images



Sample(30 ug whole cell lysate). A:293T. 12% SDS PAGE. GH1 antibody diluted at 1:1000



Anti-Growth Hormone antibody IHC of human placenta.

## GH / Growth Hormone Antibody - Background

Plays an important role in growth control. Its major role in stimulating body growth is to stimulate the liver and other tissues to secrete IGF-1. It stimulates both the differentiation and proliferation of myoblasts. It also stimulates amino acid uptake and protein synthesis in muscle and other tissues.

## GH / Growth Hormone Antibody - References

Roskam W.,et al.Nucleic Acids Res. 7:305-320(1979).  
Martial J.A.,et al.Science 205:602-607(1979).  
Denoto F.M.,et al.Nucleic Acids Res. 9:3719-3730(1981).  
Seeburg P.H.,et al.DNA 1:239-249(1982).

Chen E.Y.,et al.Genomics 4:479-497(1989).