

**CLIC1 / NCC27 Antibody (clone 3F9)**  
**Mouse Monoclonal Antibody**  
**Catalog # ALS13292****Specification**

---

**CLIC1 / NCC27 Antibody (clone 3F9) - Product Information**

Application	WB, IHC
Primary Accession	<a href="#">O00299</a>
Reactivity	Human
Host	Mouse
Clonality	Monoclonal
Calculated MW	27kDa KDa

**CLIC1 / NCC27 Antibody (clone 3F9) - Additional Information****Gene ID** 1192**Other Names**

Chloride intracellular channel protein 1, Chloride channel ABP, Nuclear chloride ion channel 27, NCC27, Regulatory nuclear chloride ion channel protein, hRNCC, CLIC1, G6, NCC27

**Reconstitution & Storage**

Store at -20°C. Aliquot to avoid freeze/thaw cycles.

**Precautions**

CLIC1 / NCC27 Antibody (clone 3F9) is for research use only and not for use in diagnostic or therapeutic procedures.

**CLIC1 / NCC27 Antibody (clone 3F9) - Protein Information****Name** CLIC1**Synonyms** G6, NCC27**Function**

Can insert into membranes and form chloride ion channels. Channel activity depends on the pH. Membrane insertion seems to be redox-regulated and may occur only under oxydizing conditions. Involved in regulation of the cell cycle.

**Cellular Location**

Nucleus. Nucleus membrane; Single-pass membrane protein. Cytoplasm. Cell membrane; Single-pass membrane protein. Endoplasmic reticulum {ECO:0000250|UniProtKB:Q6MG61}. Note=Mostly in the nucleus including in the nuclear membrane (PubMed:9139710, PubMed:12681486). Small amount in the cytoplasm and the plasma membrane (PubMed:9139710). Exists both as soluble cytoplasmic protein and as membrane protein with probably a single transmembrane domain (PubMed:11940526, PubMed:11551966, PubMed:14613939, PubMed:12681486, PubMed:9139710). Might not be present in the nucleus of cardiac cells (By similarity) {ECO:0000250|UniProtKB:Q6MG61, ECO:0000269|PubMed:11551966,

ECO:0000269|PubMed:11940526, ECO:0000269|PubMed:12681486,  
ECO:0000269|PubMed:14613939, ECO:0000269|PubMed:9139710}

#### Tissue Location

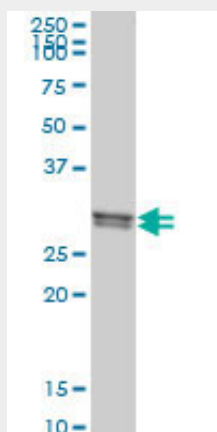
Expression is prominent in heart, placenta, liver, kidney and pancreas.

#### CLIC1 / NCC27 Antibody (clone 3F9) - Protocols

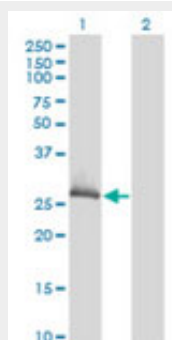
Provided below are standard protocols that you may find useful for product applications.

- [Western Blot](#)
- [Blocking Peptides](#)
- [Dot Blot](#)
- [Immunohistochemistry](#)
- [Immunofluorescence](#)
- [Immunoprecipitation](#)
- [Flow Cytometry](#)
- [Cell Culture](#)

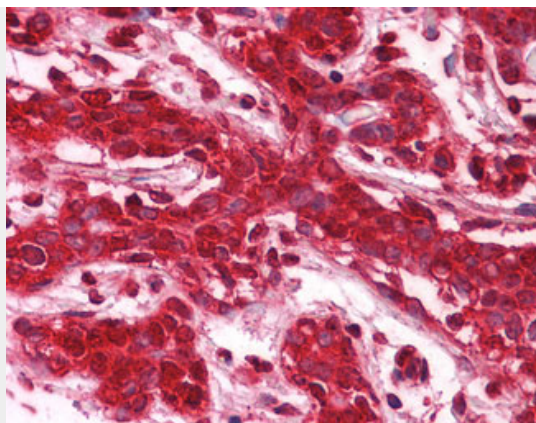
#### CLIC1 / NCC27 Antibody (clone 3F9) - Images



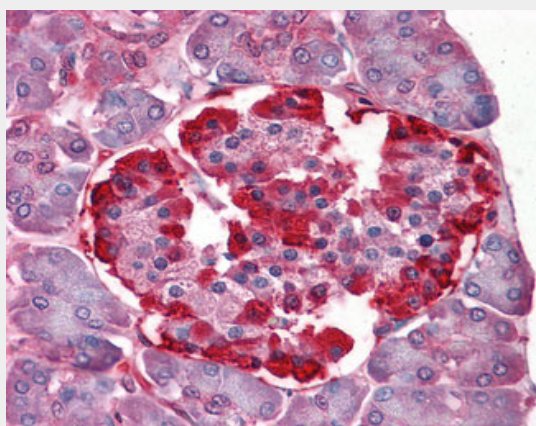
CLIC1 monoclonal antibody, clone 3F9 Western blot of CLIC1 expression in 293.



Western blot of CLIC1 expression in transfected 293T cell line by CLIC1 monoclonal antibody,...



Anti-CLIC1 antibody IHC of human breast.



Anti-CLIC1 antibody IHC of human pancreas.

#### **CLIC1 / NCC27 Antibody (clone 3F9) - Background**

Can insert into membranes and form chloride ion channels. Channel activity depends on the pH. Membrane insertion seems to be redox-regulated and may occur only under oxydizing conditions. Involved in regulation of the cell cycle.

#### **CLIC1 / NCC27 Antibody (clone 3F9) - References**

Valenzuela S.M.,et al.J. Biol. Chem. 272:12575-12582(1997).  
Noh Y.H.,et al.Submitted (NOV-1997) to the EMBL/GenBank/DDBJ databases.  
Chuang J.Z.,et al.J. Neurosci. 19:2919-2928(1999).  
Ribas G.,et al.J. Immunol. 163:278-287(1999).  
Halleck A.,et al.Submitted (JUN-2004) to the EMBL/GenBank/DDBJ databases.