

ELAVL1 / HUR Antibody (clone 4G8)
Mouse Monoclonal Antibody
Catalog # ALS13304**Specification**

ELAVL1 / HUR Antibody (clone 4G8) - Product Information

Application	WB, IF, IHC
Primary Accession	Q15717
Reactivity	Human
Host	Mouse
Clonality	Monoclonal
Calculated MW	36kDa KDa

ELAVL1 / HUR Antibody (clone 4G8) - Additional Information**Gene ID** 1994**Other Names**

ELAV-like protein 1, Hu-antigen R, HuR, ELAVL1, HUR

Reconstitution & Storage

Store at -20°C. Aliquot to avoid freeze/thaw cycles.

Precautions

ELAVL1 / HUR Antibody (clone 4G8) is for research use only and not for use in diagnostic or therapeutic procedures.

ELAVL1 / HUR Antibody (clone 4G8) - Protein Information**Name** ELAVL1**Synonyms** HUR**Function**

RNA-binding protein that binds to the 3'-UTR region of mRNAs and increases their stability (PubMed: [14517288](http://www.uniprot.org/citations/14517288), PubMed: [18285462](http://www.uniprot.org/citations/18285462), PubMed: [31358969](http://www.uniprot.org/citations/31358969)). Involved in embryonic stem cell (ESC) differentiation: preferentially binds mRNAs that are not methylated by N6-methyladenosine (m6A), stabilizing them, promoting ESC differentiation (By similarity). Has also been shown to be capable of binding to m6A-containing mRNAs and contributes to MYC stability by binding to m6A-containing MYC mRNAs (PubMed: [32245947](http://www.uniprot.org/citations/32245947)). Binds to poly-U elements and AU-rich elements (AREs) in the 3'-UTR of target mRNAs (PubMed: [8626503](http://www.uniprot.org/citations/8626503), PubMed: [17632515](http://www.uniprot.org/citations/17632515), PubMed: [18285462](http://www.uniprot.org/citations/18285462), PubMed: [23519412](http://www.uniprot.org/citations/23519412), PubMed: [23519412](http://www.uniprot.org/citations/23519412)).

href="http://www.uniprot.org/citations/14731398" target="_blank">14731398). Binds avidly to the AU-rich element in FOS and IL3/interleukin-3 mRNAs. In the case of the FOS AU-rich element, binds to a core element of 27 nucleotides that contain AUUUA, AUUUUA, and AUUUUUA motifs. Binds preferentially to the 5'-UUUU[AG]UUU-3' motif in vitro (PubMed:8626503). With ZNF385A, binds the 3'-UTR of p53/TP53 mRNA to control their nuclear export induced by CDKN2A. Hence, may regulate p53/TP53 expression and mediate in part the CDKN2A anti-proliferative activity. May also bind with ZNF385A the CCNB1 mRNA (By similarity). Increases the stability of the leptin mRNA harboring an AU-rich element (ARE) in its 3' UTR (PubMed:29180010).

Cellular Location

Cytoplasm. Nucleus. Cytoplasm, Stress granule {ECO:0000250|UniProtKB:P70372}. Cytoplasm, P-body. Note=Translocates into the cytoplasm following phosphorylation by MAPKAPK2 (PubMed:14517288). Likewise, phosphorylation by PRKCD promotes translocation from the nucleus into the cytoplasm, where it is associated with free and cytoskeleton-bound polysomes (PubMed:18285462).Localizes to the stress granules in the presence of PLEKHN1 (By similarity). {ECO:0000250|UniProtKB:P70372, ECO:0000269|PubMed:14517288, ECO:0000269|PubMed:18285462}

Tissue Location

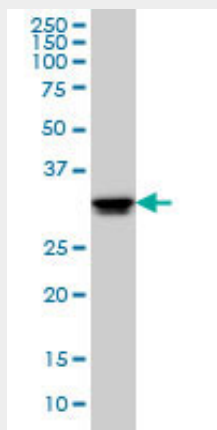
Ubiquitous. Detected in brain, liver, thymus and muscle.

ELAVL1 / HUR Antibody (clone 4G8) - Protocols

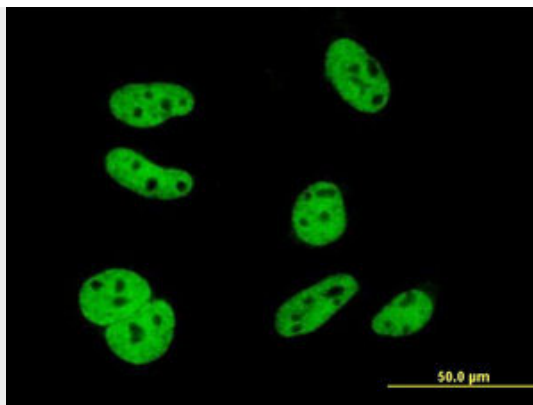
Provided below are standard protocols that you may find useful for product applications.

- [Western Blot](#)
- [Blocking Peptides](#)
- [Dot Blot](#)
- [Immunohistochemistry](#)
- [Immunofluorescence](#)
- [Immunoprecipitation](#)
- [Flow Cytometry](#)
- [Cell Culture](#)

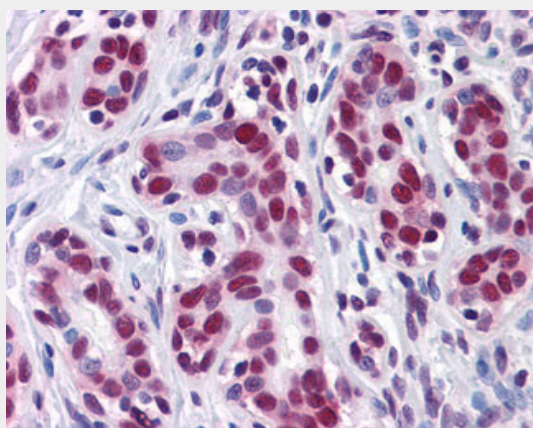
ELAVL1 / HUR Antibody (clone 4G8) - Images



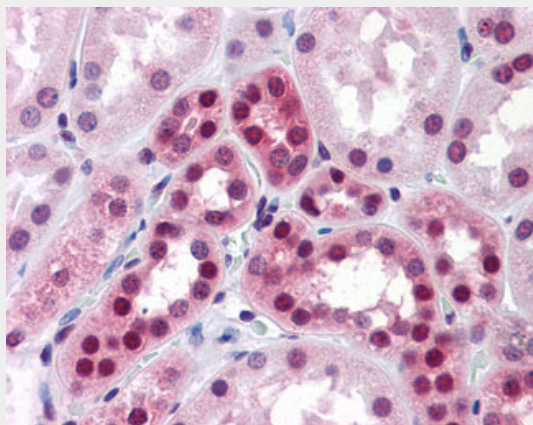
ELAVL1 monoclonal antibody clone 4G8 Western blot of ELAVL1 expression in HeLa.



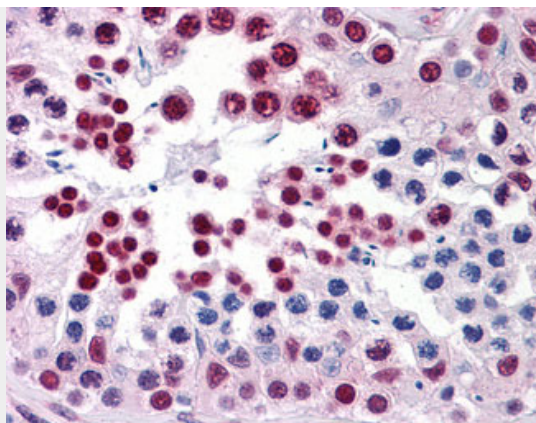
Immunofluorescence of monoclonal antibody to ELAVL1 on HeLa cell (antibody concentration 10 ug/ml).



Anti-HuR antibody IHC of human breast.



Anti-HuR antibody IHC of human kidney.



Anti-HuR antibody IHC of human testis.

ELAVL1 / HUR Antibody (clone 4G8) - Background

RNA-binding protein that binds to the 3'-UTR region of mRNAs and increases their stability. Involved in embryonic stem cells (ESCs) differentiation: preferentially binds mRNAs that are not methylated by N6-methyladenosine (m6A), stabilizing them, promoting ESCs differentiation. Binds to poly-U elements and AU- rich elements (AREs) in the 3'-UTR of target mRNAs. Binds avidly to the AU-rich element in FOS and IL3/interleukin-3 mRNAs. In the case of the FOS AU-rich element, binds to a core element of 27 nucleotides that contain AUUUA, AUUUUA, and AUUUUUA motifs. Binds preferentially to the 5'-UUUU[AG]UUU-3' motif in vitro. With ZNF385A, binds the 3'-UTR of p53/TP53 mRNA to control their nuclear export induced by CDKN2A. Hence, may regulate p53/TP53 expression and mediate in part the CDKN2A anti-proliferative activity. May also bind with ZNF385A the CCNB1 mRNA.

ELAVL1 / HUR Antibody (clone 4G8) - References

Ma W.-J.,et al.J. Biol. Chem. 271:8144-8151(1996).
Kalnine N.,et al.Submitted (AUG-2003) to the EMBL/GenBank/DDBJ databases.
Ota T.,et al.Nat. Genet. 36:40-45(2004).
Grimwood J.,et al.Nature 428:529-535(2004).
Mural R.J.,et al.Submitted (SEP-2005) to the EMBL/GenBank/DDBJ databases.