

**GPR3 Antibody (C-Terminus)**  
**Rabbit Polyclonal Antibody**  
**Catalog # ALS13310****Specification**

---

**GPR3 Antibody (C-Terminus) - Product Information**

Application	IF
Primary Accession	<a href="#">P46089</a>
Reactivity	Human, Mouse, Rat
Host	Rabbit
Clonality	Polyclonal
Calculated MW	35kDa KDa

**GPR3 Antibody (C-Terminus) - Additional Information****Gene ID** 2827**Other Names**

G-protein coupled receptor 3, ACCA orphan receptor, GPR3, ACCA

**Target/Specificity**

Human GPR3

**Reconstitution & Storage**

Short term 4°C, long term aliquot and store at -20°C, avoid freeze thaw cycles. Store undiluted.

**Precautions**

GPR3 Antibody (C-Terminus) is for research use only and not for use in diagnostic or therapeutic procedures.

**GPR3 Antibody (C-Terminus) - Protein Information****Name** GPR3**Synonyms** ACCA**Function**

Constitutively active G-protein coupled receptor that maintains high 3'-5'-cyclic adenosine monophosphate (cAMP) levels that plays a role in several processes including meiotic arrest in oocytes or neuronal development via activation of numerous intracellular signaling pathways. Acts as an essential activator of thermogenic adipocytes and drives thermogenesis via its intrinsic G(s)-coupling activity without the requirement of a ligand (PubMed: [34048700](http://www.uniprot.org/citations/34048700)). Has a potential role in modulating a number of brain functions, including behavioral responses to stress (By similarity), amyloid-beta peptide generation in neurons (By similarity). Stimulates neurite outgrowth in cerebellar granular neurons modulated via PKA, ERK, and most strongly PI3K-mediated signaling pathways (By similarity).

**Cellular Location**

Cell membrane; Multi-pass membrane protein.

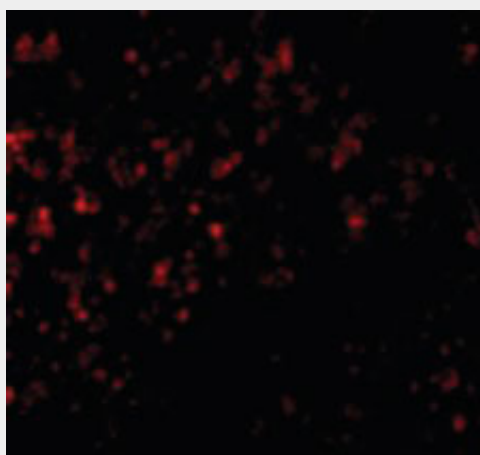
**Tissue Location**

Expressed predominantly in the central nervous system, and at low levels in the lung, kidney, testis, ovary and eye Highly expressed in regions of the brain implicated in the Alzheimer disease

**GPR3 Antibody (C-Terminus) - Protocols**

Provided below are standard protocols that you may find useful for product applications.

- [Western Blot](#)
- [Blocking Peptides](#)
- [Dot Blot](#)
- [Immunohistochemistry](#)
- [Immunofluorescence](#)
- [Immunoprecipitation](#)
- [Flow Cytometry](#)
- [Cell Culture](#)

**GPR3 Antibody (C-Terminus) - Images**

Immunofluorescence of GPR3 in Human Spleen cells with GPR3 antibody at 20 ug/ml.

**GPR3 Antibody (C-Terminus) - Background**

Orphan receptor with constitutive G(s) signaling activity that activate cyclic AMP. Has a potential role in modulating a number of brain functions, including behavioral responses to stress (By similarity), amyloid-beta peptide generation in neurons and neurite outgrowth (By similarity). Maintains also meiotic arrest in oocytes (By similarity).

**GPR3 Antibody (C-Terminus) - References**

Song Z.-H., et al. Genomics 28:347-349(1995).  
Iismaa T.P., et al. Genomics 24:391-394(1994).  
Eggerickx D., et al. Biochem. J. 309:837-843(1995).  
Ota T., et al. Nat. Genet. 36:40-45(2004).  
Gregory S.G., et al. Nature 441:315-321(2006).