

OASIS / CREB3L1 Antibody (C-Terminus)
Goat Polyclonal Antibody
Catalog # ALS13313**Specification**

OASIS / CREB3L1 Antibody (C-Terminus) - Product Information

Application	IHC, WB
Primary Accession	Q96BA8
Reactivity	Human, Monkey
Host	Goat
Clonality	Polyclonal
Calculated MW	57kDa KDa

OASIS / CREB3L1 Antibody (C-Terminus) - Additional Information**Gene ID** 90993**Other Names**

Cyclic AMP-responsive element-binding protein 3-like protein 1, cAMP-responsive element-binding protein 3-like protein 1, Old astrocyte specifically-induced substance, OASIS, Processed cyclic AMP-responsive element-binding protein 3-like protein 1, CREB3L1, OASIS

Target/Specificity

Human CREB3L1.

Reconstitution & Storage

Store at -20°C. Minimize freezing and thawing.

Precautions

OASIS / CREB3L1 Antibody (C-Terminus) is for research use only and not for use in diagnostic or therapeutic procedures.

OASIS / CREB3L1 Antibody (C-Terminus) - Protein Information**Name** CREB3L1 ([HGNC:18856](#))**Function**

[Cyclic AMP-responsive element-binding protein 3-like protein 1]: Precursor of the transcription factor form (Processed cyclic AMP- responsive element-binding protein 3-like protein 1), which is embedded in the endoplasmic reticulum membrane with N-terminal DNA-binding and transcription activation domains oriented toward the cytosolic face of the membrane (PubMed:12054625, PubMed:16417584, PubMed:25310401). In response to ER stress or DNA damage, transported to the Golgi, where it is cleaved in a site-specific manner by resident proteases S1P/MBTPS1 and S2P/MBTPS2. The released N-terminal cytosolic domain is translocated to the nucleus where it activates transcription of specific target genes involved in the cell-cycle progression inhibition (PubMed:<a href="http://www.uniprot.org/citations/12054625"

target="_blank">12054625, PubMed:21767813, PubMed:25310401).

Cellular Location

[Cyclic AMP-responsive element-binding protein 3- like protein 1]: Endoplasmic reticulum membrane; Single-pass type II membrane protein Note=ER membrane resident protein. Upon ER stress, translocated to the Golgi apparatus where it is cleaved. The cytosolic N-terminal fragment (processed cyclic AMP-responsive element-binding protein 3-like protein 1) is transported into the nucleus.

Tissue Location

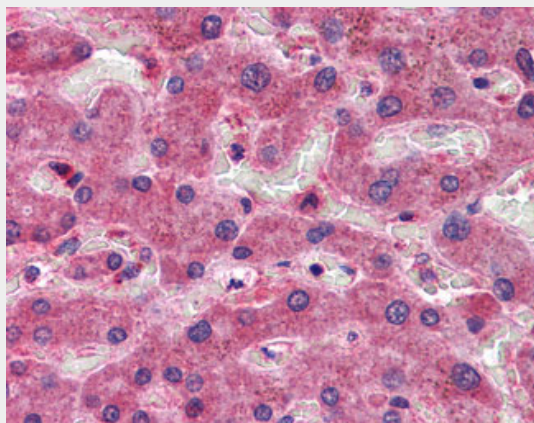
Expressed in several tissues, with highest levels in pancreas and prostate. Expressed at relatively lower levels in brain.

OASIS / CREB3L1 Antibody (C-Terminus) - Protocols

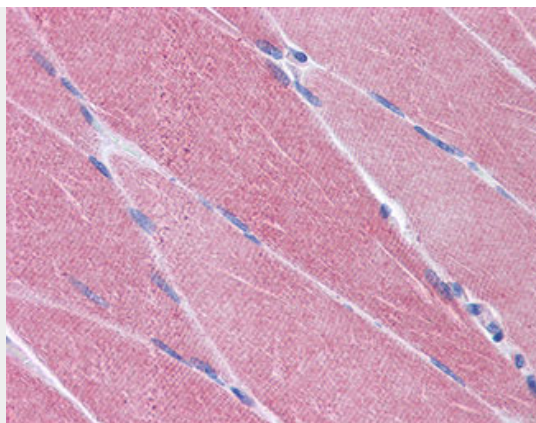
Provided below are standard protocols that you may find useful for product applications.

- [Western Blot](#)
- [Blocking Peptides](#)
- [Dot Blot](#)
- [Immunohistochemistry](#)
- [Immunofluorescence](#)
- [Immunoprecipitation](#)
- [Flow Cytometry](#)
- [Cell Culture](#)

OASIS / CREB3L1 Antibody (C-Terminus) - Images



Anti-CREB3L1 antibody IHC of human liver.



Anti-CREB3L1 antibody IHC of human skeletal muscle.



Approx.

OASIS / CREB3L1 Antibody (C-Terminus) - Background

Transcription factor that acts during endoplasmic reticulum stress by activating unfolded protein response target genes. Specifically involved in ER-stress response in astrocytes in the central nervous system (By similarity). May play a role in gliosis. In vitro, binds to box-B element, cAMP response element (CRE) and CRE-like sequences, and activates transcription through box-B element but not through CRE (By similarity).

OASIS / CREB3L1 Antibody (C-Terminus) - References

Omori Y.,et al.Biochem. Biophys. Res. Commun. 293:470-477(2002).
Ota T.,et al.Nat. Genet. 36:40-45(2004).
Murakami T.,et al.J. Neurochem. 96:1090-1100(2006).