

PREP / Prolyl Endopeptidase Antibody (Internal)
Goat Polyclonal Antibody
Catalog # ALS13317

Specification

PREP / Prolyl Endopeptidase Antibody (Internal) - Product Information

| | |
|-------------------|---|
| Application | IHC-P, E |
| Primary Accession | P48147 |
| Reactivity | Human, Mouse, Rat, Hamster, Monkey, Horse |
| Host | Goat |
| Clonality | Polyclonal |
| Calculated MW | 81kDa KDa |
| Dilution | IHC-P~~N/A E~~N/A |

PREP / Prolyl Endopeptidase Antibody (Internal) - Additional Information

Gene ID 5550

Other Names

Prolyl endopeptidase, PE, 3.4.21.26, Post-proline cleaving enzyme, PREP, PEP

Target/Specificity

Human PREP.

Reconstitution & Storage

Store at -20°C. Minimize freezing and thawing.

Precautions

PREP / Prolyl Endopeptidase Antibody (Internal) is for research use only and not for use in diagnostic or therapeutic procedures.

PREP / Prolyl Endopeptidase Antibody (Internal) - Protein Information

Name PREP

Synonyms PEP

Function

Cleaves peptide bonds on the C-terminal side of prolyl residues within peptides that are up to approximately 30 amino acids long.

Cellular Location

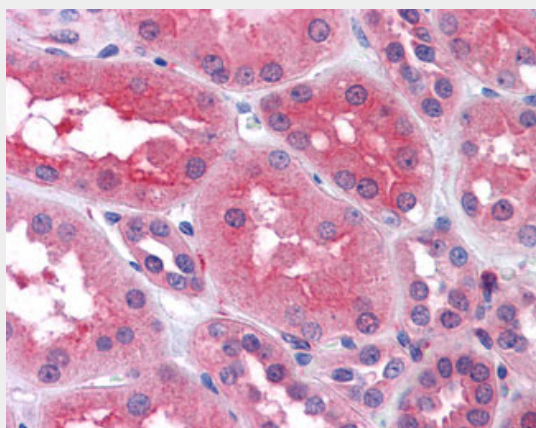
Cytoplasm.

PREP / Prolyl Endopeptidase Antibody (Internal) - Protocols

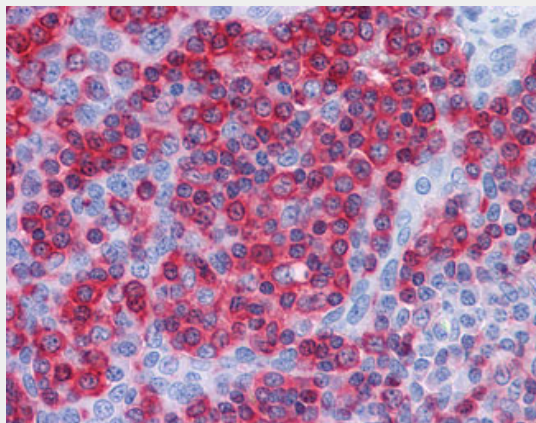
Provided below are standard protocols that you may find useful for product applications.

- [Western Blot](#)
- [Blocking Peptides](#)
- [Dot Blot](#)
- [Immunohistochemistry](#)
- [Immunofluorescence](#)
- [Immunoprecipitation](#)
- [Flow Cytometry](#)
- [Cell Culture](#)

PREP / Prolyl Endopeptidase Antibody (Internal) - Images



Anti-PREP antibody IHC of human kidney.



Anti-PREP antibody IHC of human tonsil.

PREP / Prolyl Endopeptidase Antibody (Internal) - Background

Cleaves peptide bonds on the C-terminal side of prolyl residues within peptides that are up to approximately 30 amino acids long.

PREP / Prolyl Endopeptidase Antibody (Internal) - References

- Vanhoof G., et al. Gene 149:363-366(1994).
Shirasawa Y., et al. J. Biochem. 115:724-729(1994).
Tarrago T., et al. Submitted (JUN-2004) to the EMBL/GenBank/DDBJ databases.

Mungall A.J., et al. Nature 425:805-811(2003).

Mural R.J., et al. Submitted (SEP-2005) to the EMBL/GenBank/DDBJ databases.