

**GPR3 Antibody (clone 3B4-G3)**  
**Mouse Monoclonal Antibody**  
**Catalog # ALS13322****Specification**

---

**GPR3 Antibody (clone 3B4-G3) - Product Information**

Application	WB
Primary Accession	<a href="#">P46089</a>
Reactivity	Human
Host	Mouse
Clonality	Monoclonal
Calculated MW	35kDa KDa

**GPR3 Antibody (clone 3B4-G3) - Additional Information****Gene ID** 2827**Other Names**

G-protein coupled receptor 3, ACCA orphan receptor, GPR3, ACCA

**Reconstitution & Storage**

Store at -20°C. Aliquot to avoid freeze/thaw cycles.

**Precautions**

GPR3 Antibody (clone 3B4-G3) is for research use only and not for use in diagnostic or therapeutic procedures.

**GPR3 Antibody (clone 3B4-G3) - Protein Information****Name** GPR3**Synonyms** ACCA**Function**

Constitutively active G-protein coupled receptor that maintains high 3'-5'-cyclic adenosine monophosphate (cAMP) levels that plays a role in several processes including meiotic arrest in oocytes or neuronal development via activation of numerous intracellular signaling pathways. Acts as an essential activator of thermogenic adipocytes and drives thermogenesis via its intrinsic G(s)-coupling activity without the requirement of a ligand (PubMed:<a href="http://www.uniprot.org/citations/34048700" target="\_blank">34048700</a>). Has a potential role in modulating a number of brain functions, including behavioral responses to stress (By similarity), amyloid-beta peptide generation in neurons (By similarity). Stimulates neurite outgrowth in cerebellar granular neurons modulated via PKA, ERK, and most strongly PI3K-mediated signaling pathways (By similarity).

**Cellular Location**

Cell membrane; Multi-pass membrane protein.

### Tissue Location

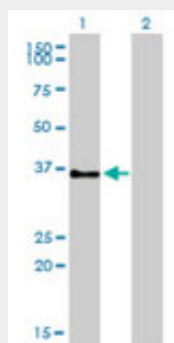
Expressed predominantly in the central nervous system, and at low levels in the lung, kidney, testis, ovary and eye Highly expressed in regions of the brain implicated in the Alzheimer disease

### GPR3 Antibody (clone 3B4-G3) - Protocols

Provided below are standard protocols that you may find useful for product applications.

- [Western Blot](#)
- [Blocking Peptides](#)
- [Dot Blot](#)
- [Immunohistochemistry](#)
- [Immunofluorescence](#)
- [Immunoprecipitation](#)
- [Flow Cytometry](#)
- [Cell Culture](#)

### GPR3 Antibody (clone 3B4-G3) - Images



Western blot of GPR3 expression in transfected 293T cell line by GPR3 monoclonal antibody clone...

### GPR3 Antibody (clone 3B4-G3) - Background

Orphan receptor with constitutive G(s) signaling activity that activate cyclic AMP. Has a potential role in modulating a number of brain functions, including behavioral responses to stress (By similarity), amyloid-beta peptide generation in neurons and neurite outgrowth (By similarity). Maintains also meiotic arrest in oocytes (By similarity).

### GPR3 Antibody (clone 3B4-G3) - References

Song Z.-H.,et al.Genomics 28:347-349(1995).  
Iismaa T.P.,et al.Genomics 24:391-394(1994).  
Eggerickx D.,et al.Biochem. J. 309:837-843(1995).  
Ota T.,et al.Nat. Genet. 36:40-45(2004).  
Gregory S.G.,et al.Nature 441:315-321(2006).