

IRF4 Antibody (clone 2F2)
Mouse Monoclonal Antibody
Catalog # ALS13347**Specification**

IRF4 Antibody (clone 2F2) - Product Information

Application	IHC
Primary Accession	Q15306
Reactivity	Human
Host	Mouse
Clonality	Monoclonal
Calculated MW	52kDa KDa

IRF4 Antibody (clone 2F2) - Additional Information**Gene ID** 3662**Other Names**

Interferon regulatory factor 4, IRF-4, Lymphocyte-specific interferon regulatory factor, LSIRF, Multiple myeloma oncogene 1, NF-EM5, IRF4, MUM1

Reconstitution & Storage

Store at -20°C. Aliquot to avoid freeze/thaw cycles.

Precautions

IRF4 Antibody (clone 2F2) is for research use only and not for use in diagnostic or therapeutic procedures.

IRF4 Antibody (clone 2F2) - Protein Information**Name** IRF4**Synonyms** MUM1**Function**

Transcriptional activator. Binds to the interferon-stimulated response element (ISRE) of the MHC class I promoter. Binds the immunoglobulin lambda light chain enhancer, together with PU.1. Probably plays a role in ISRE-targeted signal transduction mechanisms specific to lymphoid cells. Involved in CD8(+) dendritic cell differentiation by forming a complex with the BATF-JUNB heterodimer in immune cells, leading to recognition of AICE sequence (5'-TGAnTCA/GAAA- 3'), an immune-specific regulatory element, followed by cooperative binding of BATF and IRF4 and activation of genes (By similarity).

Cellular Location

Nucleus.

Tissue Location

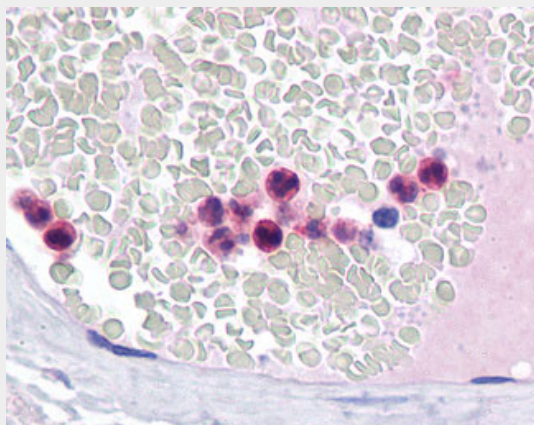
Lymphoid cells.

IRF4 Antibody (clone 2F2) - Protocols

Provided below are standard protocols that you may find useful for product applications.

- [Western Blot](#)
- [Blocking Peptides](#)
- [Dot Blot](#)
- [Immunohistochemistry](#)
- [Immunofluorescence](#)
- [Immunoprecipitation](#)
- [Flow Cytometry](#)
- [Cell Culture](#)

IRF4 Antibody (clone 2F2) - Images



Anti-IRF-4 antibody IHC of human neutrophils.

IRF4 Antibody (clone 2F2) - Background

Transcriptional activator. Binds to the interferon- stimulated response element (ISRE) of the MHC class I promoter. Binds the immunoglobulin lambda light chain enhancer, together with PU.1. Probably plays a role in ISRE-targeted signal transduction mechanisms specific to lymphoid cells. Involved in CD8(+) dendritic cell differentiation by forming a complex with the BATF-JUNB heterodimer in immune cells, leading to recognition of AICE sequence (5'-TGAnTCA/GAAA-3'), an immune-specific regulatory element, followed by cooperative binding of BATF and IRF4 and activation of genes (By similarity).

IRF4 Antibody (clone 2F2) - References

Grossman A.,et al.Genomics 37:229-233(1996).
Iida S.,et al.Nat. Genet. 17:226-230(1997).
Mungall A.J.,et al.Nature 425:805-811(2003).
Rao S.,et al.J. Biol. Chem. 274:11115-11124(1999).
Gupta S.,et al.Hum. Immunol. 64:389-401(2003).