

**KRT81 / Keratin 81 / KRTHB1 Antibody (clone 3B10-5B10)**  
**Mouse Monoclonal Antibody**  
**Catalog # ALS13350****Specification**

---

**KRT81 / Keratin 81 / KRTHB1 Antibody (clone 3B10-5B10) - Product Information**

Application	WB, IHC-P, IF, E
Primary Accession	<a href="#">Q14533</a>
Reactivity	Human
Host	Mouse
Clonality	Monoclonal
Calculated MW	55kDa KDa
Dilution	WB~~1:1000 IHC-P~~N/A IF~~1:50~200 E~~N/A

**KRT81 / Keratin 81 / KRTHB1 Antibody (clone 3B10-5B10) - Additional Information**

**Gene ID** 3887

**Other Names**

Keratin, type II cuticular Hb1, Hair keratin K2.9, Keratin, hair, basic, 1, Keratin-81, K81, Metastatic lymph node 137 gene protein, MLN 137, Type II hair keratin Hb1, Type-II keratin Kb21, ghHKb1, ghHb1, KRT81, KRTHB1, MLN137

**Reconstitution & Storage**

Store at -20°C. Aliquot to avoid freeze/thaw cycles.

**Precautions**

KRT81 / Keratin 81 / KRTHB1 Antibody (clone 3B10-5B10) is for research use only and not for use in diagnostic or therapeutic procedures.

**KRT81 / Keratin 81 / KRTHB1 Antibody (clone 3B10-5B10) - Protein Information**

**Name** KRT81

**Synonyms** KRTHB1, MLN137

**Tissue Location**

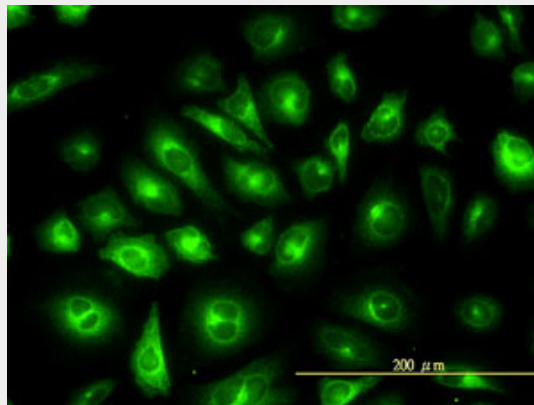
Abundantly expressed in the differentiating cortex of growing (anagen) hair. Expression is restricted to the keratinocytes of the hair cortex and is absent from inner root sheath and medulla. Expressed in malignant lymph node tissue in breast carcinoma tissue.

**KRT81 / Keratin 81 / KRTHB1 Antibody (clone 3B10-5B10) - Protocols**

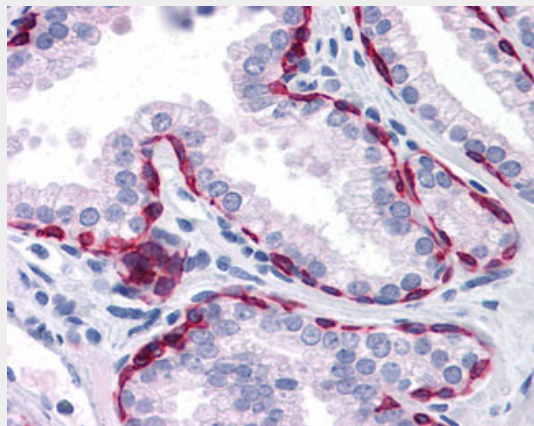
Provided below are standard protocols that you may find useful for product applications.

- [Western Blot](#)
- [Blocking Peptides](#)
- [Dot Blot](#)
- [Immunohistochemistry](#)
- [Immunofluorescence](#)
- [Immunoprecipitation](#)
- [Flow Cytometry](#)
- [Cell Culture](#)

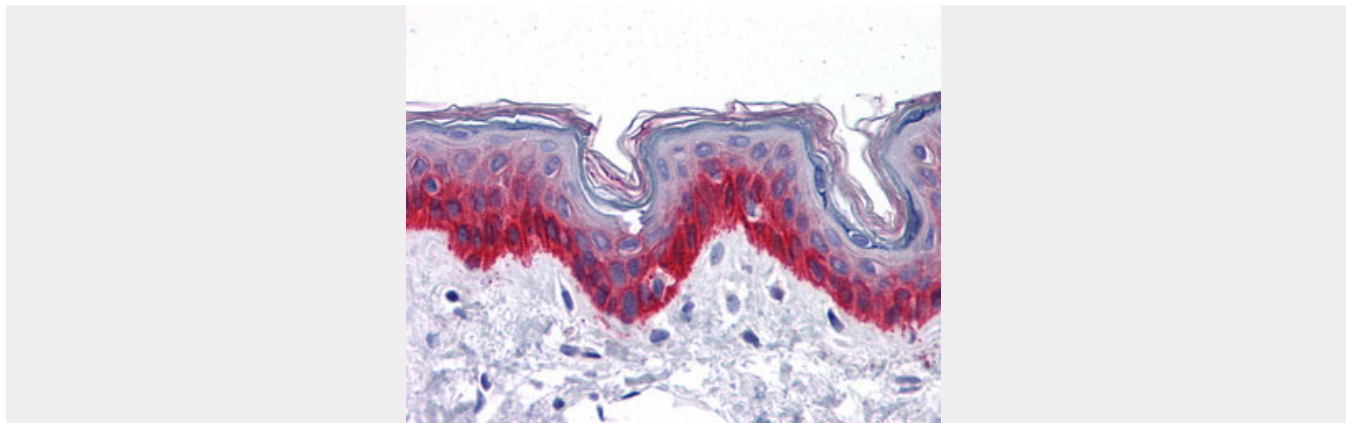
**KRT81 / Keratin 81 / KRTHB1 Antibody (clone 3B10-5B10) - Images**



Immunofluorescence of monoclonal antibody to KRTHB1 on HeLa cell (antibody concentration 10 ug/ml).



Anti-KRT81 antibody IHC of human prostate.



Anti-KRT81 antibody IHC of human skin.

#### **KRT81 / Keratin 81 / KRTHB1 Antibody (clone 3B10-5B10) - References**

- Bowden P.E.,et al.J. Invest. Dermatol. 110:158-164(1998).  
Scherer S.E.,et al.Nature 440:346-351(2006).  
Rogers M.A.,et al.Exp. Cell Res. 220:357-362(1995).  
Tomasetto C.L.,et al.Genomics 28:367-376(1995).  
Bowden P.E.,et al.J. Dermatol. Sci. 7:S152-S163(1994).