

SAFB1 / SAFB Antibody (clone 5A11)
Mouse Monoclonal Antibody
Catalog # ALS13390**Specification**

SAFB1 / SAFB Antibody (clone 5A11) - Product Information

Application	WB, IHC-P, IF, E
Primary Accession	Q15424
Reactivity	Human
Host	Mouse
Clonality	Monoclonal
Calculated MW	103kDa KDa
Dilution	WB~~1:1000 IHC-P~~N/A IF~~1:50~200 E~~N/A

SAFB1 / SAFB Antibody (clone 5A11) - Additional Information**Gene ID** 6294**Other Names**

Scaffold attachment factor B1, SAF-B, SAF-B1, HSP27 estrogen response element-TATA box-binding protein, HSP27 ERE-TATA-binding protein, SAFB, HAP, HET, SAFB1

Reconstitution & Storage

Store at -20°C. Aliquot to avoid freeze/thaw cycles.

Precautions

SAFB1 / SAFB Antibody (clone 5A11) is for research use only and not for use in diagnostic or therapeutic procedures.

SAFB1 / SAFB Antibody (clone 5A11) - Protein Information**Name** SAFB**Synonyms** HAP, HET, SAFB1**Function**

Binds to scaffold/matrix attachment region (S/MAR) DNA and forms a molecular assembly point to allow the formation of a 'transcriptosomal' complex (consisting of SR proteins and RNA polymerase II) coupling transcription and RNA processing (PubMed:9671816). Functions as an estrogen receptor corepressor and can also bind to the HSP27 promoter and decrease its transcription (PubMed:12660241). Thereby acts as a negative regulator of cell proliferation (PubMed:12660241). When associated with RBMX, binds to and stimulates transcription from the SREBF1 promoter (By

similarity).

Cellular Location

Nucleus

Tissue Location

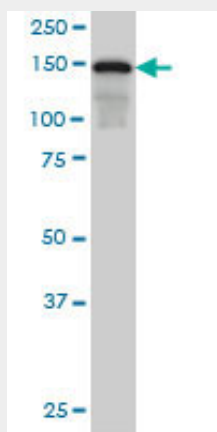
Ubiquitous. Expressed at high levels in the CNS and at low levels in the liver. Expressed in a wide number of breast cancer cell lines

SAFB1 / SAFB Antibody (clone 5A11) - Protocols

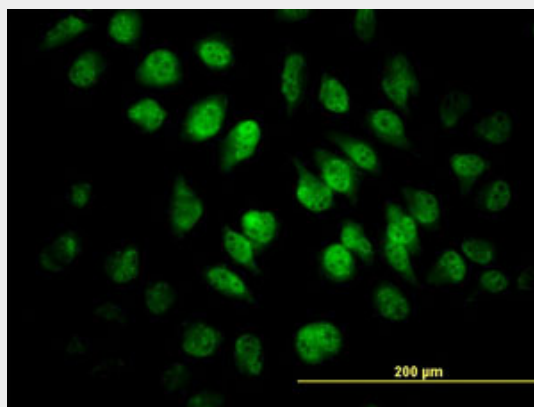
Provided below are standard protocols that you may find useful for product applications.

- [Western Blot](#)
- [Blocking Peptides](#)
- [Dot Blot](#)
- [Immunohistochemistry](#)
- [Immunofluorescence](#)
- [Immunoprecipitation](#)
- [Flow Cytometry](#)
- [Cell Culture](#)

SAFB1 / SAFB Antibody (clone 5A11) - Images

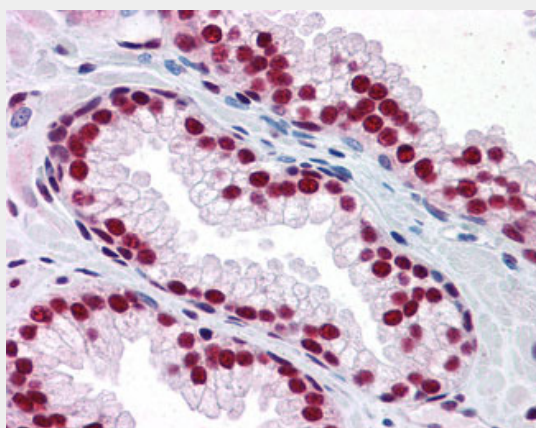


SAFB monoclonal antibody clone 5A11 Western blot of SAFB expression in HeLa NE.

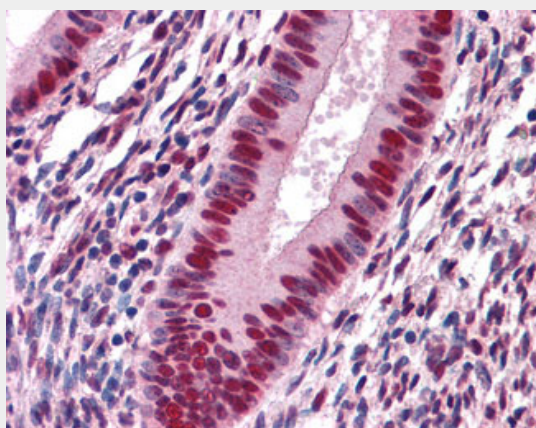


Immunofluorescence of monoclonal antibody to SAFB on HeLa cell (antibody concentration 10

ug/ml).



Anti-SAFB antibody IHC of human prostate.



Anti-SAFB antibody IHC of human uterus.

SAFB1 / SAFB Antibody (clone 5A11) - Background

Binds to scaffold/matrix attachment region (S/MAR) DNA and forms a molecular assembly point to allow the formation of a 'transcriptosomal' complex (consisting of SR proteins and RNA polymerase II) coupling transcription and RNA processing (By similarity). Can function as an estrogen receptor corepressor and can also bind to the HSP27 promoter and decrease its transcription. When associated with RBMX, binds to and stimulates transcription from the SREBF1 promoter (By similarity). Can inhibit cell proliferation.

SAFB1 / SAFB Antibody (clone 5A11) - References

- Oesterreich S.,et al.J. Cell. Biochem. 67:275-286(1997).
Ota T.,et al.Nat. Genet. 36:40-45(2004).
Grimwood J.,et al.Nature 428:529-535(2004).
Totoki Y.,et al.Submitted (MAR-2005) to the EMBL/GenBank/DDBJ databases.
Bienvenut W.V.,et al.Submitted (JUL-2009) to UniProtKB.