

TLN1 / Talin Antibody (clone 1A11)
Mouse Monoclonal Antibody
Catalog # ALS13405**Specification**

TLN1 / Talin Antibody (clone 1A11) - Product Information

Application	WB, IHC
Primary Accession	O9Y490
Reactivity	Human, Mouse, Rat
Host	Mouse
Clonality	Monoclonal
Calculated MW	270kDa KDa

TLN1 / Talin Antibody (clone 1A11) - Additional Information**Gene ID** 7094**Other Names**

Talin-1, TLN1, KIAA1027, TLN

Reconstitution & Storage

Store at -20°C. Aliquot to avoid freeze/thaw cycles.

Precautions

TLN1 / Talin Antibody (clone 1A11) is for research use only and not for use in diagnostic or therapeutic procedures.

TLN1 / Talin Antibody (clone 1A11) - Protein Information**Name** TLN1**Synonyms** KIAA1027, TLN**Function**

High molecular weight cytoskeletal protein concentrated at regions of cell-substratum contact and, in lymphocytes, at cell-cell contacts (By similarity). Involved in connections of major cytoskeletal structures to the plasma membrane (By similarity).

Cellular Location

Cell projection, ruffle membrane; Peripheral membrane protein; Cytoplasmic side. Cytoplasm, cytoskeleton. Cell surface {ECO:0000250|UniProtKB:P26039}. Cell junction, focal adhesion {ECO:0000250|UniProtKB:P26039}. Note=Colocalizes with LAYN at the membrane ruffles. Localized preferentially in focal adhesions than fibrillar adhesions (By similarity).

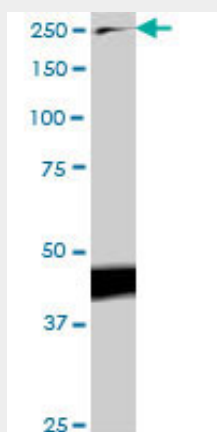
Tissue Location

[Isoform 2]: Expressed at low to non-detectable levels in many tissues but highly expressed in skin and pancreas with other tissues including kidney cortex, endocervix, testis, pituitary, liver, and spleen also showing robust expression

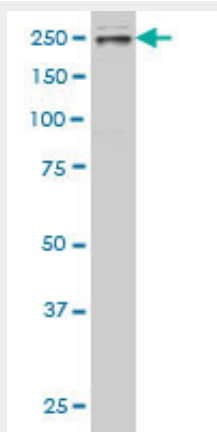
TLN1 / Talin Antibody (clone 1A11) - Protocols

Provided below are standard protocols that you may find useful for product applications.

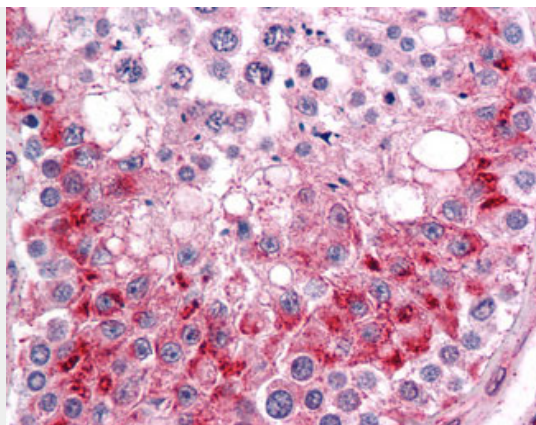
- [Western Blot](#)
- [Blocking Peptides](#)
- [Dot Blot](#)
- [Immunohistochemistry](#)
- [Immunofluorescence](#)
- [Immunoprecipitation](#)
- [Flow Cytometry](#)
- [Cell Culture](#)

TLN1 / Talin Antibody (clone 1A11) - Images

TLN1 monoclonal antibody clone 1A11. Western blot of TLN1 expression in PC-12.



TLN1 monoclonal antibody clone 1A11. Western blot of TLN1 expression in Raw 264.7.



Anti-TLN1 / Talin antibody IHC of human testis.

TLN1 / Talin Antibody (clone 1A11) - Background

Probably involved in connections of major cytoskeletal structures to the plasma membrane. High molecular weight cytoskeletal protein concentrated at regions of cell-substratum contact and, in lymphocytes, at cell-cell contacts (By similarity).

TLN1 / Talin Antibody (clone 1A11) - References

Mao L.,et al.Submitted (JUL-1998) to the EMBL/GenBank/DDBJ databases.
Ben-Yosef T.,et al.Genomics 62:316-319(1999).
Kikuno R.,et al.DNA Res. 6:197-205(1999).
Nakajima D.,et al.DNA Res. 9:99-106(2002).
Humphray S.J.,et al.Nature 429:369-374(2004).