

**CD32B Antibody (C-Terminus)**  
**Goat Polyclonal Antibody**  
**Catalog # ALS13425**

**Specification**

---

**CD32B Antibody (C-Terminus) - Product Information**

Application	<b>WB, IHC-P, E</b>
Primary Accession	<a href="#">P31994</a>
Reactivity	<b>Human</b>
Host	<b>Goat</b>
Clonality	<b>Polyclonal</b>
Calculated MW	<b>34kDa KDa</b>
Dilution	<b>WB~~1:1000</b> <b>IHC-P~~N/A</b> <b>E~~N/A</b>

**CD32B Antibody (C-Terminus) - Additional Information**

**Gene ID** 2213

**Other Names**

Low affinity immunoglobulin gamma Fc region receptor II-b, IgG Fc receptor II-b, CDw32, Fc-gamma RII-b, Fc-gamma-RIIb, FcRII-b, CD32, FCGR2B, CD32, FCG2, IGFR2

**Target/Specificity**

Human FCGR2B / CD32B. This antibody is expected to recognise all reported isoforms (NP\_001002273.1; NP\_001002274.1; NP\_001002275.1; NP\_003992.3; NP\_001177757.1).

**Reconstitution & Storage**

Short term 4°C, long term aliquot and store at -20°C, avoid freeze thaw cycles.

**Precautions**

CD32B Antibody (C-Terminus) is for research use only and not for use in diagnostic or therapeutic procedures.

**CD32B Antibody (C-Terminus) - Protein Information**

**Name** FCGR2B

**Synonyms** CD32, FCG2, IGFR2

**Function**

Receptor for the Fc region of complexed or aggregated immunoglobulins gamma. Low affinity receptor. Involved in a variety of effector and regulatory functions such as phagocytosis of immune complexes and modulation of antibody production by B-cells. Binding to this receptor results in down-modulation of previous state of cell activation triggered via antigen receptors on B-cells (BCR), T-cells (TCR) or via another Fc receptor. Isoform IIB1 fails to mediate endocytosis or phagocytosis. Isoform IIB2 does not trigger phagocytosis.

### Cellular Location

Cell membrane; Single-pass type I membrane protein

### Tissue Location

Is the most broadly distributed Fc-gamma-receptor. Expressed in monocyte, neutrophils, macrophages, basophils, eosinophils, Langerhans cells, B-cells, platelets cells and placenta (endothelial cells). Not detected in natural killer cells

### CD32B Antibody (C-Terminus) - Protocols

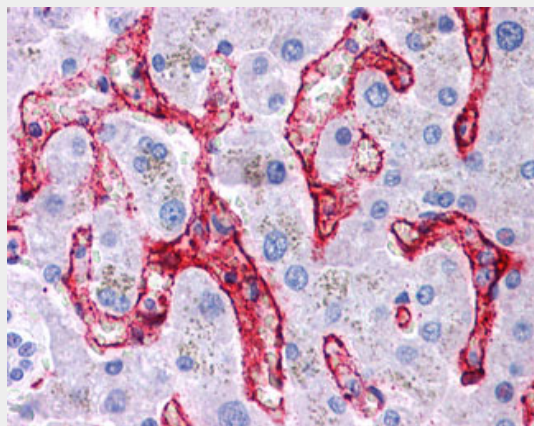
Provided below are standard protocols that you may find useful for product applications.

- [Western Blot](#)
- [Blocking Peptides](#)
- [Dot Blot](#)
- [Immunohistochemistry](#)
- [Immunofluorescence](#)
- [Immunoprecipitation](#)
- [Flow Cytometry](#)
- [Cell Culture](#)

### CD32B Antibody (C-Terminus) - Images



Antibody (0.3 ug/ml) staining of K562 lysate (35 ug protein in RIPA buffer).



Anti-CD32B antibody IHC of human liver.

### **CD32B Antibody (C-Terminus) - Background**

Receptor for the Fc region of complexed or aggregated immunoglobulins gamma. Low affinity receptor. Involved in a variety of effector and regulatory functions such as phagocytosis of immune complexes and modulation of antibody production by B- cells. Binding to this receptor results in down-modulation of previous state of cell activation triggered via antigen receptors on B-cells (BCR), T-cells (TCR) or via another Fc receptor. Isoform IIB1 fails to mediate endocytosis or phagocytosis. Isoform IIB2 does not trigger phagocytosis.

### **CD32B Antibody (C-Terminus) - References**

Ng S.,et al.Submitted (JAN-1997) to the EMBL/GenBank/DDBJ databases.  
Stuart S.G.,et al.EMBO J. 8:3657-3666(1989).  
Brooks D.G.,et al.J. Exp. Med. 170:1369-1385(1989).  
Engelhardt W.,et al.Eur. J. Immunol. 20:1367-1377(1990).  
Ebert L.,et al.Submitted (MAY-2004) to the EMBL/GenBank/DDBJ databases.