

SUPT16H / FACTP140 Antibody (Internal)
Goat Polyclonal Antibody
Catalog # ALS13428**Specification**

SUPT16H / FACTP140 Antibody (Internal) - Product Information

Application	WB, IHC
Primary Accession	Q9Y5B9
Reactivity	Human, Mouse, Rat, Hamster, Monkey, Pig, Goat, Bovine, Dog
Host	Goat
Clonality	Polyclonal
Calculated MW	120kDa KDa

SUPT16H / FACTP140 Antibody (Internal) - Additional Information**Gene ID** 11198**Other Names**

FACT complex subunit SPT16, Chromatin-specific transcription elongation factor 140 kDa subunit, FACT 140 kDa subunit, FACTp140, Facilitates chromatin transcription complex subunit SPT16, hSPT16, SUPT16H, FACT140, FACTP140

Target/Specificity

Human SUPT16H.

Reconstitution & Storage

Store at -20°C. Minimize freezing and thawing.

Precautions

SUPT16H / FACTP140 Antibody (Internal) is for research use only and not for use in diagnostic or therapeutic procedures.

SUPT16H / FACTP140 Antibody (Internal) - Protein Information**Name** SUPT16H**Synonyms** FACT140, FACTP140**Function**

Component of the FACT complex, a general chromatin factor that acts to reorganize nucleosomes. The FACT complex is involved in multiple processes that require DNA as a template such as mRNA elongation, DNA replication and DNA repair. During transcription elongation the FACT complex acts as a histone chaperone that both destabilizes and restores nucleosomal structure. It facilitates the passage of RNA polymerase II and transcription by promoting the dissociation of one histone H2A-H2B dimer from the nucleosome, then subsequently promotes the reestablishment of the nucleosome following the passage of RNA polymerase II. The FACT complex is probably also involved in phosphorylation of 'Ser-392' of p53/TP53 via its association with CK2 (casein kinase II).

Cellular Location

Nucleus. Chromosome. Note=Colocalizes with RNA polymerase II on chromatin. Recruited to actively transcribed loci

Tissue Location

Ubiquitous..

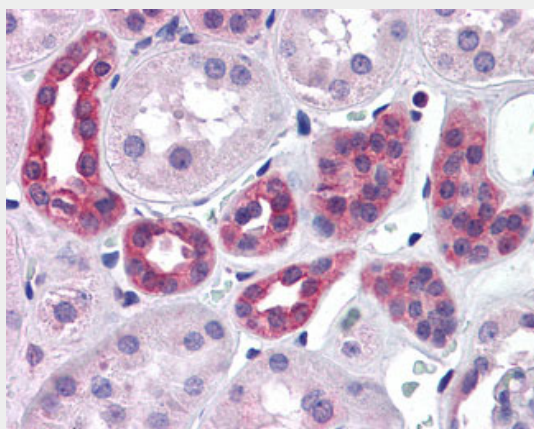
SUPT16H / FACTP140 Antibody (Internal) - Protocols

Provided below are standard protocols that you may find useful for product applications.

- [Western Blot](#)
- [Blocking Peptides](#)
- [Dot Blot](#)
- [Immunohistochemistry](#)
- [Immunofluorescence](#)
- [Immunoprecipitation](#)
- [Flow Cytometry](#)
- [Cell Culture](#)

SUPT16H / FACTP140 Antibody (Internal) - Images

Antibody (0.1 ug/ml) staining of HeLa cell lysate (35 ug protein in RIPA buffer).



Anti-SUPT16H antibody IHC of human kidney.

SUPT16H / FACTP140 Antibody (Internal) - Background

Component of the FACT complex, a general chromatin factor that acts to reorganize nucleosomes. The FACT complex is involved in multiple processes that require DNA as a template such as mRNA elongation, DNA replication and DNA repair. During transcription elongation the FACT complex acts as a histone chaperone that both destabilizes and restores nucleosomal structure. It facilitates the passage of RNA polymerase II and transcription by promoting the dissociation of one histone H2A-H2B dimer from the nucleosome, then subsequently promotes the reestablishment of the nucleosome following the passage of RNA polymerase II. The FACT complex is probably also involved in phosphorylation of 'Ser-392' of p53/TP53 via its association with CK2 (casein kinase II). Also involved in vitamin D-coupled transcription regulation via its association with the WINAC complex, a chromatin-remodeling complex recruited by vitamin D receptor (VDR), which is required for the ligand-bound VDR- mediated transrepression of the CYP27B1 gene.

SUPT16H / FACTP140 Antibody (Internal) - References

Orphanides G.,et al.Nature 400:284-288(1999).
Bienvenut W.V.,et al.Submitted (JUL-2007) to UniProtKB.
Bienvenut W.V.,et al.Submitted (MAR-2008) to UniProtKB.
Kang S.-W.,et al.Genes Cells 5:251-263(2000).
Orphanides G.,et al.Cell 92:105-116(1998).