

**KHSRP / KSRP Antibody (clone 4C10)**  
**Mouse Monoclonal Antibody**  
**Catalog # ALS13443****Specification**

---

**KHSRP / KSRP Antibody (clone 4C10) - Product Information**

|                   |                                    |
|-------------------|------------------------------------|
| Application       | WB, IHC-P, E                       |
| Primary Accession | <a href="#">O92945</a>             |
| Reactivity        | Human                              |
| Host              | Mouse                              |
| Clonality         | Monoclonal                         |
| Calculated MW     | 73kDa KDa                          |
| Dilution          | WB~~1:1000<br>IHC-P~~N/A<br>E~~N/A |

**KHSRP / KSRP Antibody (clone 4C10) - Additional Information****Gene ID** 8570**Other Names**

Far upstream element-binding protein 2, FUSE-binding protein 2, KH type-splicing regulatory protein, KSRP, p75, KHSRP, FUBP2

**Reconstitution & Storage**

Store at -20°C. Aliquot to avoid freeze/thaw cycles.

**Precautions**

KHSRP / KSRP Antibody (clone 4C10) is for research use only and not for use in diagnostic or therapeutic procedures.

**KHSRP / KSRP Antibody (clone 4C10) - Protein Information****Name** KHSRP**Synonyms** FUBP2**Function**

Binds to the dendritic targeting element and may play a role in mRNA trafficking (By similarity). Part of a ternary complex that binds to the downstream control sequence (DCS) of the pre-mRNA. Mediates exon inclusion in transcripts that are subject to tissue- specific alternative splicing. May interact with single-stranded DNA from the far-upstream element (FUSE). May activate gene expression. Also involved in degradation of inherently unstable mRNAs that contain AU-rich elements (AREs) in their 3'-UTR, possibly by recruiting degradation machinery to ARE-containing mRNAs.

**Cellular Location**

Nucleus. Cytoplasm. Note=A small proportion is also found in the cytoplasm of neuronal cell

bodies and dendrites.

#### **Tissue Location**

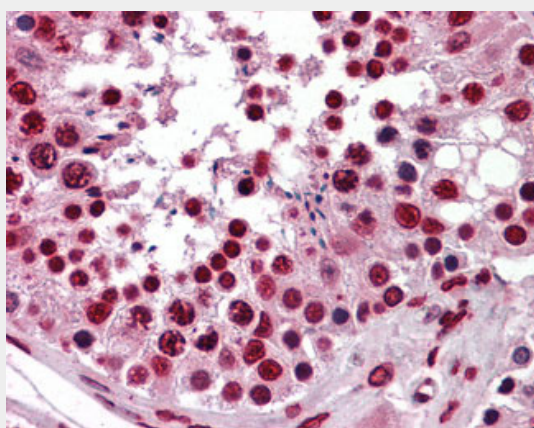
Detected in neural and non-neural cell lines.

#### **KHSRP / KSRP Antibody (clone 4C10) - Protocols**

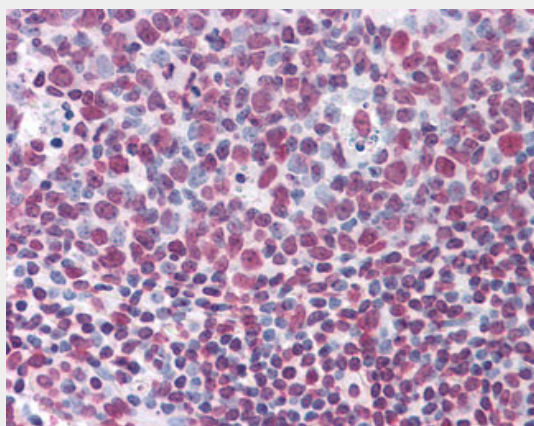
Provided below are standard protocols that you may find useful for product applications.

- [Western Blot](#)
- [Blocking Peptides](#)
- [Dot Blot](#)
- [Immunohistochemistry](#)
- [Immunofluorescence](#)
- [Immunoprecipitation](#)
- [Flow Cytometry](#)
- [Cell Culture](#)

#### **KHSRP / KSRP Antibody (clone 4C10) - Images**



Anti-KHSRP antibody IHC of human testis.



Anti-KHSRP antibody IHC of human tonsil.

#### **KHSRP / KSRP Antibody (clone 4C10) - Background**

Binds to the dendritic targeting element and may play a role in mRNA trafficking (By similarity).

Part of a ternary complex that binds to the downstream control sequence (DCS) of the pre-mRNA. Mediates exon inclusion in transcripts that are subject to tissue-specific alternative splicing. May interact with single- stranded DNA from the far-upstream element (FUSE). May activate gene expression. Also involved in degradation of inherently unstable mRNAs that contain AU-rich elements (AREs) in their 3'- UTR, possibly by recruiting degradation machinery to ARE- containing mRNAs.

**KHSRP / KSRP Antibody (clone 4C10) - References**

Min H.,et al.Genes Dev. 11:1023-1036(1997).  
Grimwood J.,et al.Nature 428:529-535(2004).  
Ring H.Z.,et al.Genomics 56:350-352(1999).  
Davis-Smyth T.,et al.J. Biol. Chem. 271:31679-31687(1996).  
Lubec G.,et al.Submitted (DEC-2008) to UniProtKB.