

**STK16 Antibody (clone M2)**  
**Mouse Monoclonal Antibody**  
**Catalog # ALS13444****Specification**

---

**STK16 Antibody (clone M2) - Product Information**

Application	WB, IHC
Primary Accession	<a href="#">O75716</a>
Reactivity	Human
Host	Mouse
Clonality	Monoclonal
Calculated MW	35kDa KDa

**STK16 Antibody (clone M2) - Additional Information****Gene ID** 8576**Other Names**

Serine/threonine-protein kinase 16, 2.7.11.1, Myristoylated and palmitoylated serine/threonine-protein kinase, MPSK, Protein kinase PKL12, TGF-beta-stimulated factor 1, TSF-1, Tyrosine-protein kinase STK16, 2.7.10.2, hPSK, STK16, MPSK1, PKL12, TSF1

**Reconstitution & Storage**

Store at -20°C. Aliquot to avoid freeze/thaw cycles.

**Precautions**

STK16 Antibody (clone M2) is for research use only and not for use in diagnostic or therapeutic procedures.

**STK16 Antibody (clone M2) - Protein Information****Name** STK16**Synonyms** MPSK1, PKL12, TSF1**Function**

Membrane-associated protein kinase that phosphorylates on serine and threonine residues. In vitro substrates include DRG1, ENO1 and EIF4EBP1. Also autophosphorylates. May be involved in secretory vesicle trafficking or intracellular signaling. May have a role in regulating stromal-epithelial interactions that occur during ductal morphogenesis in the mammary gland. May be involved in TGF-beta signaling. Able to autophosphorylate on Tyr residue; it is however unclear whether it has tyrosine-protein kinase toward other proteins.

**Cellular Location**

Cytoplasm, perinuclear region. Membrane; Lipid-anchor. Note=Associates with Golgi and Golgi-derived vesicles.

**Tissue Location**

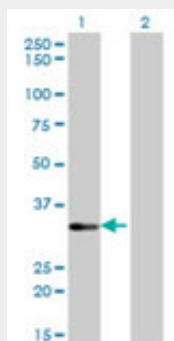
Ubiquitously expressed at very low levels.

### STK16 Antibody (clone M2) - Protocols

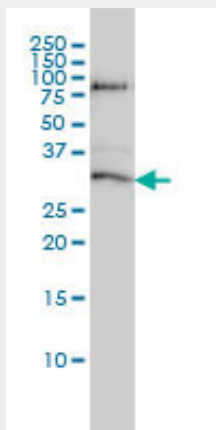
Provided below are standard protocols that you may find useful for product applications.

- [Western Blot](#)
- [Blocking Peptides](#)
- [Dot Blot](#)
- [Immunohistochemistry](#)
- [Immunofluorescence](#)
- [Immunoprecipitation](#)
- [Flow Cytometry](#)
- [Cell Culture](#)

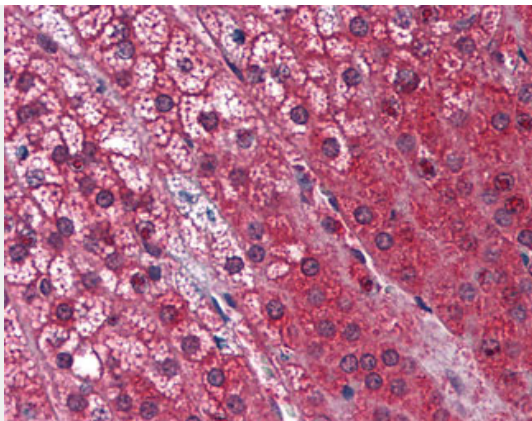
### STK16 Antibody (clone M2) - Images



Western blot of STK16 expression in transfected 293T cell line by STK16 monoclonal antibody,...



STK16 monoclonal antibody, clone M2 Western blot of STK16 expression in A-431.



Anti-STK16 antibody IHC of human adrenal.

### **STK16 Antibody (clone M2) - Background**

Membrane-associated protein kinase that phosphorylates on serine and threonine residues. In vitro substrates include DRG1, ENO1 and EIF4EBP1. Also autophosphorylates. May be involved in secretory vesicle trafficking or intracellular signaling. May have a role in regulating stromal-epithelial interactions that occur during ductal morphogenesis in the mammary gland. May be involved in TGF-beta signaling. Able to autophosphorylate on Tyr residue; it is however unclear whether it has tyrosine-protein kinase toward other proteins.

### **STK16 Antibody (clone M2) - References**

Ligos J.M., et al. Biochem. Biophys. Res. Commun. 249:380-384(1998).  
Berson A.E., et al. Biochem. Biophys. Res. Commun. 259:533-538(1999).  
Ohta S., et al. Biochem. J. 350:395-404(2000).  
Wabakken T.K., et al. Submitted (NOV-1998) to the EMBL/GenBank/DDBJ databases.  
Stairs D.B., et al. Submitted (NOV-1999) to the EMBL/GenBank/DDBJ databases.