

**RBM5 / G15 Antibody (clone 2B6)**  
**Mouse Monoclonal Antibody**  
**Catalog # ALS13460****Specification**

---

**RBM5 / G15 Antibody (clone 2B6) - Product Information**

Application	IHC
Primary Accession	<a href="#">P52756</a>
Reactivity	Human
Host	Mouse
Clonality	Monoclonal
Calculated MW	92kDa kDa

**RBM5 / G15 Antibody (clone 2B6) - Additional Information****Gene ID** 10181**Other Names**

RNA-binding protein 5, Protein G15, Putative tumor suppressor LUCA15, RNA-binding motif protein 5, Renal carcinoma antigen NY-REN-9, RBM5

**Reconstitution & Storage**

Store at -20°C. Aliquot to avoid freeze/thaw cycles.

**Precautions**

RBM5 / G15 Antibody (clone 2B6) is for research use only and not for use in diagnostic or therapeutic procedures.

**RBM5 / G15 Antibody (clone 2B6) - Protein Information****Name** RBM5**Function**

Component of the spliceosome A complex. Regulates alternative splicing of a number of mRNAs. May modulate splice site pairing after recruitment of the U1 and U2 snRNPs to the 5' and 3' splice sites of the intron. May both positively and negatively regulate apoptosis by regulating the alternative splicing of several genes involved in this process, including FAS and CASP2/caspase-2. In the case of FAS, promotes exclusion of exon 6 thereby producing a soluble form of FAS that inhibits apoptosis. In the case of CASP2/caspase-2, promotes exclusion of exon 9 thereby producing a catalytically active form of CASP2/Caspase-2 that induces apoptosis.

**Cellular Location**

Nucleus.

**Tissue Location**

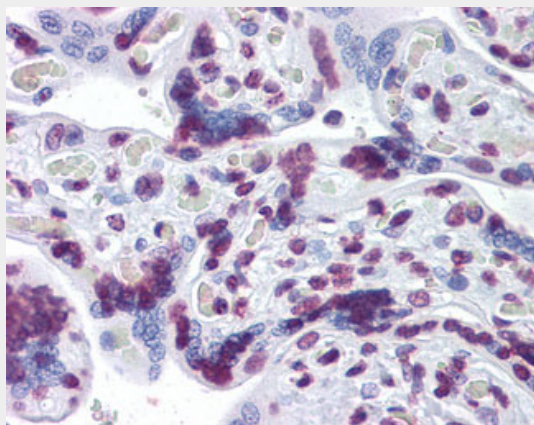
Isoform 5 is widely expressed in normal tissues and is expressed at increased levels in T-leukemic cell lines

## **RBM5 / G15 Antibody (clone 2B6) - Protocols**

Provided below are standard protocols that you may find useful for product applications.

- [Western Blot](#)
- [Blocking Peptides](#)
- [Dot Blot](#)
- [Immunohistochemistry](#)
- [Immunofluorescence](#)
- [Immunoprecipitation](#)
- [Flow Cytometry](#)
- [Cell Culture](#)

## **RBM5 / G15 Antibody (clone 2B6) - Images**



Anti-RBM5 antibody IHC of human placenta.

## **RBM5 / G15 Antibody (clone 2B6) - Background**

Component of the spliceosome A complex. Regulates alternative splicing of a number of mRNAs. May modulate splice site pairing after recruitment of the U1 and U2 snRNPs to the 5' and 3' splice sites of the intron. May both positively and negatively regulate apoptosis by regulating the alternative splicing of several genes involved in this process, including FAS and CASP2/caspase-2. In the case of FAS, promotes exclusion of exon 6 thereby producing a soluble form of FAS that inhibits apoptosis. In the case of CASP2/caspase-2, promotes exclusion of exon 9 thereby producing a catalytically active form of CASP2/Caspase-2 that induces apoptosis.

## **RBM5 / G15 Antibody (clone 2B6) - References**

Bader S., et al. Submitted (APR-1996) to the EMBL/GenBank/DDBJ databases.  
Timmer T., et al. Genomics 60:238-240(1999).  
Oh J.J., et al. Nucleic Acids Res. 27:4008-4017(1999).  
Oh J.J., et al. Submitted (APR-2001) to the EMBL/GenBank/DDBJ databases.  
Sutherland L.C., et al. Oncogene 19:3774-3781(2000).